



Abbeyfield House Heywoods Road, Teignmouth

Teignmouth

Guide Price £125,000

Abbeyfield House Heywoods Road, Teignmouth

A one bedroom apartment finished to a high specification throughout. Living accommodation comprising a generous size open plan living, kitchen/ dining area. A bright welcoming space offering blank canvas decor with a modern twist. White gloss kitchen with integrated appliances and generous storage space. Wood effect flooring throughout. Four large upvc windows. Large bedroom including en-suite shower with under floor heating . This immaculate property has a welcoming communal entrance hallway with lift access and storage facility/electrical charging point. The external area offers well maintained communal gardens and parking facility. Full details of the luxury Abbeyfield complex will be provided by Nexmove. Council Tax band: A

Tenure: Leasehold

EPC Energy Efficiency Rating: C

EPC Environmental Impact Rating: G





Communal Entrance

A well maintained communal entrance with lift access to all areas and prior to the entrance is a lockable storage room with charging point for electric scooter and a residents tumble dryer. There is also WC on this level.

Hallway

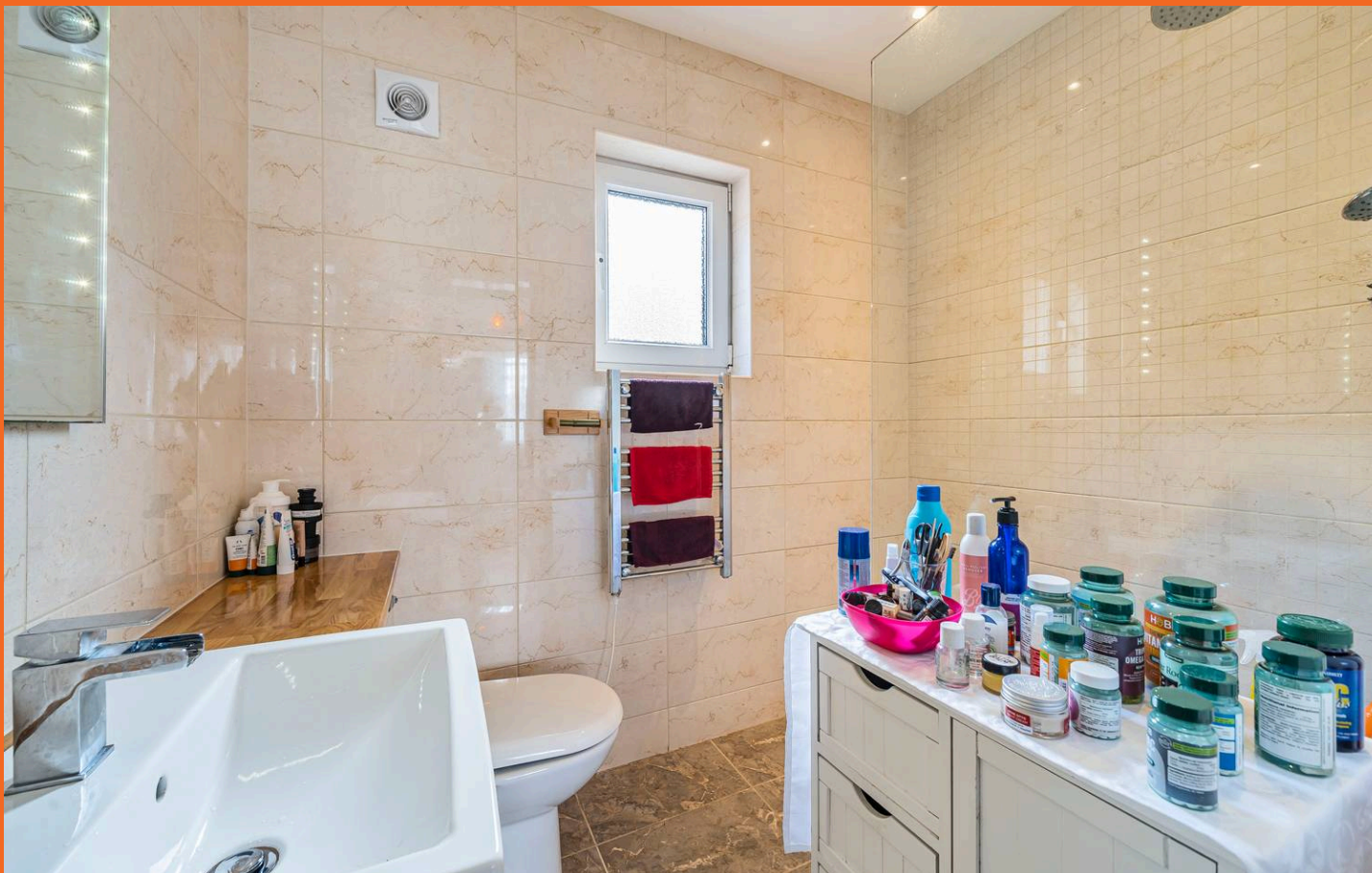
Electric meters and coat hooks, door to:

Lounge/Kitchen

22' 0" x 12' 11" (6.71m x 3.94m)

Fitted with a modern matching range high gloss fronted wall and base mounted units and drawers with roll edge work surface over. 1.5 bowl stainless steel sink unit with mixer tap. Fitted electric oven and hob with cooker hood above. Concealed integrated fridge/freezer and washer/dryer. Cupboard housing the central heating boiler. Night storage heater, inset ceiling spotlights. 4 Double glazed windows, door to:





Bedroom
11' 3" x 8' 6" (3.43m x 2.59m)

White washed blank canvas master bedroom with quality wooden flooring leading to en-suite shower room. Large UPVC window offering a light airy feel to the room.

Shower Room

7' 8" x 5' 3" (2.34m x 1.60m)

Fitted with a modern matching 3 piece suite comprising of: Walk-in shower area with electric shower, low level WC and wash hand basin with mixer tap incorporated into vanity unit with vanity shelving and cupboards. Chromed ladder style electric radiator, inset ceiling spotlights. Double glazed window, tiled walls and flooring with under floor heating.

Outside

There are well maintained communal gardens which are laid mainly to lawn with mature shrubs and plants. Drying areas.

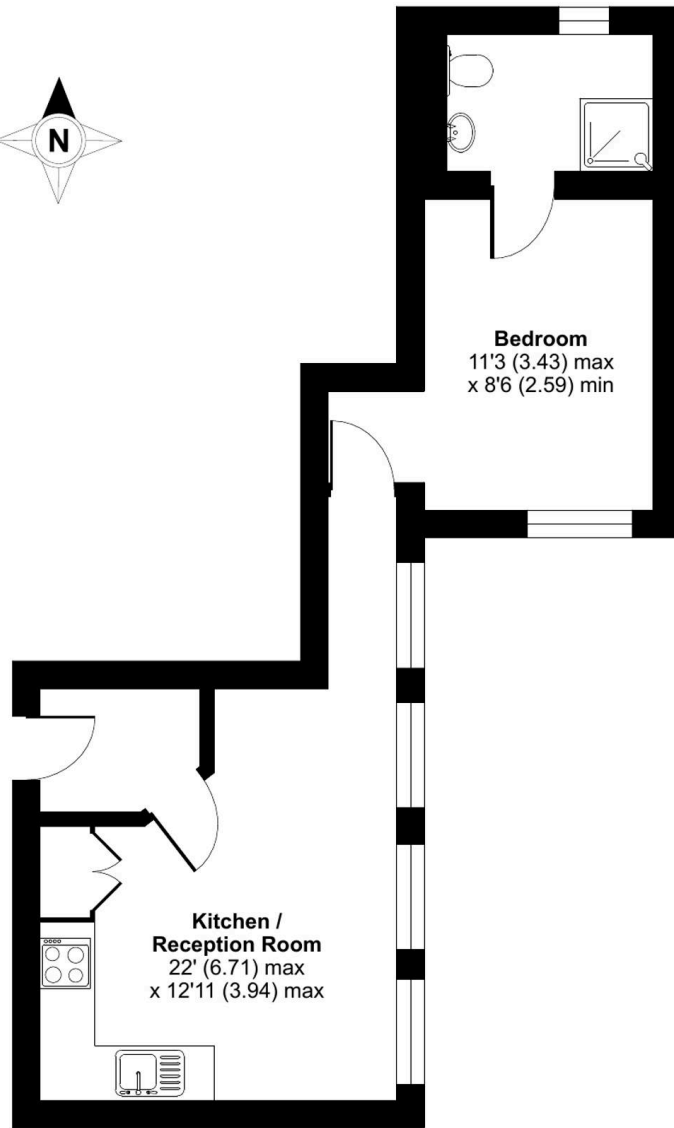
To the front of the building is the residents parking area where there is allocated and visitors parking. Outside tap for residents.



Abbeyfield House, Heywoods Road, Teignmouth, TQ14

Approximate Area = 365 sq ft / 33.9 sq m

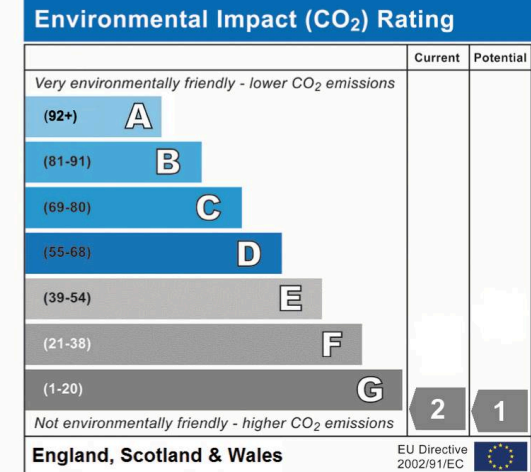
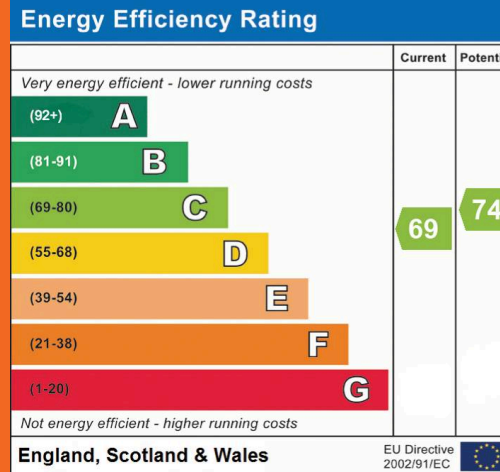
For identification only - Not to scale



Bedroom
11'3 (3.43) max
x 8'6 (2.59) min

**Kitchen /
Reception Room**
22' (6.71) max
x 12'11 (3.94) max

FIRST FLOOR



**Certified
Property
Measurer**

Floor plan produced in accordance with RICS Property Measurement Standards incorporating International Property Measurement Standards (IPMS2 Residential). © nchecon 2023. Produced for NXMVE Group Ltd (Nexmove). REF: 1054590



Nexmove

Riviera Buildings, 3 Den Road, Devon - TQ14 8AJ

01626 681972 • sales@nexmove.co.uk • www.nexmove.co.uk/