



MANOR ROAD
RICHMOND

JACKSON-STOPS 

MANOR ROAD RICHMOND, TW9

ASKING PRICE: £3,900 PCM

SHORT LET - A wonderful 3-bedroom family home with a large and spacious open plan kitchen/reception room.

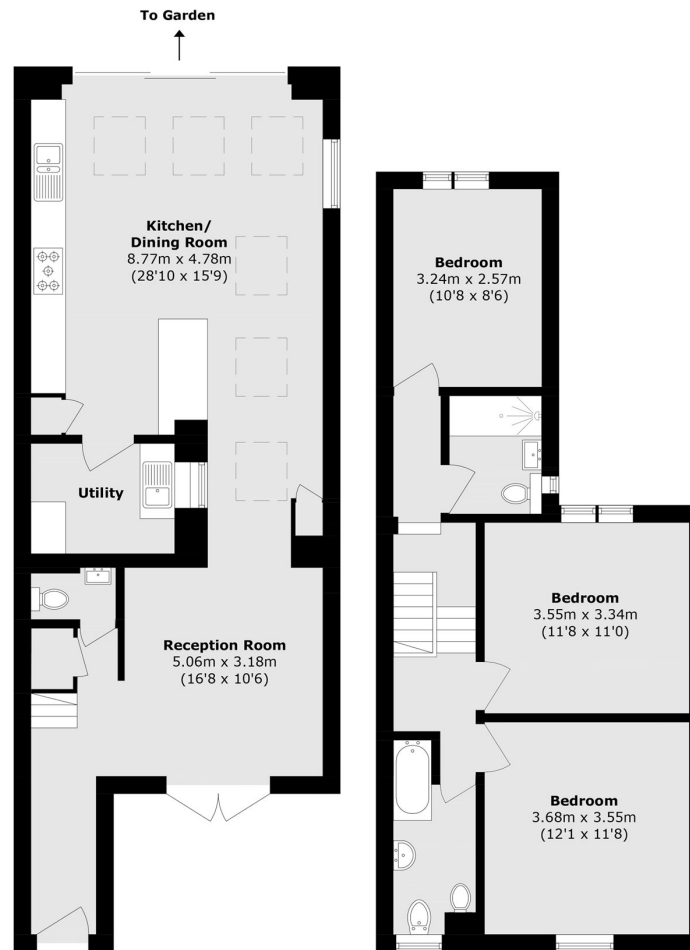
Manor Road is just moments from North Sheen Station, offering swift links to Richmond and into central London. Richmond's vibrant town centre is close by, providing an array of shops, restaurants, and cafés, as well as access to the picturesque River Thames and the expansive Richmond Park.



KEY FEATURES

- Available January 2026
- Two Bathrooms
- Off Street Parking
- Private Garden
- Open Plan Kitchen
- Close To Station





Ground Floor

First Floor

Total area (approx.): 115.3 sq. m (1,241.1 sq. ft)

Energy Rating: C. We aim to make our particulars both accurate and reliable. However they are not guaranteed; nor do they form part of an offer or contract. If you require clarification on any points then please contact us, especially if you are travelling some distance to view. Please note that appliances and heating systems have not been tested and therefore no warranties can be given as to their good working order.

ASKING PRICE: £3,900 PCM

TEDDINGTON

020 8943 9955

teddingtonlettings@jackson-stops.com

jackson-stops.co.uk

JACKSON-STOPS

