



Aubert Park, N5

£825,000

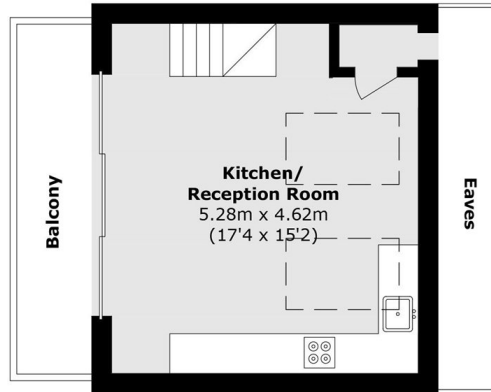
A bright and spacious two-bedroom flat arranged over the upper floors of a Victorian house, featuring a terrace with far-reaching North London views. The property has been immaculately refurbished, offering flexible living accommodation with two generous double bedrooms, two bathrooms, and a utility room.

Aubert Park is a residential, tree lined street in Highbury N5. Arsenal (Piccadilly line) and Drayton Park (National Rail) stations are both within a half mile away. For green space, Clissold Park and Highbury Fields are both within easy reach, and well renowned Highbury Barn is close by for a range of boutique shops and eateries.

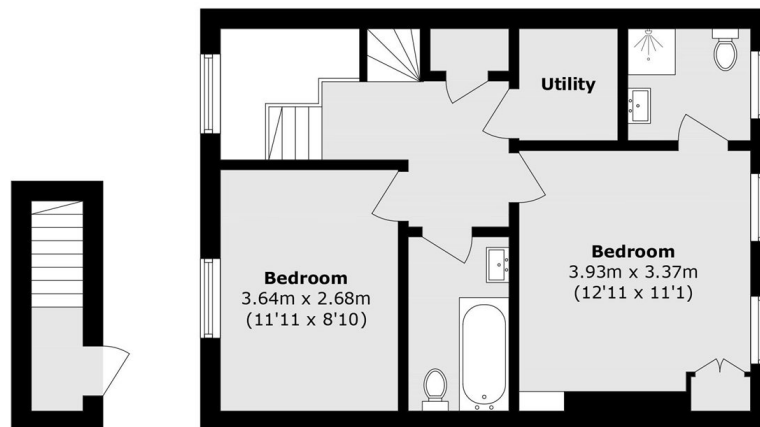
Features

- Share of Freehold
- Split-Level
- Two Bedrooms
- Two Bathrooms
- Private Terrace
- Period

Aubert Park, London, N5



Third Floor



First Floor

Second Floor

Total area (approx.): 72.9 sq. m (784.6 sq. ft)

Balcony Total (approx.): 5.9 sq. m (63.5 sq. ft)

(Excluding Eaves)