



Estate Agents
Hurst

60 Windrush Court, High Wycombe, Buckinghamshire, HP13 7UL
Offers In Excess Of £600,000

60 Windrush Court, High Wycombe, Buckinghamshire, HP13 7UL

Built in 2020 by the highly regarded Revere Homes, this bright and spacious four-bedroom detached family home is presented to the market in immaculate condition throughout. Tucked away at the end of a quiet cul-de-sac on the sought-after Terriers side of High Wycombe, the property enjoys a peaceful setting while remaining within easy reach of local schools, shops and transport links, including the Royal Grammar School and a Tesco Express. The accommodation comprises: inviting entrance hall, guest cloakroom, large living room, and a superb open-plan kitchen/dining room featuring bi-fold doors that open onto the rear garden and patio. Upstairs offers four well-proportioned bedrooms, including a principal bedroom with en-suite shower room, alongside a modern family bathroom. Further benefits include: remainder of Ark new build warranty, driveway parking for two vehicles, built-in wardrobes, and an enclosed rear garden with patio seating area and raised lawn. The property also benefits from underfloor heating (smart-controlled via an app), as well as stylish fitted Hillarys shutters to the windows, partially boarded loft space, gas central heating, and UPVC double glazing.



BUILT IN 2020

FOUR BEDROOMS

DETACHED FAMILY HOME

DRIVEWAY PARKING FOR TWO CARS

GUEST CLOAKROOM

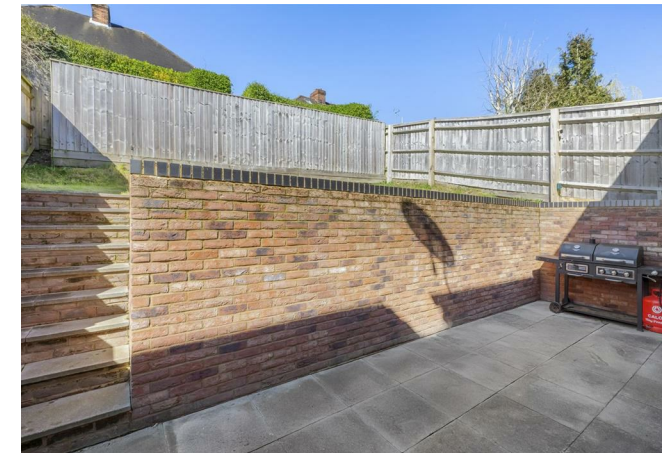
UNDER FLOOR HEATING TO GROUND FLOOR

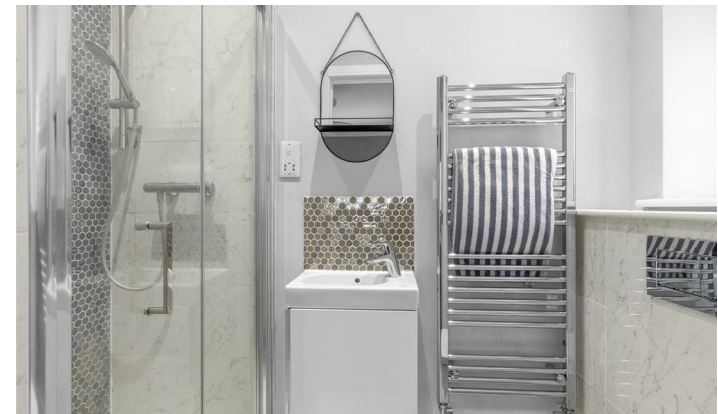
KITCHEN/DINER WITH BI-FOLDING DOORS

QUIET CUL-DE-SAC LOCATION

GAS CENTRAL HEATING

UPVC DOUBLE GLAZING





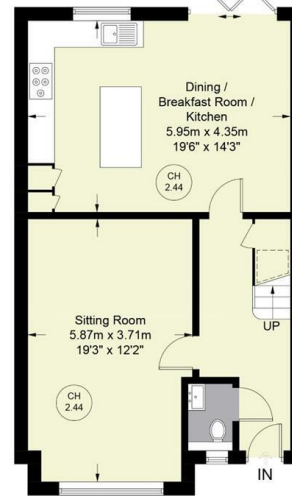


Windrush Court

Approximate Gross Internal Area
 Ground Floor = 641 sq ft / 59.6 sq m
 First Floor = 638 sq ft / 59.3 sq m
 Total = 1279 sq ft / 118.9 sq m



CH 2.44 = Ceiling Height



GROUND FLOOR



FIRST FLOOR

Floor Plan produced for Hursts by Media Arcade Ltd ©.
 Illustration for identification purposes only. Window and door openings are approximate. Whilst every attempt is made to assure accuracy in the preparation of this plan, please check all dimensions, shapes and compass bearings before making any decisions reliant upon them.



The Property Misdescriptions Acts 1991. Hurst Estate Agents have not tested any apparatus, equipment, fixture and fittings or services and cannot verify that they are in working order or fit for the purpose. A buyer is advised to obtain verification from their solicitor or surveyor. References to the tenure of the property are based on information supplied by the seller. Hurst Estate Agents has not had sight of the title documents. A buyer is advised to obtain verification from their solicitor.