



Pentreath Close
Fowey
PL23 1EP

£1,125 PCM

- Contents:
Unfurnished

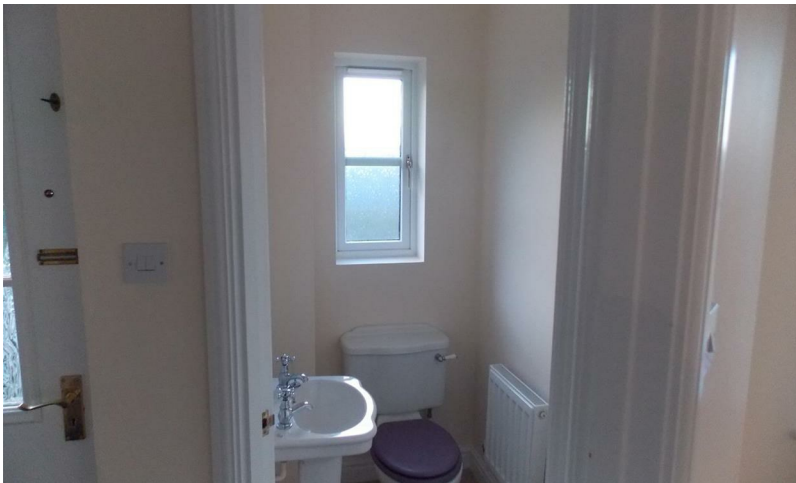
- Deposit Required:
£1,298

- Date Available:
15th June 2026

- Council Tax Band:
C



 **Millerson**
millerson.com



 3
  2
  2
  C69

Contact Us
 1 Market Street
 St Austell
 Cornwall
 PL25 4BB

centralsoutheastlettings@smartmillerson.
 01726 72236
<https://www.millerson.com>

Valuation Request



Energy Efficiency Rating		
	Current	Potential
Very energy efficient - lower running costs		
(92 plus) A		
(81-91) B		83
(69-80) C	69	
(55-68) D		
(39-54) E		
(21-38) F		
(1-20) G		
Not energy efficient - higher running costs		
England & Wales	EU Directive 2002/91/EC	