

Ladywell Road, SE13

£375,000

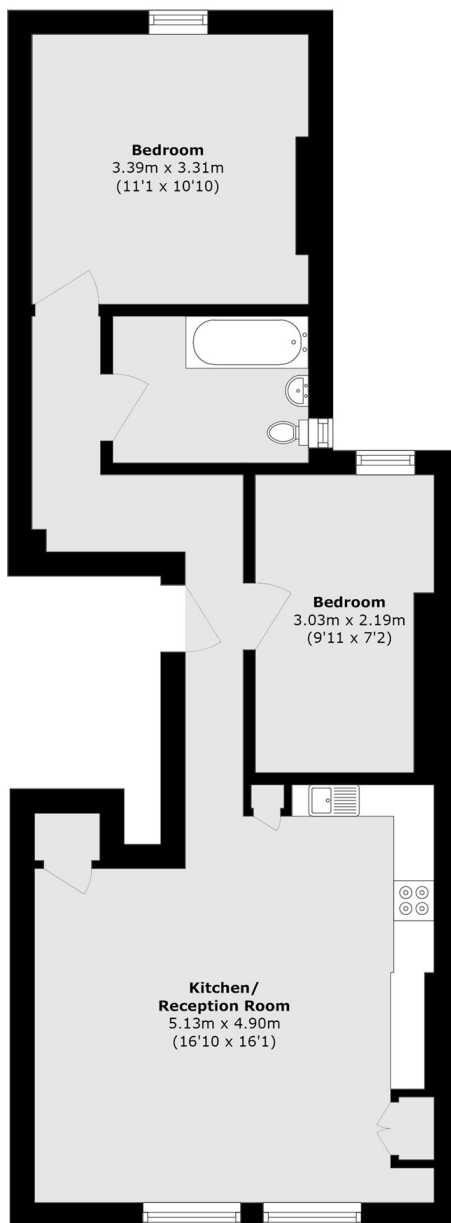
A delightful first floor flat set in a handsome Victorian house moments from Ladywell Village. There is a bright reception room, two double bedrooms and offered with no onward chain.

Ladywell Road is a popular road close to the open space of Hilly Fields Park and Ladywell Fields along with the amenities of Ladywell Village. Ladywell, Lewisham, Crofton Park and Brockley train stations offer excellent links into the City.

Features

- Two Bedrooms
- Bright Reception Room
- Period Conversion
- Close To Green Spaces
- Close To Transport
- Chain Free

Ladywell Road, London, SE13



Total area (approx.): 54.2 sq. m (583.4 sq. ft)

Dexters

Brockley
369 Brockley Road
London
SE4 2AG
Sales
020 8815 2220

Energy Rating: D. We aim to make our particulars both accurate and reliable. However they are not guaranteed; nor do they form part of an offer or contract. If you require clarification on any points then please contact us, especially if you're traveling some distance to view. Please note that appliances and heating systems have not been tested and therefore no warranties can be given as to their good working order.

 **RICS** | Regulated
Estate Agent
and Letting Agent

[dexters.co.uk](https://www.dexters.co.uk)