

19 Greenford Avenue, Hanwell, London, W7 1LD
020 8567 3219



Leasehold / Maisonette

Half Acre Road, Hanwell

£465,000

An opportunity to purchase a light and spacious first floor two bedroom split level period maisonette in a sought after location within a very short walk of Hanwell Elizabeth Line station.

- Split Level Maisonette
- Two Bedrooms
- Sought After Hanwell Location
- Short Walk To Hanwell Elizabeth Line
- Gas Central Heating
- Double Glazing
- Extended Lease
- Low Outgoings



Leasehold / Maisonette

Half Acre Road, W7 3JJ

£465,000

This first floor maisonette offers light and spacious accommodation including a sunny reception room with stripped wooden floors which is open plan with a large well fitted kitchen zone with built in appliances including dishwasher, washing machine and two ovens, bedroom two is on the first floor also a full bathroom suite with a separate shower plus a work station on the landing. The second floor loft conversion provides a large double bedroom with Velux windows and plenty of storage space.

Additional benefits include gas central heating, double glazing, an extended 175 year lease with no ground rent or service charges.

Superbly located on a popular residential road close to local restaurants, coffee shops, day to day shops and pubs plus the lovely green open spaces of Conolly Dell Rest Gardens and Brent Lodge (Bunny) park with a children's zoo. Hanwell Elizabeth Line station is close at hand offering a speedy commute into Central London & Heathrow, with regular bus routes available on Hanwell Broadway and Greenford Avenue.

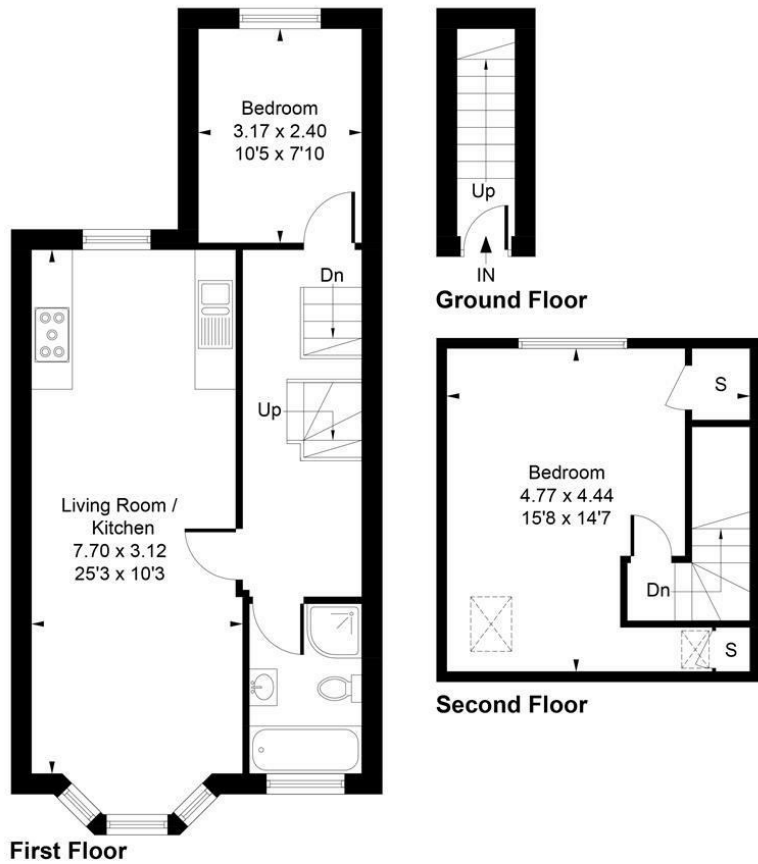


19 Greenford Avenue, Hanwell, London, W7 1LD
020 8567 3219



16A Half Acre Road, W7

Approximate Gross Internal Area
70.20 sq m / 756 sq ft

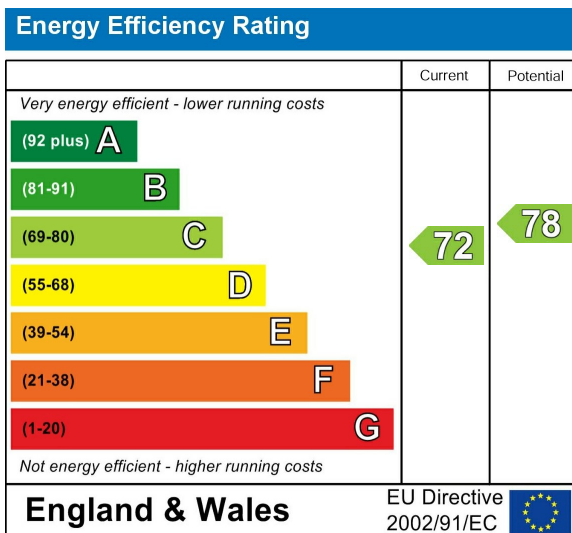


Whilst every attempt has been made to ensure the accuracy of the floor plan contained here, measurements of doors, windows, rooms and any other items are approximate and no responsibility is taken for any error, omission, or mis-statement. This plan is for illustrative purposes only and should be used as such by any prospective purchaser.
Produced by jcphotographystudio.com

Council Tax Band

C

Energy Performance Graph



Call us on

020 8567 3219

hanwellsales@sintonandrews.co.uk

www.sintonandrews.co.uk

Agents Note: Whilst every care has been taken to prepare these particulars, they are for guidance purposes only. All measurements are approximate and are for general guidance purposes only and whilst every care has been taken to ensure their accuracy, they should not be relied upon and potential buyers are advised to recheck the measurements.