



5 Robus Terrace Canterbury Road, Lyminge - CT18 8JW

Guide Price **£300,000**

Approximate Gross Internal Area = 85 sq m / 911 sq ft

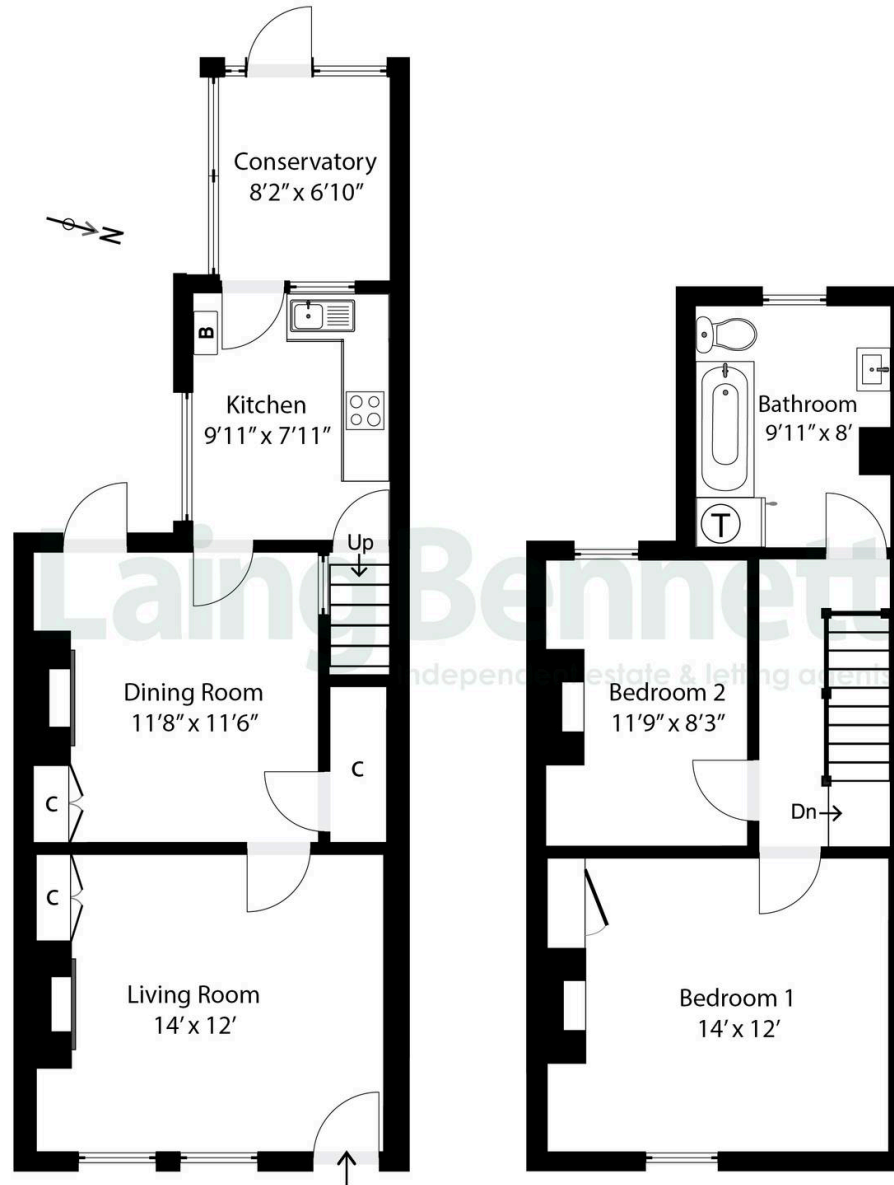


Illustration for Identification purposes only. Measurements are approximate. Dimensions given are between the widest points.
Not to scale. Outbuildings are not shown in actual location.

© Unauthorised reproduction prohibited - chriskemp@hotmail.com



5 Robus Terrace Canterbury Road

Lyminge, Folkestone

This charming period two-bedroom home is set in the heart of the village and offers a wealth of original features. The ground floor has a welcoming bright living room that features an attractive open fireplace, The dining room which is ideal for family gatherings has a feature fireplace and a glazed door to the garden. A country style kitchen leads to a peaceful conservatory, perfect for enjoying the garden in all seasons. The comfortable accommodation continues upstairs where there are two generously sized bedrooms with original feature fireplaces and a spacious family bathroom/WC. The front garden is an array of mature shrubs and seasonal plants, offering a warm welcome. To the rear a neat lawn is bordered by a delightful variety of colourful flowers, creating a private and picturesque retreat perfect for relaxation or entertaining. The home is filled with character and offers a wonderful opportunity for new owners to make it their own. The property further benefits from double glazed 'tilt and turn' windows. No chain.

Council Tax band: C

Tenure: Freehold

EPC Energy Efficiency Rating: D

EPC Environmental Impact Rating: D





**Laing
Bennett**
Independent estate & letting agents

Laing Bennett

Laing Bennett Ltd, The Estate Office, 8 Station Road – CT18 8HP

01303 863393

info@laingbennett.co.uk

www.laingbennett.co.uk/

DISCLAIMER – These details are for guidance only and do not form part of an offer or contract. Measurements are approximate. Laing Bennett Ltd and the Vendor/Landlord accept no liability. Services and appliances are untested. Applicants must make their own checks. Items shown may not be included. No staff have authority to give warranties.