



jordan fishwick

WITHINGTON
Arosa Court



Arosa Court, Withington, M20 4LZ

Guide Price £170,000



The Property

A well planned top floor apartment conveniently situated for Withington village and located off Wilmslow road offering excellent commuter links to Manchester and Didsbury. Being sold with no onward chain the apartment would be suitable for a number of buyers including a couple or buy to let landlord looking for a quick purchase. Comprises: Communal entrance hall, entrance hall, lounge/dining room, separate kitchen, two double bedrooms and a bathroom with a three piece suite and over bath shower. Electric heating and double glazing are both installed. Private residents off road parking and communal lawned gardens complete the impressive specification. Viewing of this apartment is highly recommended. NO CHAIN.

Directions

M20 4LZ



- A two bedroom first floor apartment
- Double Bedrooms
- Living area with separate kitchen
- Ideal for a Couple or buy to let landlord
- Private Allocated Parking
- Excellent Transport Links
- Great Location & Close to all Amenities
- No chain

Postcode - M20 4LZ

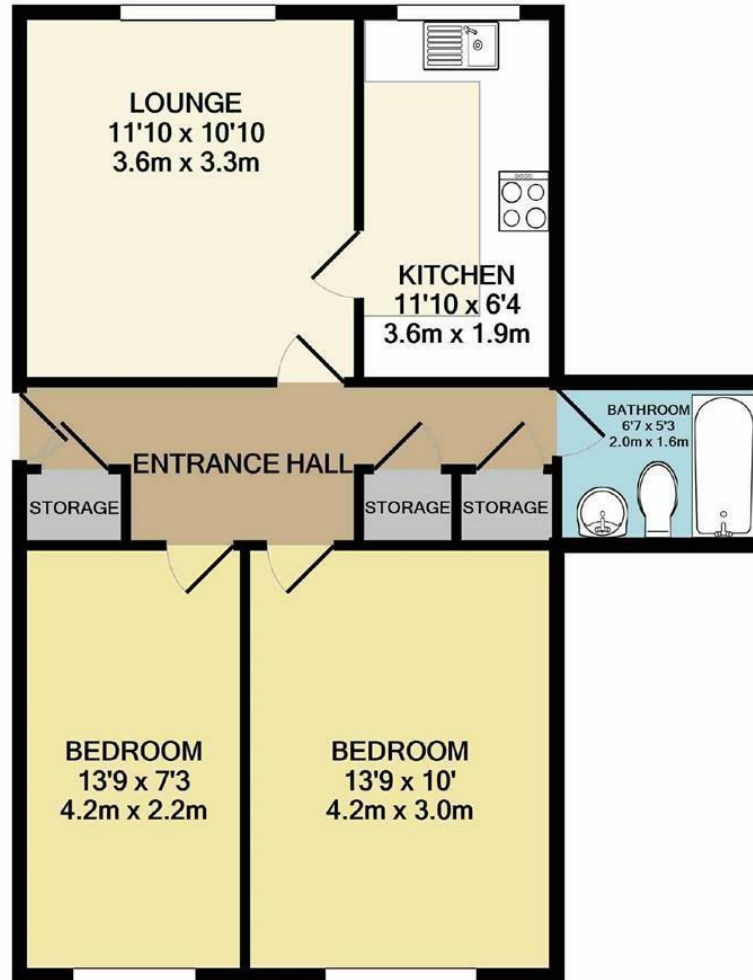
EPC Rating - C

Floor Area - 564.00 sq ft

Local Authority - Manchester City Council

Council Tax - B





TOTAL APPROX. FLOOR AREA 564 SQ.FT. (52.4 SQ.M.)
 Measurements are approximate. Not to scale. Illustrative purposes only
 Made with Metropix ©2021



These particulars are believed to be accurate but they are not guaranteed and do not form a contract. Neither Jordan Fishwick nor the vendor or lessor accept any responsibility in respect of these particulars, which are not intended to be statements or representations of fact and any intending purchaser or lessee must satisfy himself by inspection or otherwise as to the correctness of each of the statements contained in these particulars. Any floorplans on this brochure are for illustrative purposes only and are not necessarily to scale.

Offices also at: Wilmslow, Macclesfield, Hale, Sale, Chorlton, Glossop, Manchester & Salford

757-759 Wilmslow Road, Didsbury Village, Manchester

0161 445 4480

didsbury@jordanfishwick.co.uk
 www.jordanfishwick.co.uk