



Lyndhurst Avenue, TW2

£850,000

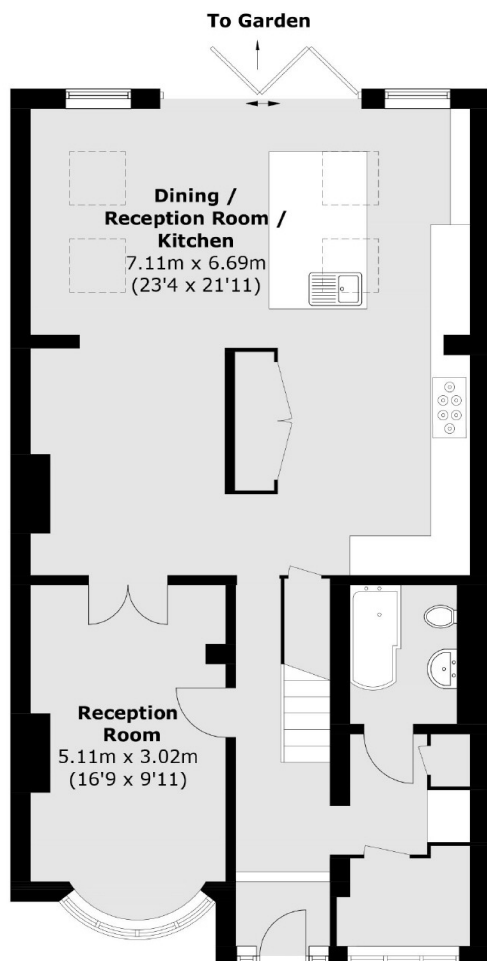
This stunning four bedroom 1930's semi detached house would be a wonderful family home for years to come and it has been renovated by the current owner to an exceptional standard throughout. Benefits include three bath / shower rooms, off street parking, a large private garden and further potential to extend the loft if required.

Lyndhurst Avenue is adjacent to the River Crane and Crane Park. Both Whitton high street and Whitton mainline station are less than a mile away which offers you a fast link to London Waterloo and there are a number of exceptional schools nearby including Turing House and Waldegrave Girls.

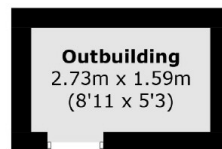
Features

- Four Bedrooms
- Three Bath / Shower Rooms
- Off Street Parking
- Large Private Garden
- Excellent Condition
- Potential To Extend Further

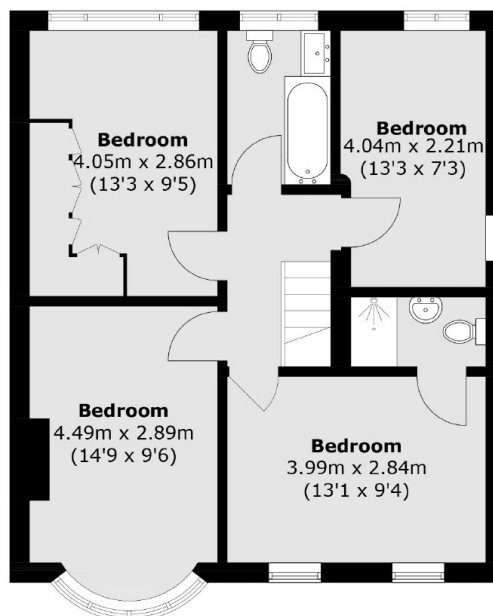
Lyndhurst Avenue, Whitton, TW2



Ground Floor



**(Not Shown In Actual
Location / Orientation)**



First Floor

Total area (approx.): 140.8 sq. m (1,515.5 sq. ft)
Outbuilding: 4.5 sq. m (48.4 sq. ft)