

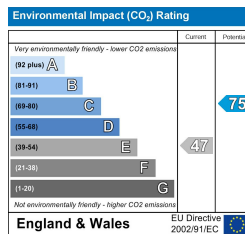
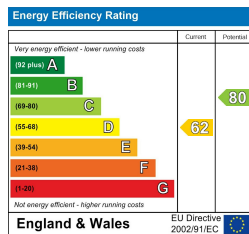
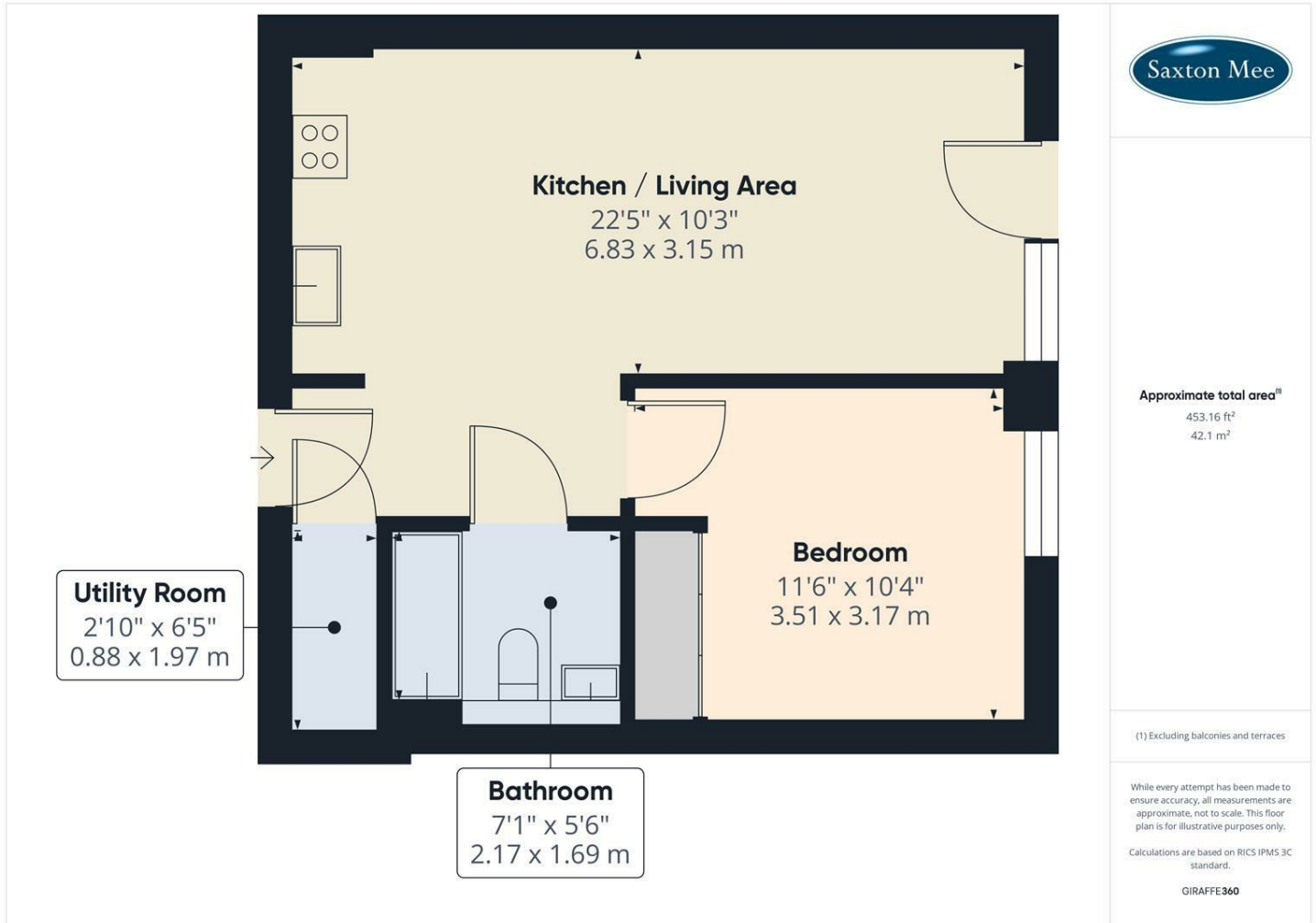


## **Apt 49 The View City Lofts, Sheffield S1 2LB** **£950 Per Month**

To let is this excellent, spacious one bedroom 8th floor apartment forming part of this iconic Sheffield building. Set in the heart of the City Centre, ideal for the working executive/couple is this beautifully presented double bedroom apartment.

Internally comprising; entrance hallway with utility room housing washer dryer, open plan kitchen/living/diner with integrated appliances and Juliet balcony, master double bedroom, luxury bathroom with 3 piece suite and shower over bath.

Restrictions: No smokers, pets. Energy Efficiency Rating D. Council Tax Band B



Banner Cross  
Hathersage  
Bakewell  
Matlock  
www.saxtonmee.co.uk

949-951 Ecclesall Road, Sheffield S11 8TN  
3 Bank View, Main Road, Hathersage S32 1BB  
Matlock Street, Bakewell DE45 1EE  
27 Causeway Lane, Matlock, DE4 3AR

T: 0114 268 3241  
T: 01433 650009  
T: 01629 815307  
T: 01629 828250

E: bannercross@saxtonmee.co.uk  
E: hathersage@saxtonmee.co.uk  
E: bakewell@saxtonmee.co.uk  
E: matlock@saxtonmee.co.uk