

Castles



OFFERS IN EXCESS OF

£164,950

Hutton Court,

Edmonton, N9 8PQ

PROPERTY SUMMARY

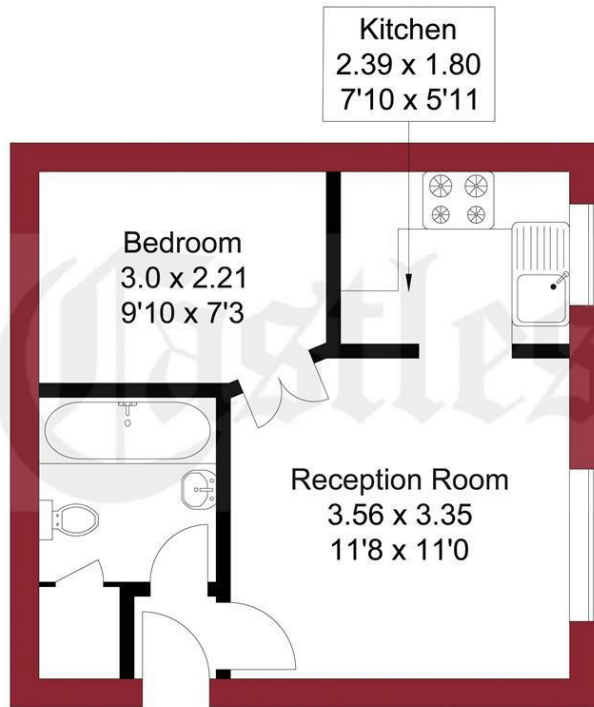
A top floor studio /one bedroom purpose built flat conveniently located within the heart of N9 Edmonton. The property comprises an reception/living room, double bedroom, three piece bathroom suite, modern fitted kitchen, additional storage available via loft space. Features include residents allocated parking (permit holders), intercom system, electric heating system, double glazing and chain free.

Located only 0.8 miles from Edmonton Green Overground Station and 0.8 miles from Ponders End station. Viewing is recommended





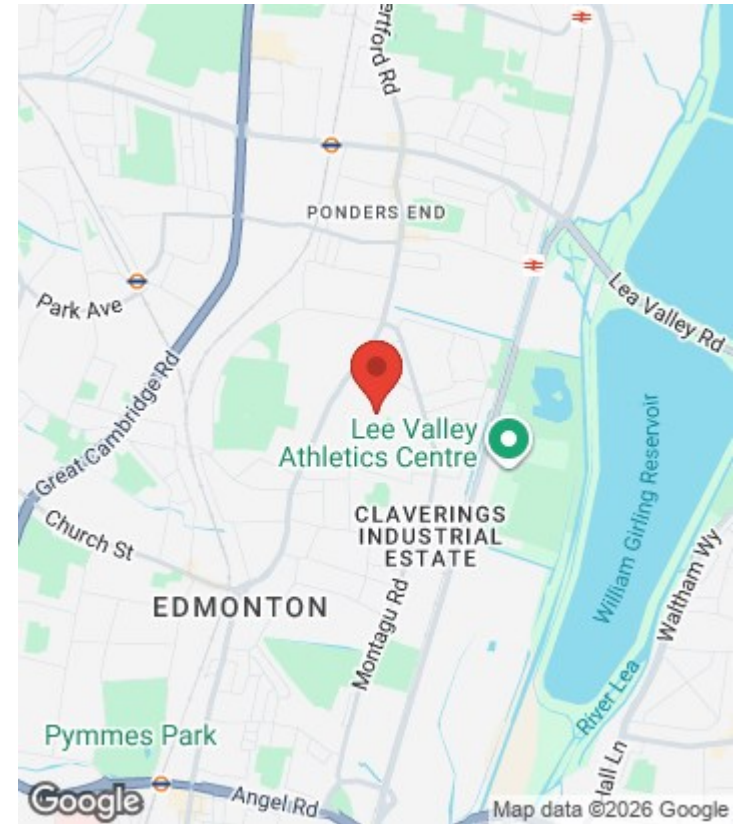
APPROXIMATE GROSS INTERNAL AREA
30.0 sqm / 322.91 sqft



SECOND FLOOR

THIS PLAN IS FOR ILLUSTRATION ONLY AND MAY NOT BE
REPRESENTATIVE OF THE PROPERTY

For a guide to the area
please scan this code for
more information



Apartment - Studio

Leasehold

Council: Martin Shepherd Solicitors LLP

Council Tax Band: B

Agents Note: Whilst every care has been taken to prepare these particulars, they are for guidance purposes only. All measurements are approximate and are for general guidance purposes only and whilst every care has been taken to ensure their accuracy, they should not be relied upon and potential buyers/tenants are advised to recheck the measurements



OFFICE ADDRESS

438 Hertford Road
Edmonton
London
N9 8AB

OFFICE DETAILS

020 8804 8123
edmonton@castles.london
<https://www.castles.london/>

| Energy Efficiency Rating | | Current | Potential |
|---|--|-------------------------|-----------|
| Very energy efficient - lower running costs | | | |
| (92-100) A | | | |
| (81-91) B | | | |
| (69-80) C | | | |
| (55-68) D | | 68 | 77 |
| (39-54) E | | | |
| (21-38) F | | | |
| (1-20) G | | | |
| Not energy efficient - higher running costs | | | |
| England & Wales | | EU Directive 2002/91/EC | |