



Price

£335,000

Leasehold

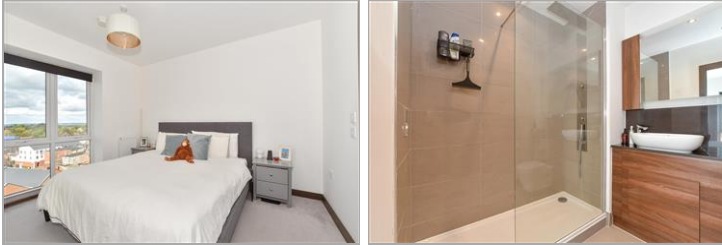
2x  2x  1x 

Elizabeth Place, Queens
Road, East Grinstead,
West Sussex, RH19

OVER 60?

Secure this property
for up to **59% less!**

cubitt & west
Helping you move forwards



Main features

- Beautifully presented sixth floor apartment
- New Build Warranty remaining
- Allocated parking space in gated car park
- Large private balcony and access to residents roof garden
- Conveniently situated in town centre location

Accommodation

SIXTH FLOOR

Entrance Hall

Lounge/Kitchen: 20'3 x 18'5 (6.18m x 5.62m)

Balcony

Bedroom 1: 11'7 x 11'5 (3.53m x 3.48m)

En-Suite Shower Room: 7'3 x 6'6 (2.21m x 1.98m)

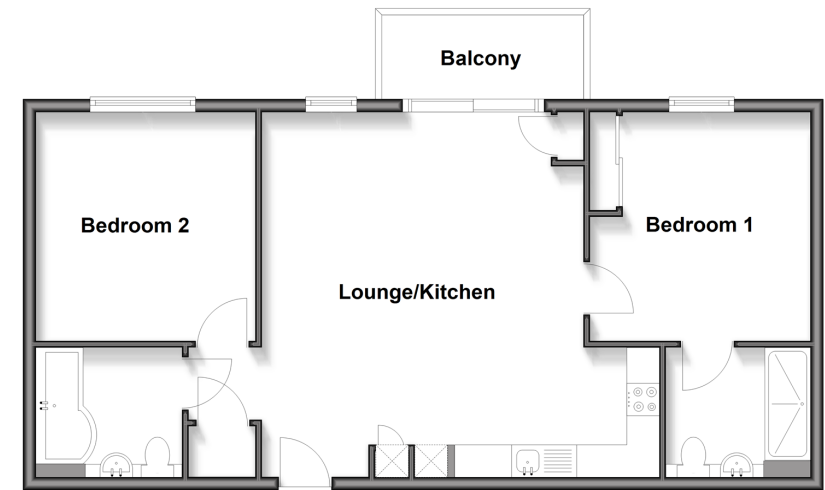
Bedroom 2: 11'7 x 11'1 (3.53m x 3.38m)

Bathroom

OUTSIDE

Allocated Parking Space

Sixth Floor
Approx. 67.2 sq. metres (723.6 sq. feet)



Call East Grinstead - 01342 314324 ■ cubittandwest.co.uk

- Legal advice should be taken to verify fixtures/fittings, planning, alterations and/or lease details
- Appliances & services are untested, dimensions are approximate and floor plans are not to scale
- Through a Homewise Home For Life Plan people aged 60+ can secure this property for up to 50% less, by purchasing a Lifetime Lease.



20614444/20250923/JS/CM