



Hizzy
ESTATE AGENTS

Hizzy
ESTATE AGENTS

16 The Street, Whatfield, Ipswich, IP7 6QW

£250,000

About the property

Rarely available in this popular village, this two double bedroom end-terraced home is offered with no onward chain. Presented in clean and tidy condition throughout, the property also offers excellent potential for further enhancement. A standout feature is the south-facing rear garden, extending to approximately 100ft and backing onto open countryside, providing lovely views and a good degree of privacy. Internally, the property comprises an entrance hall with stairs to the first floor, a generous dual-aspect living/dining room with fireplace, and a fitted kitchen with direct access out to the garden. Upstairs, there are two well-proportioned double bedrooms, with bedroom two enjoying wonderful garden and countryside views, along with a smart, modern shower room. The property benefits from oil-fired central heating.

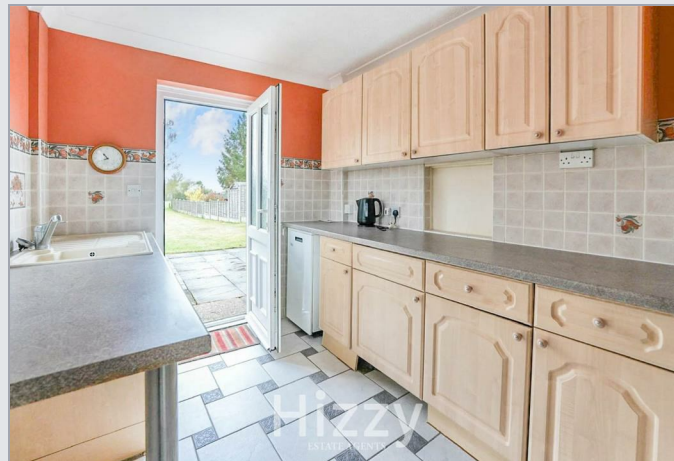
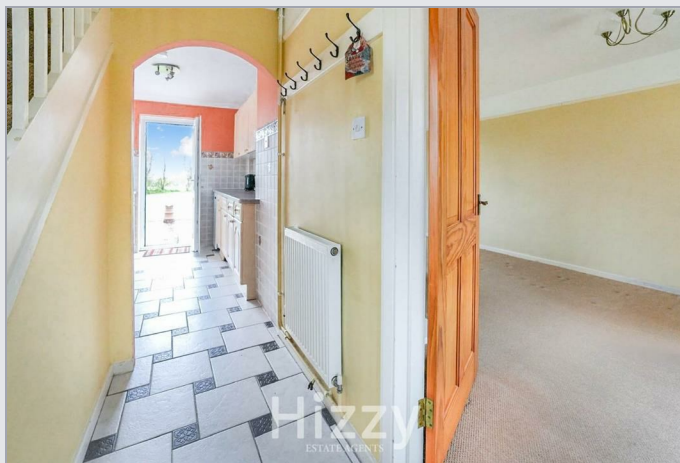
Outside

Outside, there is side gate access leading into the rear garden, which extends to approximately 100ft and is predominantly laid to

lawn, complemented by a generous paved terrace—ideal for outdoor entertaining. The garden backs onto open countryside, offering attractive views and a good degree of privacy. There is also a brick-built workshop/store measuring approximately 9ft6 x 5ft6 with power, along with a timber garden shed. Parking is available on-street outside the property and additional off road parking is available on a first come first served basis a short distance away.

Useful info

The property has mains water, electricity and drainage connected. The heating is oil fired (not tested). The council tax band is B with the local authority being Babergh District Council, Endeavour House, 8 Russell Road, Ipswich, IP1 2BX. The What3words location is ///bake.cherubs.warmers. Broadband download speed up to 74Mbps and upload speed up to 20Mbps. Mobile coverage good outdoor on EE, O2, Vodafone and Three. No services have been tested by the agents.





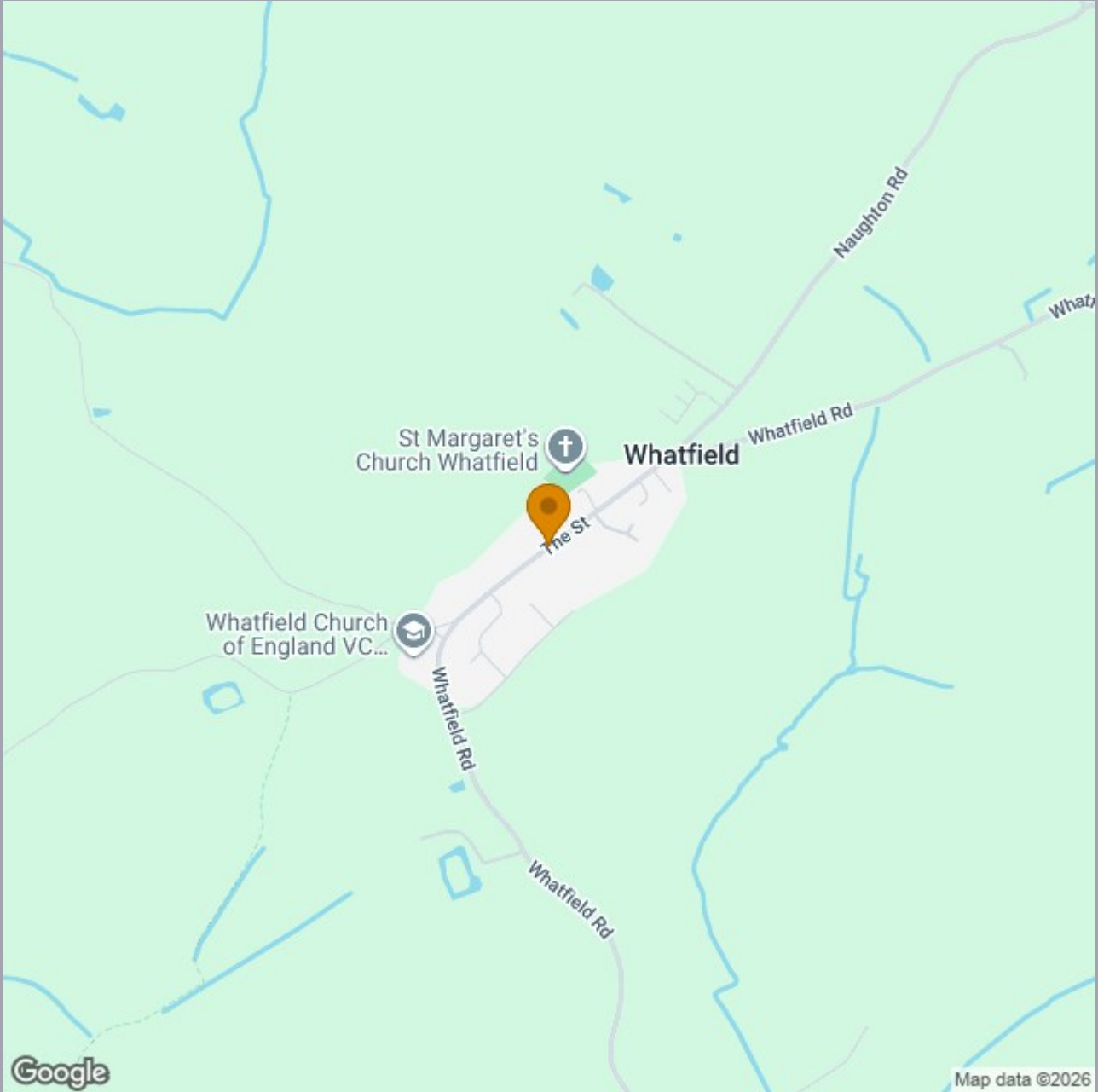
Hizzy
ESTATE AGENTS

- South-facing rear garden approx. 100ft
- Two double bedrooms
- Modern first floor shower room

- Backs onto open countryside
- Bedroom two with countryside views
- No onward chain with scope to improve

- End-terraced home in popular village
- Dual-aspect living/dining room with fireplace





St Margaret's Church Whatfield

Whatfield

Whatfield Church of England VC...

The St

Naughton Rd

Whatfield Rd

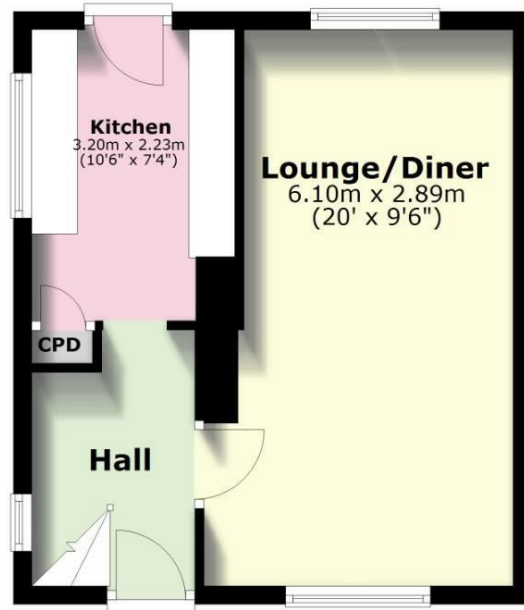
Whatfield Rd

Whatfield Rd

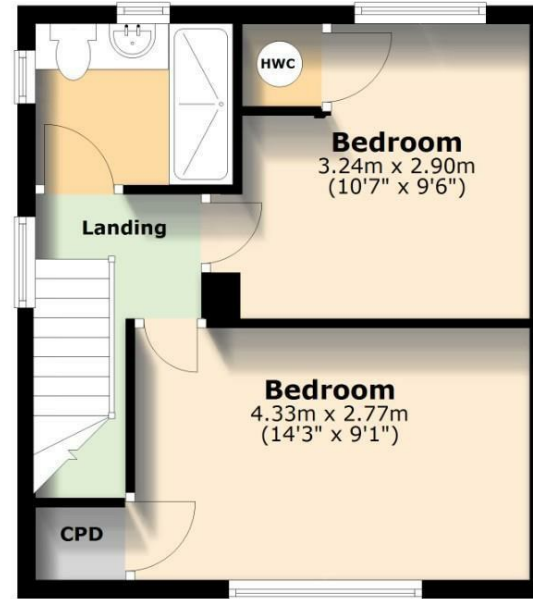
Google

Map data ©2026

Ground Floor



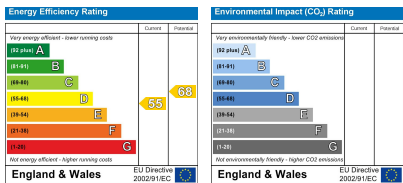
First Floor



Total area: approx. 63.3 sq. metres (681.4 sq. feet)

The Floorplan is intended as a guide only and all measurement are approximate and not to scale.
Plan produced using PlanUp.

EPC



01473 875101 | hello@hizzyproperty.co.uk | www.hizzyproperty.co.uk

These particulars, whilst believed to be accurate are set out as a general outline only for guidance and do not constitute any part of an offer or contract. Intending purchasers should not rely on them as statements of representation of fact, but must satisfy themselves by inspection or otherwise as to their accuracy. No person in this firm's employment has the authority to make or give any representation or warranty in respect of the property.