



64 Southdown Avenue

, Brighton, BN1 6EH

£850,000





# 64 Southdown Avenue



## Description

A beautifully presented four-bedroom Victorian terraced family home arranged over three floors, offering generous and well-balanced accommodation throughout. The property features a bright through lounge/dining room, a spacious kitchen/breakfast room, two bathrooms, and a delightful sunny rear garden.

This attractive bay-fronted home is set within a wide, tree-lined avenue forming part of the sought-after Preston Park Conservation Area. Benefitting from an east-west aspect, the house enjoys an abundance of natural light, creating a bright and airy feel throughout. Ideally positioned close to excellent local schools and the vibrant Fiveways community, with its popular independent shops, cafés, and bars, viewing is highly recommended.

### Location

Situated in the heart of the highly desirable and vibrant Fiveways area, this spacious family home is within easy walking distance of a variety of independent shops, cafés, and bars offering an excellent selection of

- 4 Bedroom Victorian Terraced House
- Beautiful Rear Garden
- Period Features
- Excellent School's Close By
- Close To Fiveways
- Spanning Over 3 Floors
- Parking Zone J
- 2 Bathrooms
- Good Location For Commuters
- Highly Desirable Location



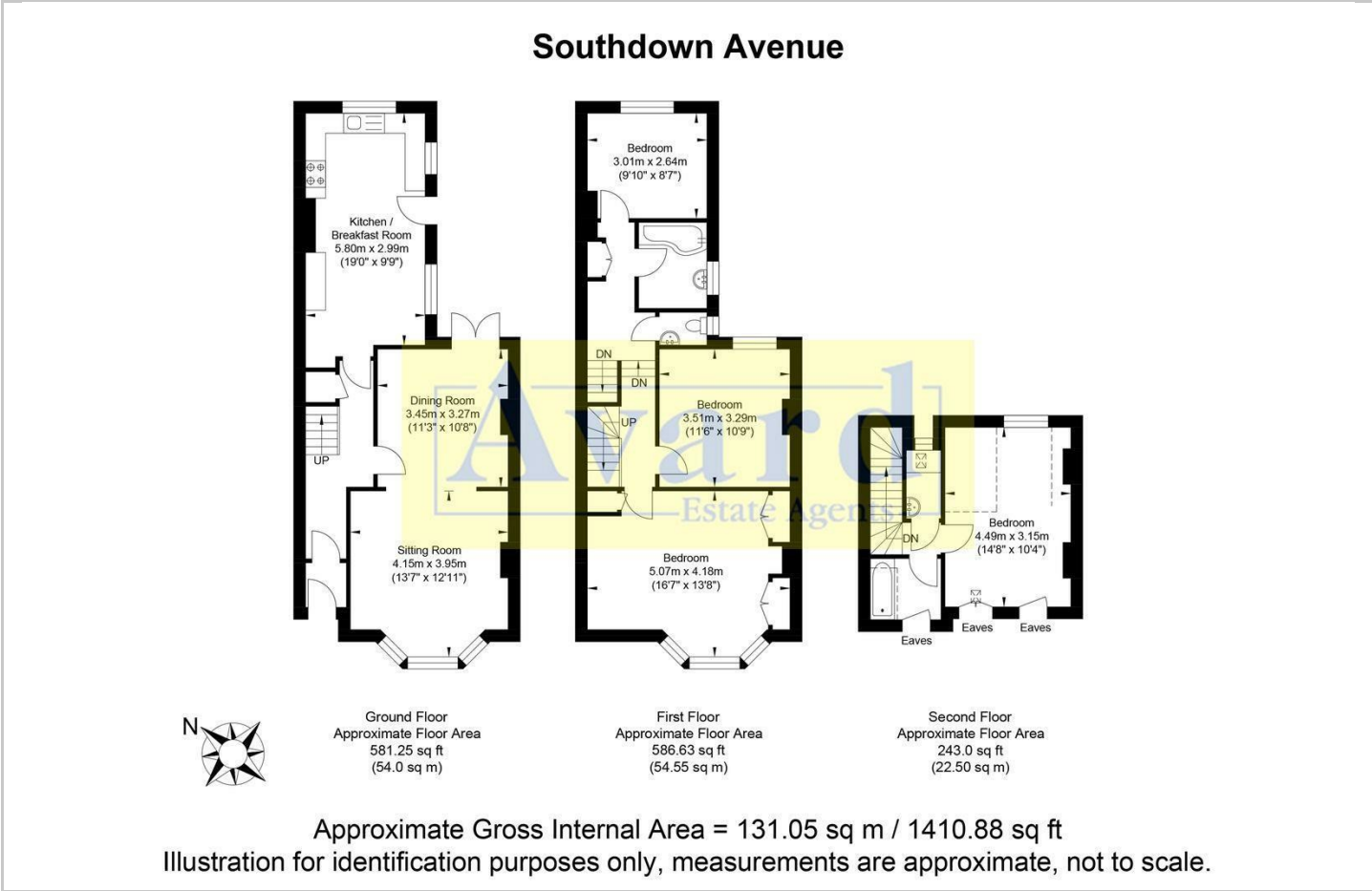


**Award**  
Estate Agents

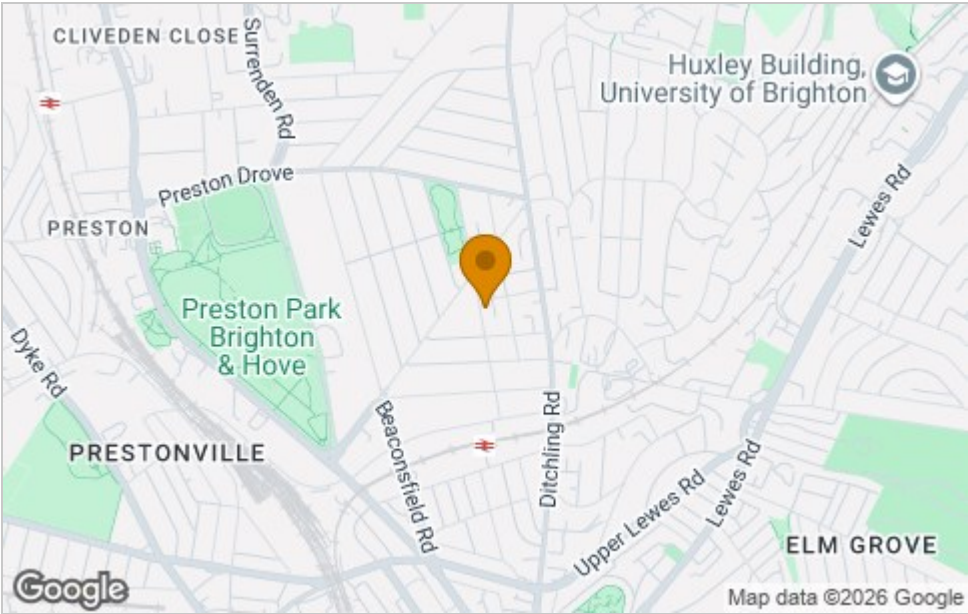




Floor Plan



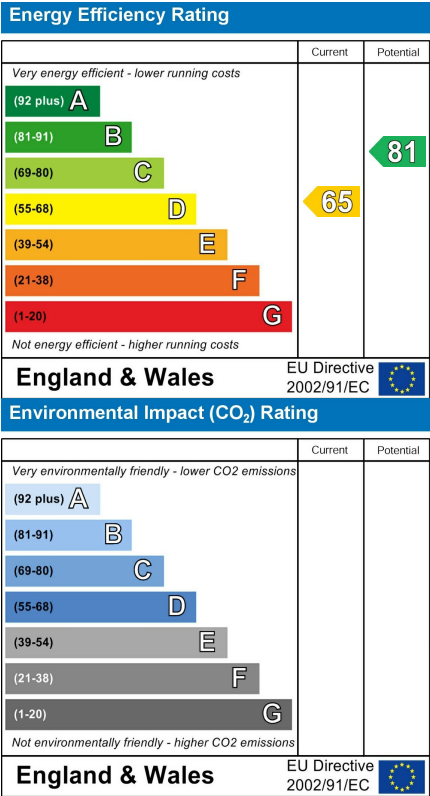
Area Map



Viewing

Please contact our Avard Estate Agents Office on 01273696000 if you wish to arrange a viewing appointment for this property or require further information.

Energy Efficiency Graph



These particulars, whilst believed to be accurate are set out as a general outline only for guidance and do not constitute any part of an offer or contract. Intending purchasers should not rely on them as statements of representation of fact, but must satisfy themselves by inspection or otherwise as to their accuracy. No person in this firms employment has the authority to make or give any representation or warranty in respect of the property.