



Town • Country • Coast



Sherrell Park
Bere Alston, Yelverton

Offers In Excess Of £200,000



2



1



1



D

Sherrell Park

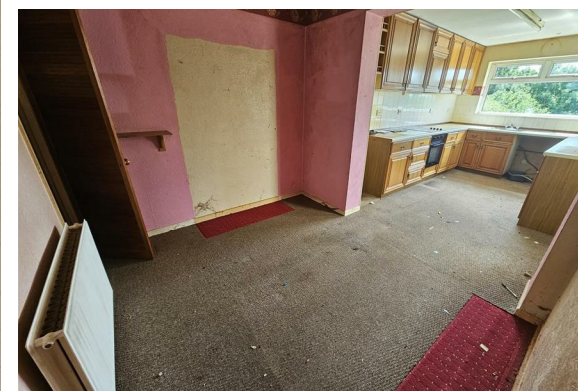
Bere Alston, Yelverton

Situated in this popular self-contained village is this semi-detached bungalow offered with no onward chain and ripe for refurbishment.

The accommodation comprises an entrance hall, sitting room with stone fireplace housing a multi-fuel fire. The hall then leads to the Kitchen/Diner with a cupboard housing the gas fired boiler (not tested) and kitchen area with a range of wall and base units. There are two double bedrooms and a bathroom.

To the rear and accessed via steps from the kitchen, or the driveway, is a large rear porch with doors leading to the garage and out to the rear gardens. There is a workshop/store to the rear of the garage. The rear gardens consist of a decked area, in need of repair and a small pond. Useful greenhouse, useful log stores, lawn area and door into the 31'ft workshop with a further adjoining store.

A front garden with flower beds and driveway provides off road parking and access to the larger than average garage.





Entrance Hal

Living Room

12'4" x 11'5" (3.76m x 3.48m)

Kitchen/Diner

22'4" x 9'3" max (6.83m x 2.82m max)

Rear Lobby

Bedroom 1

10'5" x 9'10" (3.18m x 3.01m)

Bedroom 2

9'11" x 10'5" (3.03m x 3.19m)

Bathroom

6'3" x 5'8" (1.93m x 1.74m)

Garage

19'7" x 12'3" (5.97m x 3.75m)

Store rear of Garage

10'4" x 9'5" (3.17m x 2.89m)

Workshop

31'4" x 10'5" (9.56m x 3.20m)

Adjoining Store

9'10" x 9'6" (3.02m x 2.90m)

Services

Mains water, electricity, drainage and gas.

EPC

D63

Local Authority

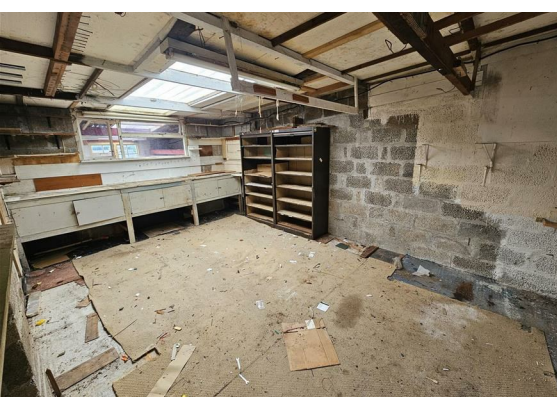
West Devon Borough Council - Tax Band B

Tenure

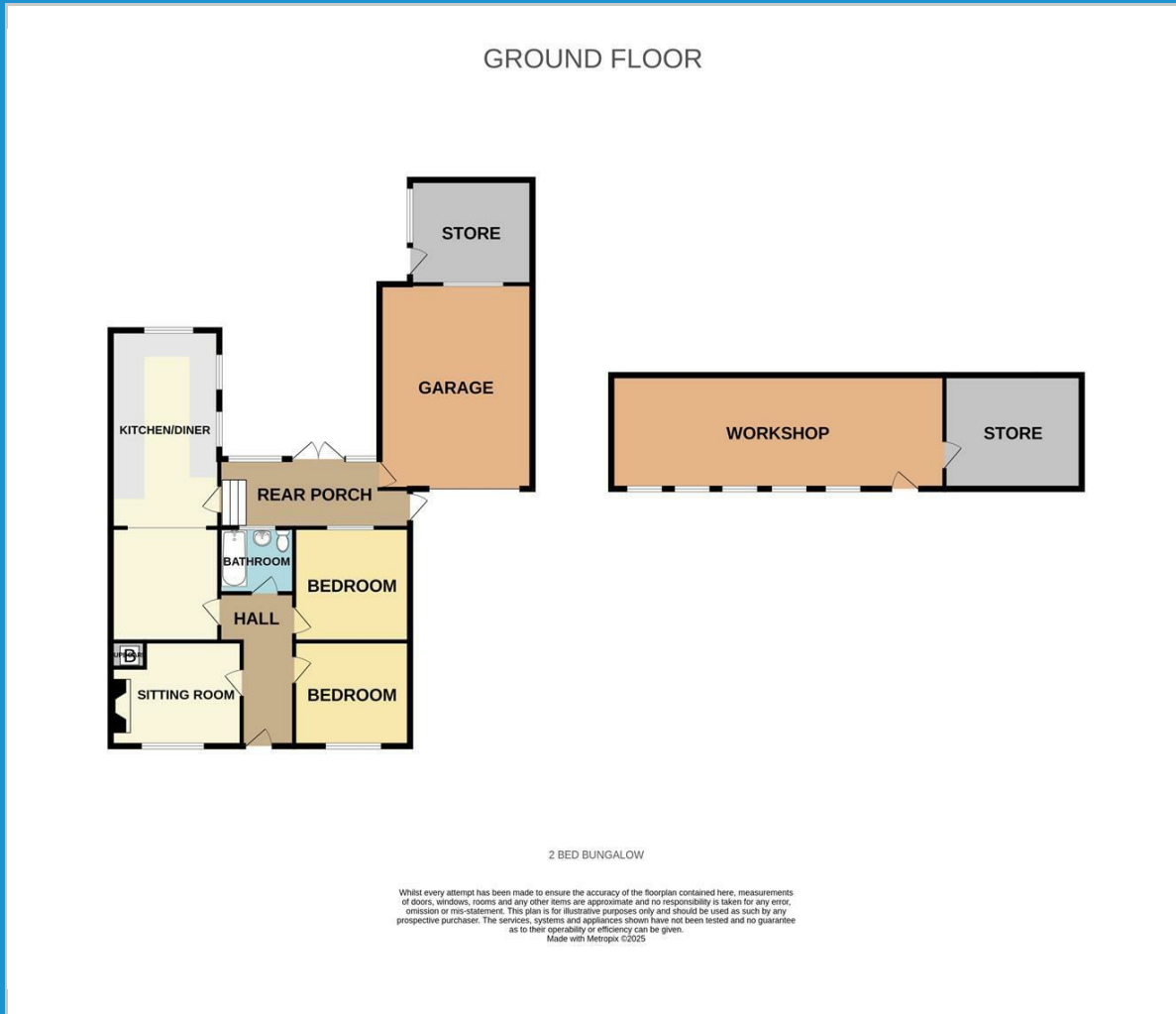
Freehold

Situation

Bere Alston is a village in West Devon which has a regular bus service to Tavistock and also boasts many amenities including a primary school, post office butchers, Co-Op, public house, doctor's surgery and a train station which links the village to Plymouth. The Bere Peninsula is located between the Ocean City of Plymouth and the Ancient Stannary Town of Tavistock.



Floor Plan



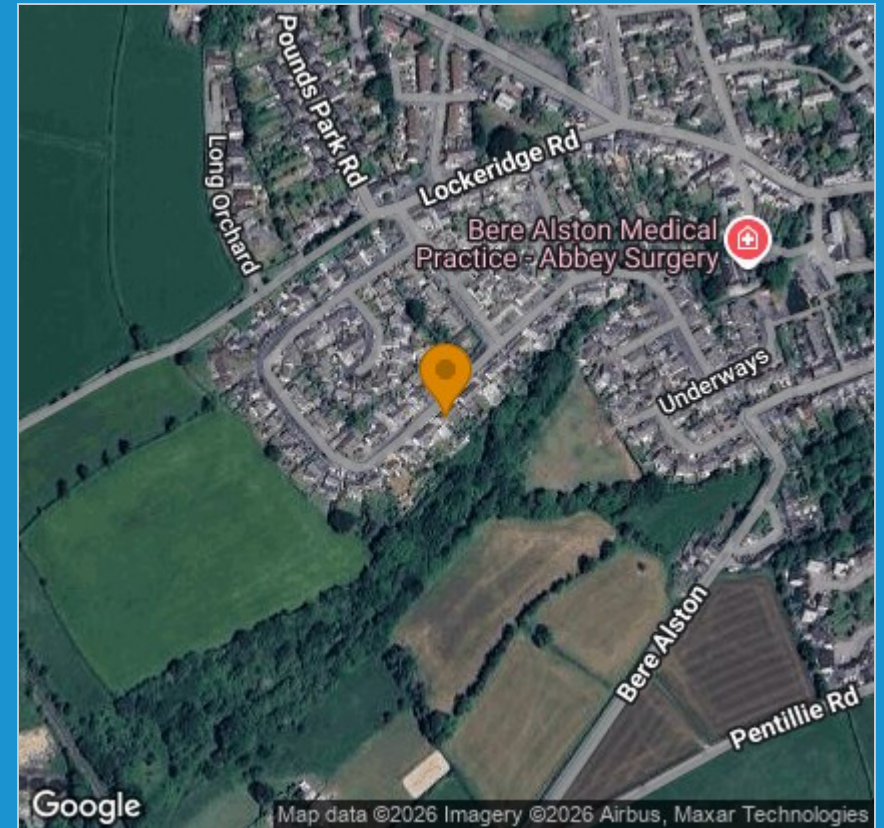
Viewing

Please contact our View Property Tavistock Office on 01822 614614 if you wish to arrange a viewing appointment for this property or require further information.

These particulars, whilst believed to be accurate are set out as a general outline only for guidance and do not constitute any part of an offer or contract. Intending purchasers should not rely on them as statements of representation of fact, but must satisfy themselves by inspection or otherwise as to their accuracy. No person in this firm's employment has the authority to make or give any representation or warranty in respect of the property.

Unit 1, The Old Dairy Paddons Row, Tavistock, Devon, PL19 0HF
Tel: 01822 614614 Email: Tavy@viewproperty.org.uk www.viewproperty.org.uk

Area Map



Energy Efficiency Graph

