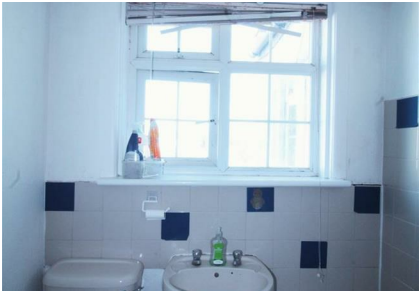


Castle Lane West, Muscliff, Bournemouth, Dorset, BH8 9TG

£1,300 Per Month

Council Tax Band: A



Nestled in the charming area of Muscliff, Bournemouth, this delightful flat offers a perfect blend of comfort and convenience. With two well-proportioned bedrooms, this property is ideal for small families, couples, or individuals seeking a peaceful retreat. The flat features a welcoming reception room, providing a warm space for relaxation or entertaining guests.

One of the standout features of this property is its prime location. It is situated just a short stroll away from both primary and secondary schools, making it an excellent choice for families with children. Additionally, the flat is conveniently located within a 25 to 30-minute walk to JP Morgan, making it an attractive option for professionals working in the area.

For those who enjoy shopping and leisure activities, the nearby Castle Point and Mallard Road Shopping Centre are easily accessible on foot. Here, you will find a variety of shops, cafes, and amenities to cater to your everyday needs.

This flat presents a wonderful opportunity to enjoy a comfortable lifestyle in a sought-after location. With its proximity to schools, workplaces, and shopping facilities, it is a property that truly offers the best of both worlds. Whether you are looking to buy or rent, this flat in Muscliff is certainly worth considering.



Open House Bournemouth



Energy Efficiency Rating		
	Current	Potential
Very energy efficient - lower running costs		
(92 plus) A		
(81-91) B		
(69-80) C		
(55-68) D		
(39-54) E		
(21-38) F		
(1-20) G		
Not energy efficient - higher running costs		
England & Wales	EU Directive 2002/91/EC	