



Kensington Church Street, W8

£4,250 Per calendar month

Two bedroom split level flat in this traditional period conversion. A beautiful property which has plenty of living space including a private roof terrace. Ideal for either a single professional or a couple.

Perfectly positioned between Kensington High Street and Notting Hill Gate with its array of boutiques, restaurants and café's along Kensington Church Street and Hyde Park is within short walking distance.

Features

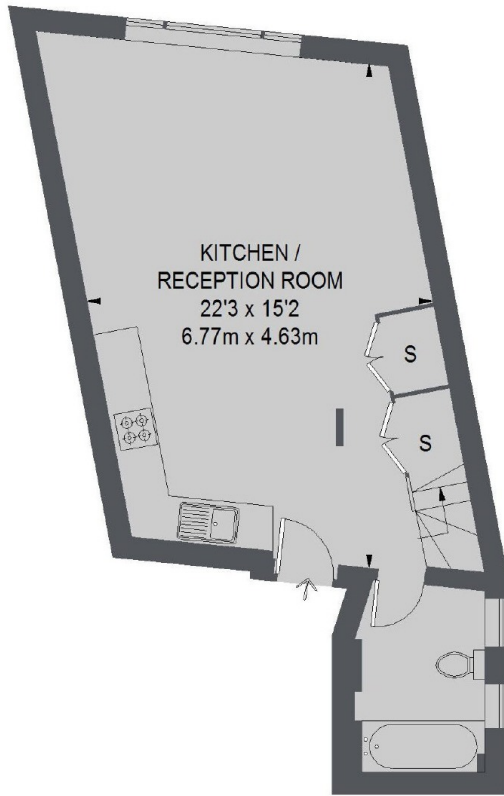
- Two Double Bedrooms
- Split Level
- Open Plan Kitchen
- Roof Terrace
- Private Entrance
- Notting Hill Underground



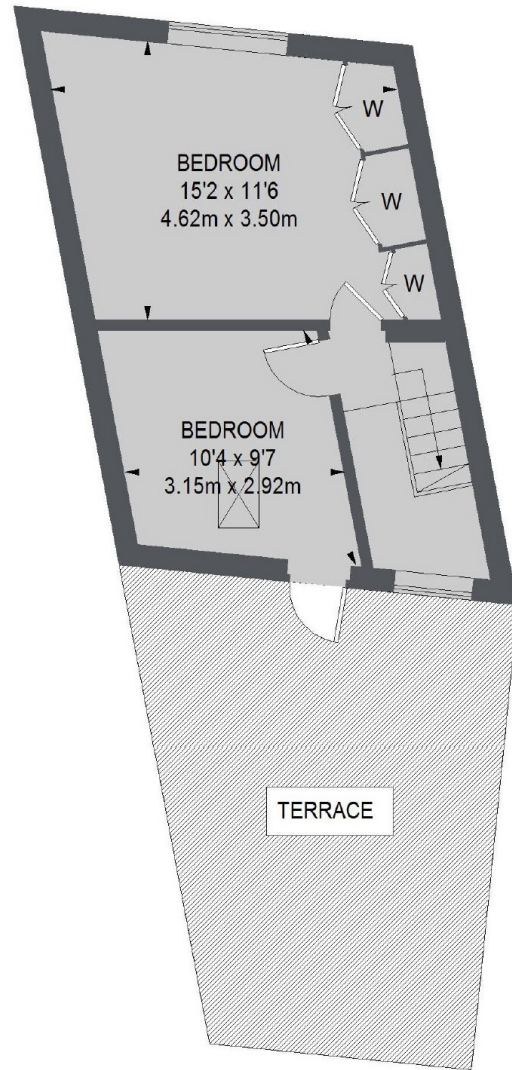
Kensington Church Street, W8



Kensington Church Street, London, W8



FIRST FLOOR



SECOND FLOOR

TOTAL APPROX. FLOOR AREA 743 SQ. FT. (69.07 SQ. M.)