



PROPERTY  
SERVICES  
LIMITED



## 272 Mitchell Avenue , Coventry, CV4 8DW

£500 Per Calendar Month



**\*\*ZERO DEPOSIT OPTION AVAILABLE\*\***

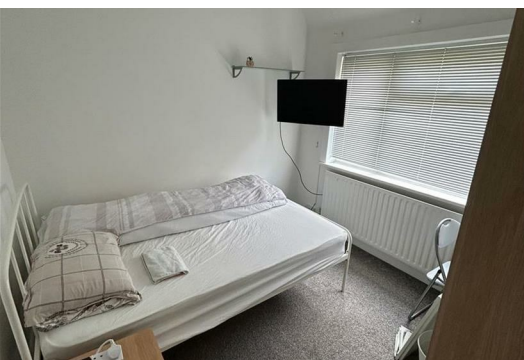
SHARED ACCOMMODATION – SINGLE OCCUPANCY ONLY

A well-presented, fully furnished double bedroom is available in a spacious 5-bedroom house share located in the popular Canley area, within easy reach of local amenities and transport links.

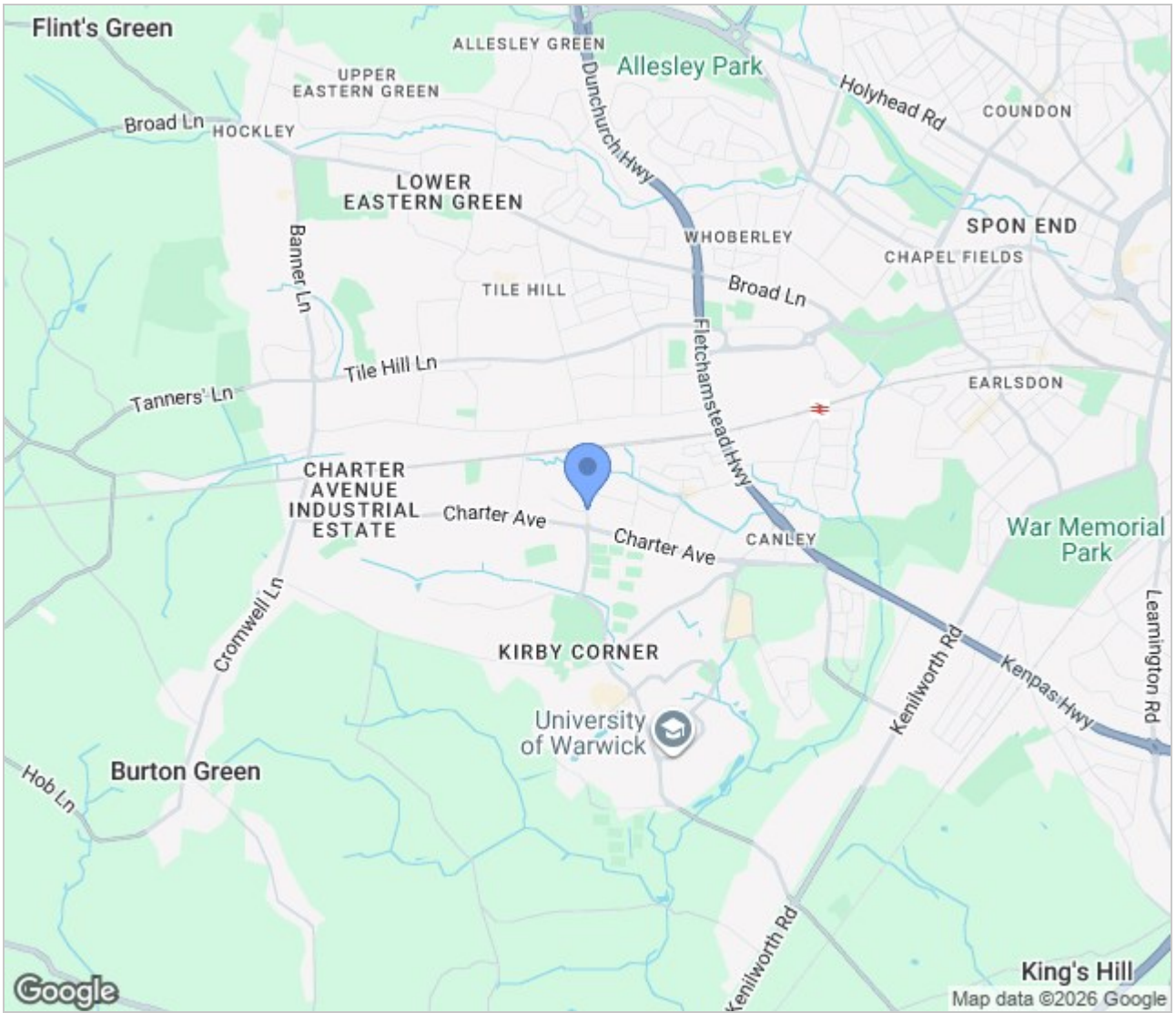
The room is situated on the first floor, offering convenient access to a modern bathroom. The property is ideal for a working professional or student seeking comfortable shared accommodation.

### Key Features:

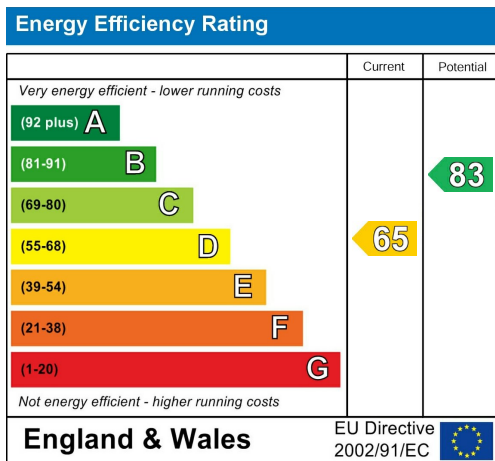
- First floor double bedroom
- Fully furnished
- Ground floor shower room
- First floor bathroom
- Large, fully equipped kitchen
- Spacious communal lounge



## Area Map



## Energy Efficiency Graph



These particulars, whilst believed to be accurate are set out as a general outline only for guidance and do not constitute any part of an offer or contract. Intending purchasers should not rely on them as statements of representation of fact, but must satisfy themselves by inspection or otherwise as to their accuracy. No person in this firm's employment has the authority to make or give any representation or warranty in respect of the property.

GLB Property Services Ltd  
9 Hay Lane  
Coventry, CV1 5RJ

T. 02476 433416

info@glbpropertyservices.com  
www.glbpropertyservices.com

