



## Haverstock Hill, NW3

£4,000 Per calendar month

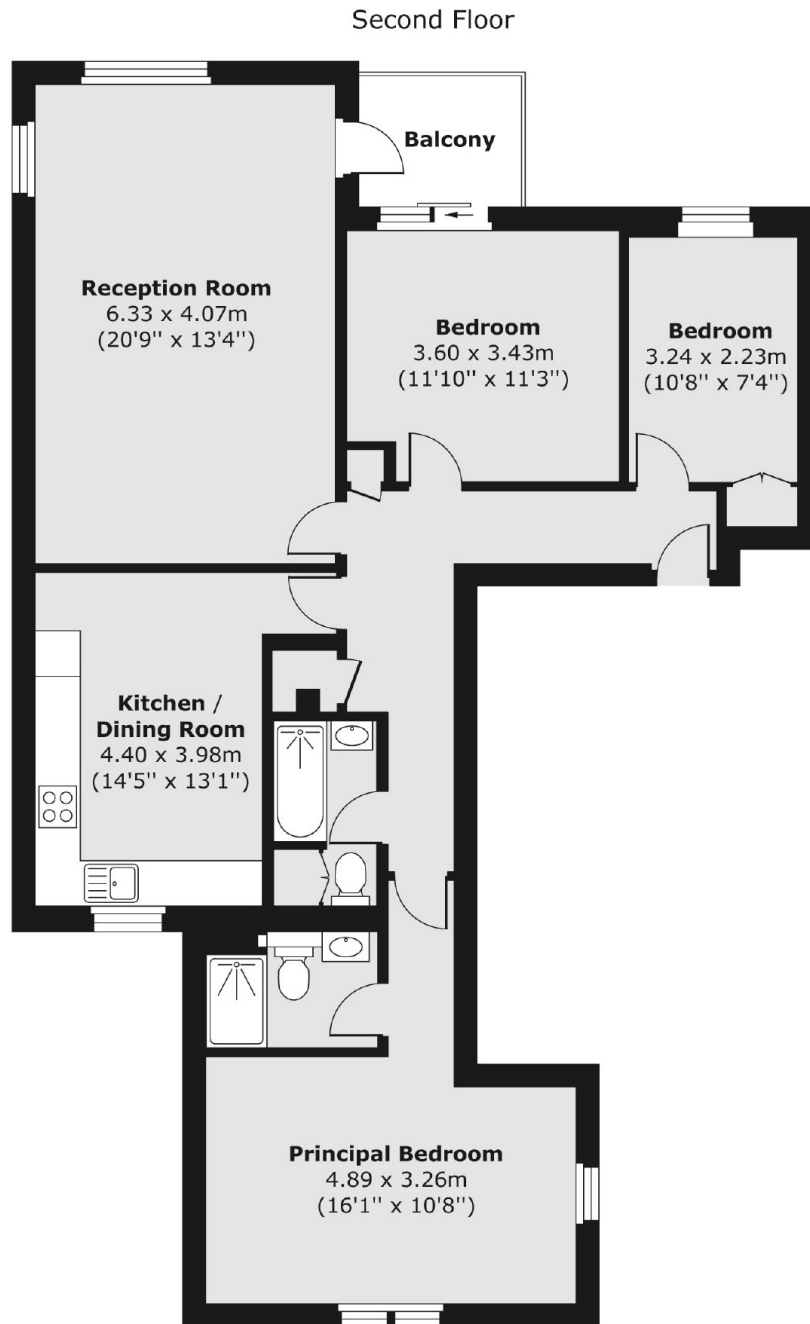
A recently refurbished three double bedroom flat with two bathrooms located on the second floor of a purpose build block with lift. Wooden floors throughout, separate eat-in kitchen, balcony and access to communal gardens.

The flat is located short walk away from Belsize Park Station giving you quick access to the City and Central London on the Northern Line

### Features

- Three Double Bedrooms
- Large Reception Room
- Two Bathrooms
- Lift Access
- Parking
- Communal Gardens

# Haverstock Hill, London, NW3



Total area (approx.) 98.32 sq. m (1,058 sq. ft)  
Balcony area (approx.) 3.71 sq. m (40 sq. ft)