



43 King Edward Road

Tickhill, Doncaster, DN11 9NU

Asking Price £225,000

Nestled in the charming area of King Edward Road in Tickhill, this delightful semi-detached house offers a perfect blend of comfort and style. With three well-proportioned bedrooms, this property is ideal for families or those seeking extra space. The inviting reception room provides a warm and welcoming atmosphere, perfect for relaxation or entertaining guests.

The house has been recently decorated and features some new flooring, ensuring a fresh and modern feel. The well-presented interiors create a lovely environment that you can easily make your own.

One of the standout features of this property is the beautifully landscaped rear garden, which is fully enclosed, providing a safe and private space for children to play or for you to enjoy outdoor gatherings.

The location itself is highly desirable, offering a friendly community atmosphere while being conveniently close to local amenities and transport links. Early viewing is highly recommended.

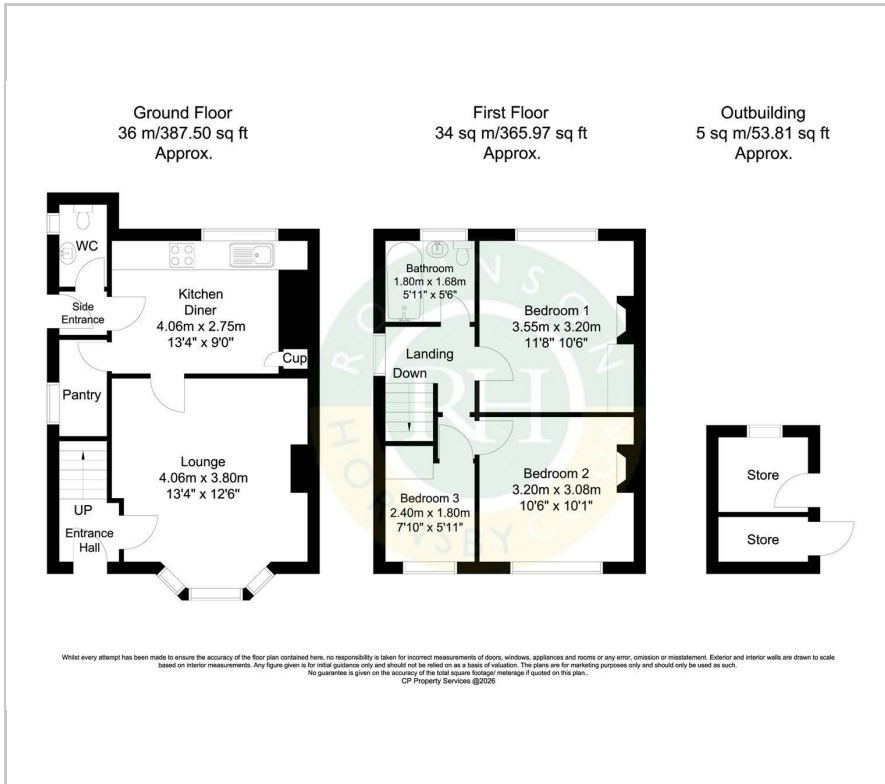
- Semi detached house
- Three bedrooms
- Modern fitted kitchen/breakfast room
- Utility and downstairs WC
- Family bathroom with white suite
- Newly fitted carpets and decor to some rooms
- Driveway and garage
- Well presented throughout
- Landscaped rear enclosed garden
- Close to reputable schools, local amenities and transport links

Viewing

Please contact our Office on 01302 751616 if you wish to arrange a viewing appointment for this property or require further information.



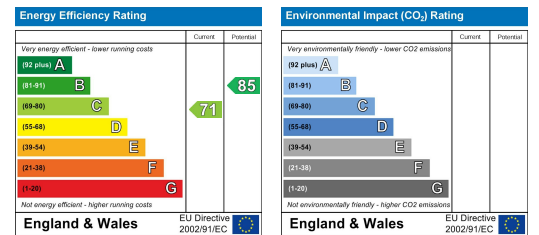
Floor Plan



Area Map



Energy Efficiency Graph



These particulars, whilst believed to be accurate are set out as a general outline only for guidance and do not constitute any part of an offer or contract. Intending purchasers should not rely on them as statements of representation of fact, but must satisfy themselves by inspection or otherwise as to their accuracy. No person in this firm's employment has the authority to make or give any representation or warranty in respect of the property.