

Hythe Road, KT6

£425,000

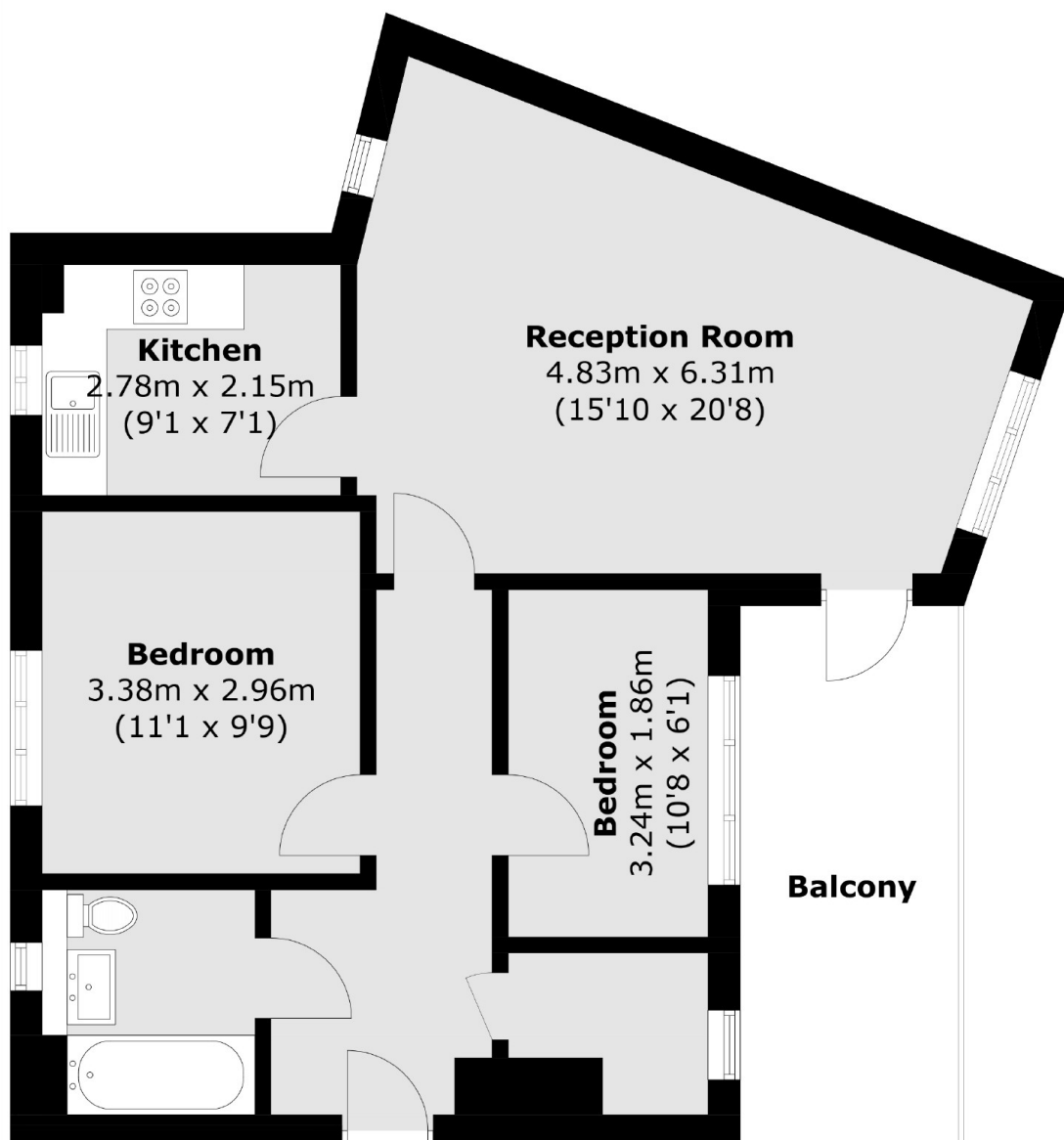
This modern top floor two bedroom apartment is located in a peaceful location in central Surbiton. The property has a spacious living room with dining area, modern separate kitchen, two double bedrooms, a good sized bathroom and a private balcony with panoramic views of Surbiton and beyond. The property further benefits from a lift, allocated parking and no onward chain.

Hythe Road is a quiet and peaceful road tucked away just 0.1 miles from Surbiton train station with it's fast links into London. The high street with its bars, cafes restaurants, bus stops and shops is just 0.2 miles away.

Features

Well Presented
Top Floor with Lift
Close To Station
Two Double Bedrooms
Private Balcony
Allocated Parking

Hythe Road, Surbiton, KT6



Total area (approx.): 62.2 sq. m (669.5 sq. ft)
Balcony area (approx.): 10.2 sq. m (109.7 sq. ft)

Dexters

Surbiton
4 Claremont Road
Surbiton
KT6 4QU
Sales
020 8390 3939

Energy Rating: B. We aim to make our particulars both accurate and reliable. However they are not guaranteed; nor do they form part of an offer or contract. If you require clarification on any points then please contact us, especially if you're traveling some distance to view. Please note that appliances and heating systems have not been tested and therefore no warranties can be given as to their good working order.

 **RICS** | Regulated
Estate Agent
and Letting Agent

[dexters.co.uk](https://www.dexters.co.uk)