



3 Birchleigh Close, Onchan, Isle Of Man, IM3 4EX
£395,000



3 Birchleigh Close, Onchan, Isle Of Man, IM3 4EX

- 3 Bedroom, Semi Detached house
- Large Driveway
- Rear Decked Garden with Versatile Powered Outhouse
- High Spec, Modern Open Plan Kitchen
- Newly Fitted, Generous Family Bathroom with Large Bath and Shower
- Garage
- Sought-after Residential Location in Onchan



3 Birchleigh Close, Onchan, Isle Of Man, IM3 4EX

Deanwood are delighted to offer for sale 3 Birchleigh Close, a beautifully renovated three-bedroom semi-detached home finished to an exceptional standard throughout, a truly turn-key home.

The ground floor centres around a stunning high-spec open-plan kitchen, dining and living space, thoughtfully designed to suit modern family living and entertaining. This impressive area is complemented by a contemporary media wall incorporating a sleek electric fire, creating a warm and stylish focal point. The floor further benefits from a separate utility room, a cosy snug with doors opening directly onto the rear garden and patio, and a convenient downstairs WC, making excellent use of the space. The property has been tastefully and cohesively decorated throughout, with a real emphasis on quality, comfort and attention to detail.

Upstairs, the property offers three well-proportioned bedrooms and a newly fitted, generously sized family bathroom, featuring a large bath and separate shower, finished with modern fittings and tiling.

Externally, the rear garden is a particularly attractive feature, enjoying decking ideal for outdoor entertaining, along with a charming outhouse, earning it's title of "A Pocket of Paradise." Fitted with electricity, this versatile space is perfectly suited for use entertaining, a home office or gym.

The property further benefits from a garage and a large driveway providing ample off-road parking for a busy family.

Viewing is highly recommended to fully appreciate the quality, finish and lifestyle this property affords; an opportunity of this calibre in such a sought-after location should not be missed.











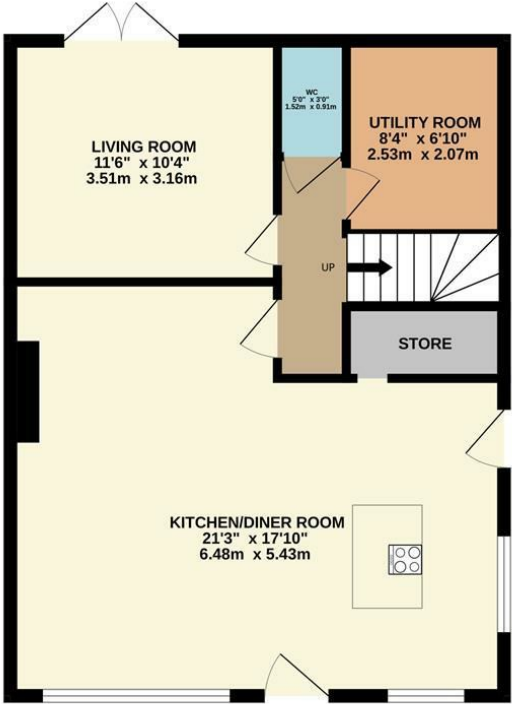


3 Birchleigh Close, Onchan, Isle Of Man, IM3 4EX

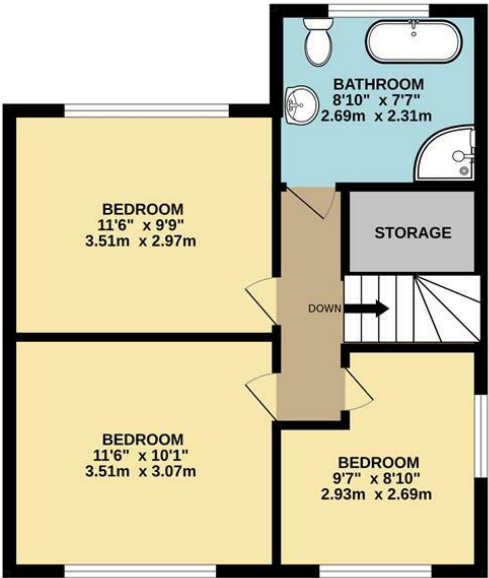


3 Birchleigh Close, Onchan, Isle Of Man, IM3 4EX

GROUND FLOOR
732 sq.ft. (68.0 sq.m.) approx.



1ST FLOOR
441 sq.ft. (41.0 sq.m.) approx.



TOTAL FLOOR AREA : 1173 sq.ft. (109.0 sq.m.) approx.
Not to scale-for identification purposes only
Made with Metropix ©2026



DOUGLAS
37 VICTORIA STREET
DOUGLAS
ISLE OF MAN IM1 2LF
T 01624 620606
F 01624 677363
E info@deanwood.co.im

CASTLETOWN
COMPTON HOUSE
9 CASTLE STREET CASTLETOWN
ISLE OF MAN IM9 1LF
T 01624 825995
F 01624 825996
E castletown@deanwood.co.im

RAMSEY
LEZAYRE HOUSE
87 PARLIAMENT STREET
RAMSEY ISLE OF MAN IM8 1AQ
T 01624 816111
F 01624 816588
E ramsey@deanwood.co.im

These particulars are for information purposes only. They do not constitute or form any contract nor should any statement contained herein be relied upon as a representation of fact. Neither the vendor nor DeanWood Agencies Limited ('the firm'), nor any officer or employee of the firm accept liability or responsibility for any statement contained herein. The vendor does not by these particulars, nor does the firm, nor does any officer or any employee of the firm have any authority to make or give any representation or warranty whatsoever as regards the property or otherwise. It is the sole responsibility of any person interested in the property described in these particulars to make all proper enquiries and searches to verify the description of the property and all other particulars herein.

FOR MORE PROPERTIES VISIT OUR WEBSITE @ deanwood.im