



# Chevening Road

Greenwich, SE10

Asking Price £1,200,000

This beautifully presented three-storey family home offers a bright through lounge and a modern fitted kitchen, with stylish interiors throughout. Backing directly onto East Greenwich and within the catchment of Halstow Primary School.

**CHESTERTONS**



# Chevening Road

## Greenwich, SE10

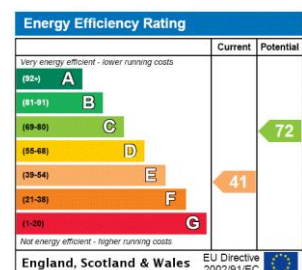
- Attractive four-bedroom Victorian home in Greenwich
- Walking distance to Westcombe Park station
- Spacious double reception with bay windows
- Modern kitchen diner with integrated appliances
- Three double bedrooms with fitted wardrobes
- Converted loft bedroom with ensuite shower
- Juliet balcony overlooking green space nearby
- Close to Halstow Primary School location



Located within easy walking distance of Westcombe Park station, this attractive four-bedroom Victorian house sits in the leafy heart of Greenwich and is well positioned for the highly regarded Halstow Primary School. Arranged across three well-proportioned floors, the property offers generous and flexible living space throughout. The ground floor features a spacious double reception room, complete with a character fireplace and elegant bay windows with wooden shutters, creating a bright and welcoming setting. To the rear, the modern kitchen diner is well equipped with integrated appliances, making it ideal for both everyday family living and entertaining, while a large storage cupboard and ground floor WC add further practicality.

The first floor comprises three well-sized double bedrooms, all benefiting from fitted wardrobes, alongside a contemporary family bathroom. The top floor hosts a thoughtfully converted loft bedroom, providing an impressive fourth bedroom with built in wardrobes, an ensuite shower room and useful eaves storage. A Juliet balcony enjoys pleasant views across nearby green space and the recreation park. Overall, this is a superb family home in a highly desirable Greenwich location, offering a balance of character, space and convenience, with excellent transport links, well regarded schooling and a strong sense of community that continues to attract buyers to the area. Perfectly suited to growing families seeking comfort, style and long term practicality.

**Tenure:** Freehold  
**Service Charge:** £0  
**Ground Rent:** £0  
**Local Authority:** Royal Borough Of Greenwich  
**Council Tax Band:** E



### Chestertons Surrey Quays Sales

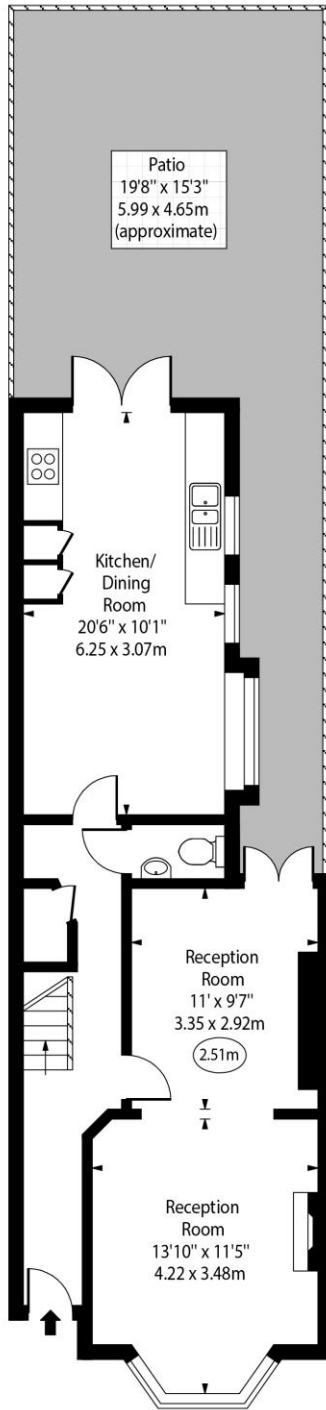
2 Plough Way  
 London  
 SE16 2EU

+44 (0)20 7378 0644  
 chestertons.co.uk

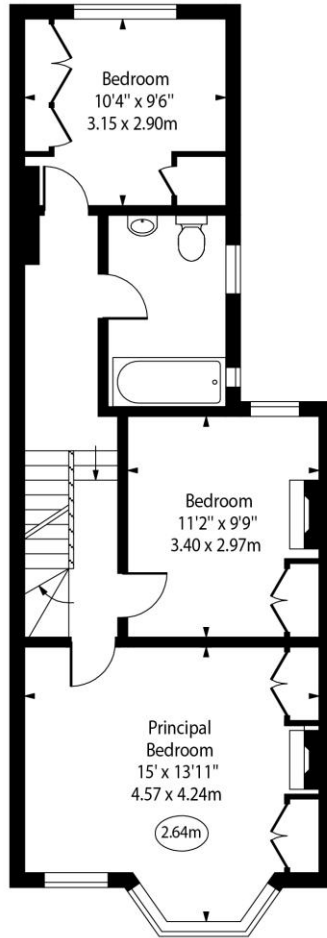
Chevening Road, SE10



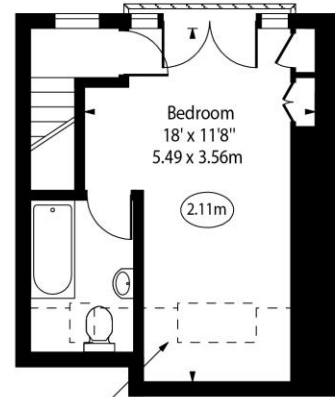
○ - Ceiling Height



Ground Floor



First Floor



Second Floor

Approx Gross Internal Area 1376 Sq Ft - 127.83 Sq M

Approx. Floor Area Including Restricted Heights 1416 Sq Ft - 131.55 Sq M

For Illustration Purposes Only - Not To Scale  
www.goldlens.co.uk  
Ref. No. 026059K

Chesterton UK Services Limited trading as Chestertons for themselves and for the vendor of this property whose agents they are, give notice that (i) these particulars do not constitute any part of an offer or contract, (ii) all statements contained within these particulars are made without responsibility on the part of Chestertons or the vendor, (iii) whilst made in good faith, none of the statements contained within these particulars are to be relied upon as a statement or representation of fact, (iv) any intending purchasers must satisfy themselves by inspection or otherwise as to the correctness of each of the statements contained within these particulars, (v) the vendor does not make or give either Chestertons or any person in their employment any authority to make or give representation or warranty whatsoever in relation to this property. Wide angle lenses may be used. ©Copyright Chestertons | Chesterton UK Services Limited | Registered Office 5th Floor, The Lantern, 75 Hampstead Road, London, NW1 2PL Registered Company Number 05334580.



This paper is 100% recyclable