



Guide Price

£310,000

Freehold

3x  1x  2x 

**Chatfield Lodge,
Newport, Isle of Wight,
PO30**

OVER 60?

Secure this property
for up to **59% less!**

Pittis 
Helping you move forwards



Main features

- Split level bungalow adapted for disabled use
- Situated in a quiet area within easy reach of the town
- Spacious accommodation with a flexible layout
- Good sized garden to the rear
- Large plot with plenty of parking

Accommodation

GROUND FLOOR

Hall

Bedroom 3: 10'3 x 6'9 (3.13m x 2.06m)

Bedroom 1: 11'1 x 9'9 (3.38m x 2.97m)

Lounge: 18'0 x 18'0 (5.49m x 5.49m)

Kitchen: 12'7 x 8'5 (3.84m x 2.57m)

Side Porch

Dining Room: 15'9 x 8'6 (4.80m x 2.59m)

Bedroom 2: 10'3 x 9'1 (3.13m x 2.77m)

Wet Room

OUTSIDE

Front Garden

Rear Garden

Driveway

Outside Lift

LOWER GROUND FLOOR

Garage

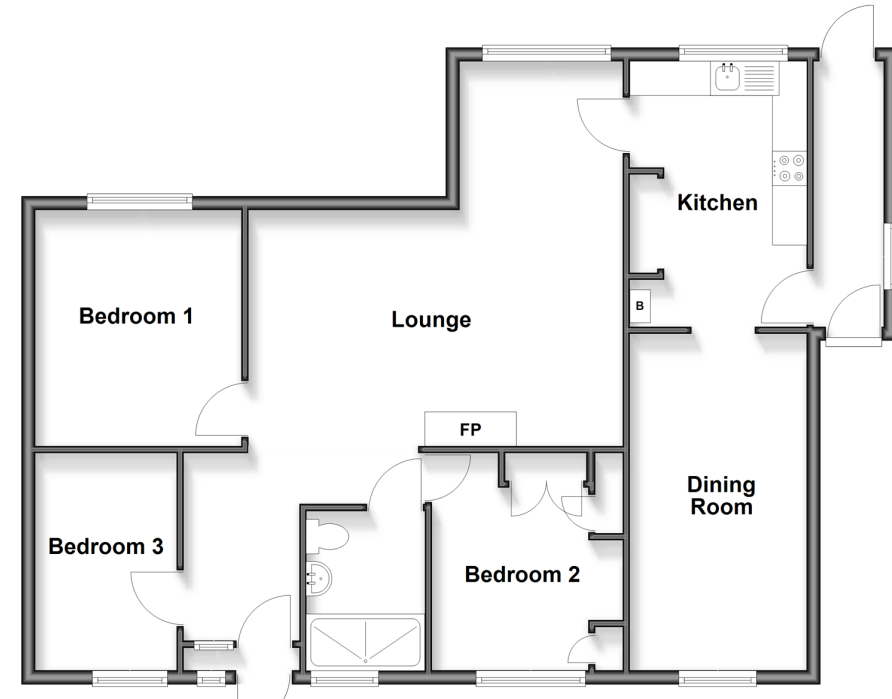
Lower Ground Floor

Approx. 12.6 sq. metres (135.3 sq. feet)



Ground Floor

Approx. 90.2 sq. metres (971.2 sq. feet)



Call Newport - 01983 528888 ■ pittis.co.uk

- Legal advice should be taken to verify fixtures/fittings, planning, alterations and/or lease details
- Appliances & services are untested, dimensions are approximate and floor plans are not to scale
- Through a Homewise Home For Life Plan people aged 60+ can secure this property for up to 59% less, by purchasing a Lifetime Lease



60323356/20260218/MB/SC