

Wymering Road, W9

£850,000

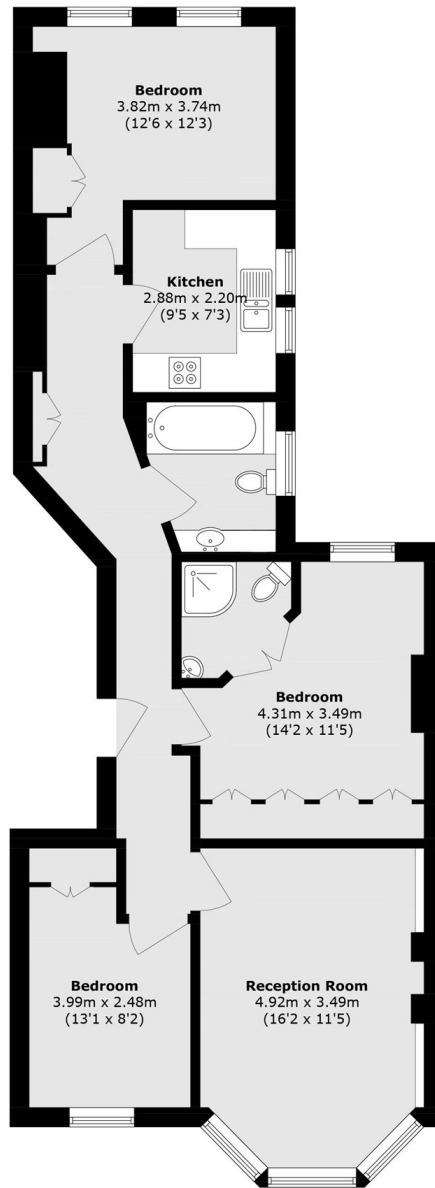
A spacious third floor flat set in one of Maida Vale's iconic red brick mansion blocks. This well-presented property comes complete with a sizable reception, three double bedrooms, one of which includes an en suite, modern separate kitchen and sash windows throughout.

Wymering Road is ideally located in the heart of Maida Vale, providing fantastic access for Maida Vale and Warwick Avenue underground stations (Bakerloo line), Paddington Recreation Ground as well as a number of local shops and cafés.

Features

- Red Brick Mansion
- Communal Gardens
- Two Bathrooms
- Three Double Bedrooms
- Great Transport Links
- Chain Free

Wymering Road, Maida Vale, W9



Third Floor

Total area (approx.): 77.0 sq. m (828.8 sq. ft)