



Mutton Place

Kentish Town, NW1

£3,850 per month
(£888.46 per week)

We are delighted to offer this three bedroom newly refurbished property. Comprising of three double bedrooms, study, delightful eat in kitchen, spacious reception leading on to a delightful private garden.

CHESTERTONS



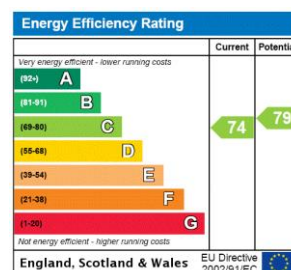
Mutton Place

Kentish Town, NW1

•



Minimum Term: months
Deposit Required: £0.00
Local Authority:
Council Tax Band:
EPC Rating: C
Furnished



Chestertons Camden & Primrose Hill Lettings

99-101 Parkway
 London
 NW1 7PP
camden@chestertons.co.uk
 02072673574
chestertons.co.uk

Additional tenant charges apply (fees apply to non-AST tenancies only)
 Tenancy Agreement Fee: £300
 References per Tenant/Guarantor: £60
 Inventory check (approx. £100 – £250 inc. VAT)
chestertons.co.uk/property-to-rent/applicable-fees

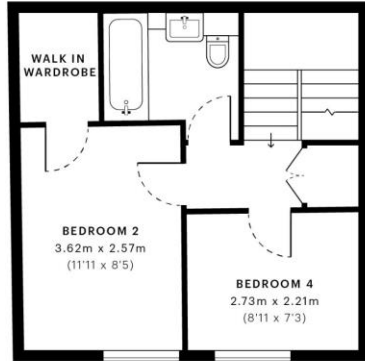


Mutton Place, NW1

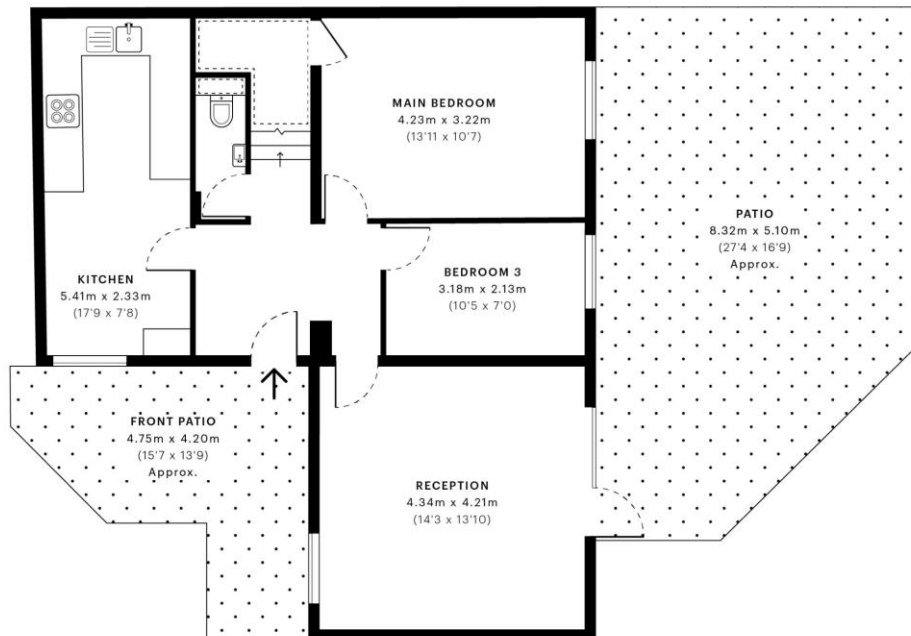
CAPTURE DATE 15/08/2022 LASER SCAN POINTS 66,441,538

GROSS INTERNAL AREA

94.60 sqm / 1018.27 sqft



— First Floor



— Ground Floor

GROSS INTERNAL AREA (GIA)
The footprint of the property
94.60 sqm / 1018.27 sqft

NET INTERNAL AREA (NIA)
Excludes walls and external features
Includes washrooms, restricted head height
86.57 sqm / 931.83 sqft

EXTERNAL STRUCTURAL FEATURES
Balconies, terraces, verandas etc.
0.00 sqm / 0.00 sqft

RESTRICTED HEAD HEIGHT
Limited use area under 1.5 m
2.72 sqm / 29.28 sqft



Spec Verified floor plans are produced in accordance with Royal Institution of Chartered Surveyors' Property Measurement Standards. Plots and gardens are illustrative only and excluded from all area calculations. Due to rounding, numbers may not add up precisely. All measurements shown for the individual room lengths and widths are the maximum points of measurements captured in the scan.

IPMS 3B RESIDENTIAL 90.90 sqm / 978.44 sqft
IPMS 3C RESIDENTIAL 86.61 sqm / 932.26 sqft

SPEC ID 62f13d6aa7a3680e2ec97a35

Chesterton Global Ltd trading as Chesterton's for themselves and for the vendor of this property whose agents they are, give notice that (i) these particulars do not constitute any part of an offer or contract, (ii) all statements contained within these particulars are made without responsibility on the part of Chesterton's or the vendor, (iii) whilst made in good faith, none of the statements contained within these particulars are to be relied upon as a statement or representation of fact, (iv) any intending purchasers must satisfy themselves by inspection or otherwise as to the correctness of each of the statements contained within these particulars, (v) the vendor does not make or give either Chesterton's or any person in their employment any authority to make or give representation or warranty whatsoever in relation to this property. Wide angle lenses may be used. ©Copyright Chesterton's | Chesterton Global Ltd | Registered Office 40 Connaught Street, Hyde Park, London W2 2AB Registered Company Number 05334580.



This paper is
100% recyclable