



9,, Bluecoat Court, Hertford
SG14 1AY
Guide Price £315,000



stevenoates.com



9, Bluecoat Court, Hertford, Herts, SG14 1AY

Welcome to this spacious and larger than average two-bedroom apartment located in the heart of Hertford, specifically at Bluecoat Court. This delightful property offers a perfect blend of modern living and convenience, making it an ideal choice for both first-time buyers and those looking to downsize.

Nestled in a quiet yet accessible position, the apartment is just a stone's throw away from all the amenities Hertford has to offer. Additionally, Hertford East Train Station is within easy reach, providing excellent transport links for commuters. The apartment boasts a contemporary design, featuring an upgraded kitchen and bathroom that enhance the overall living experience. The layout creates a sense of space and light, making it perfect for entertaining guests or enjoying a quiet evening at home.

One of the standout features of this property is the allocated parking, a rare find in town centre locations, ensuring that you have a secure and convenient place for your vehicle. Furthermore, the long lease adds to the appeal, providing peace of mind for future living. In summary, this two-bedroom apartment at Bluecoat Court is a fantastic opportunity to enjoy modern living in a prime location. Do not miss the chance to make this charming apartment your new home.

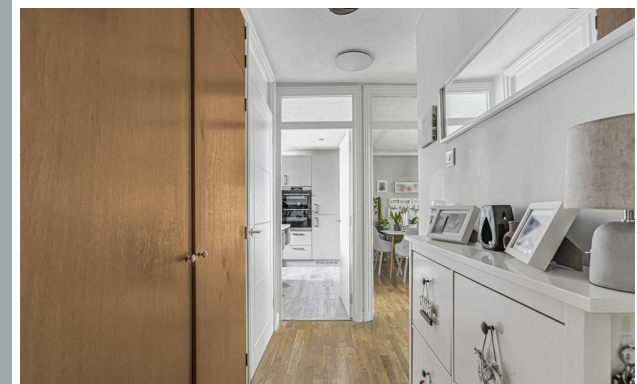
Bluecoat Court is situated near to Hertford East Train Station which offers a regular service to both London's Tottenham Hale & Liverpool Street stations, the property is also near to Hertford North Station which is only (1.0m) away on foot serving regular trains to Moorgate. This development is only a short stroll away from Hertford Town Centre which offers a wide range of restaurants, coffee shops, bars and much more. Hartham Common and the River Lea is less than a minute away which has a range of facilities available including the local leisure centre, Hartham grounds and woods, tennis courts, kayaking and a skatepark. Also close by is a superstore and a useful industrial park.



70 Fore Street, Hertford, Hertfordshire, SG14 1BY

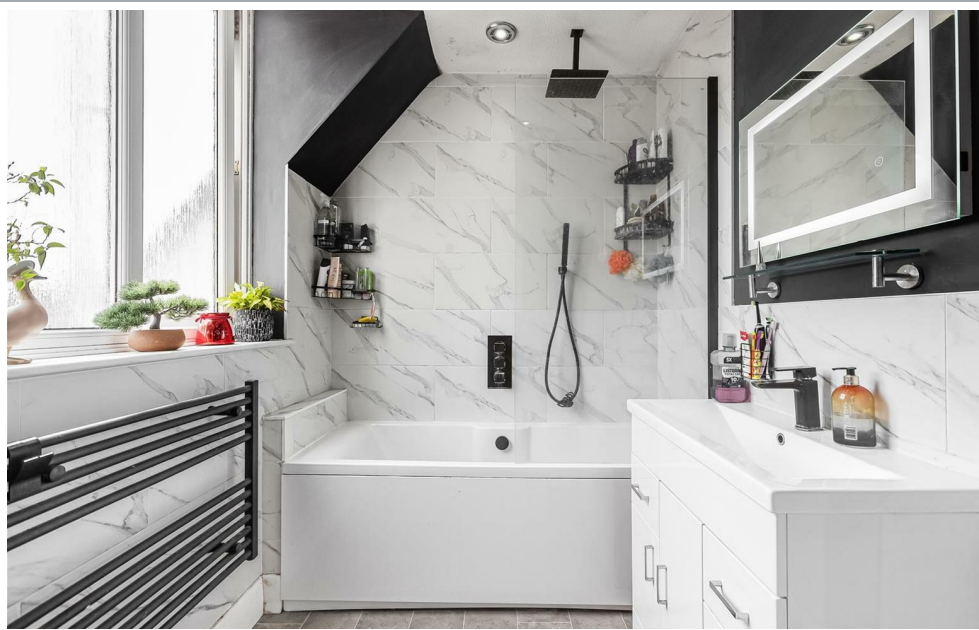
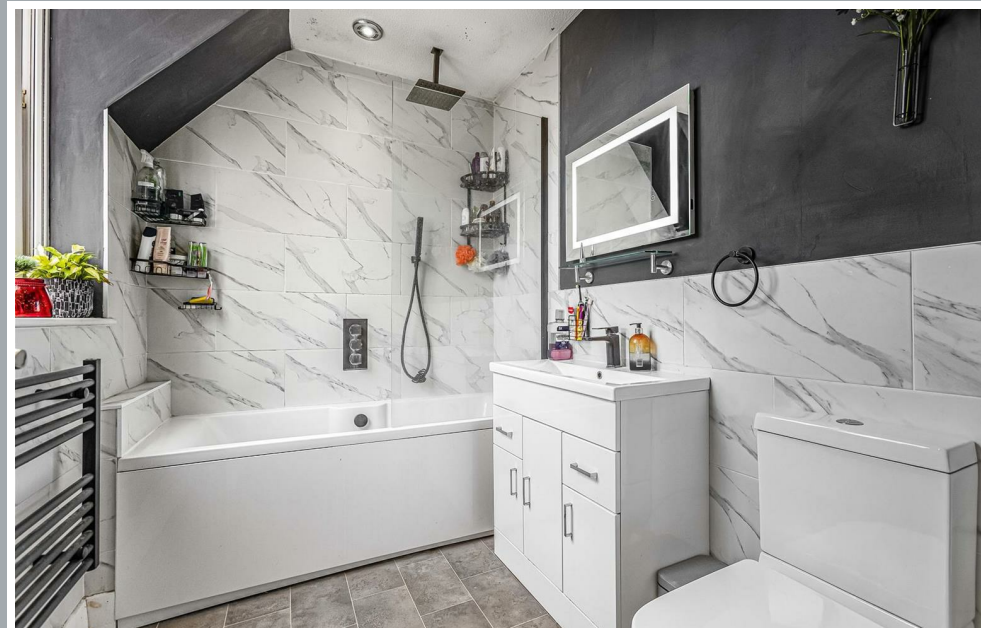
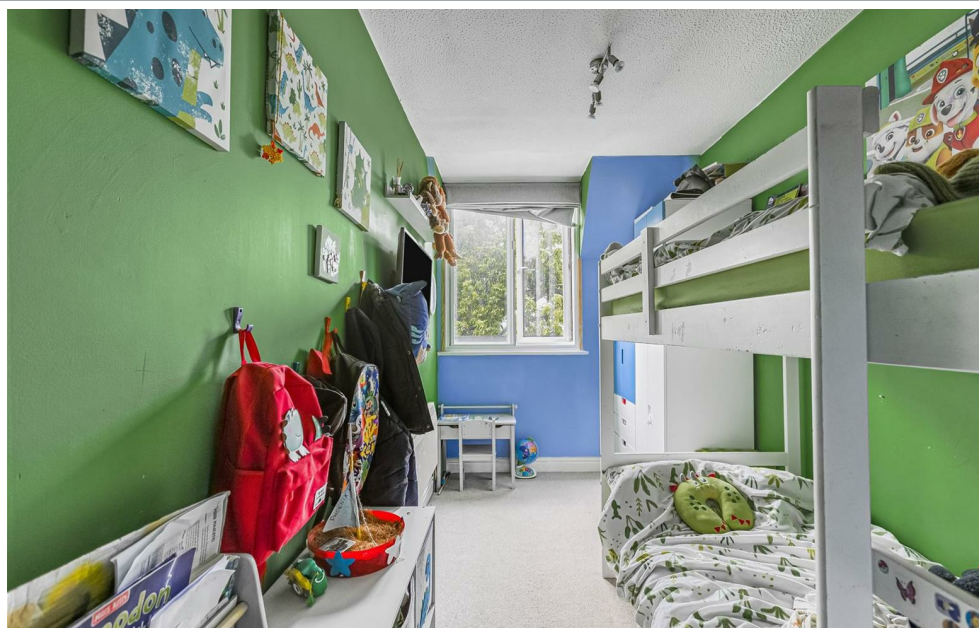


70 Fore Street, Hertford, Hertfordshire, SG14 1BY



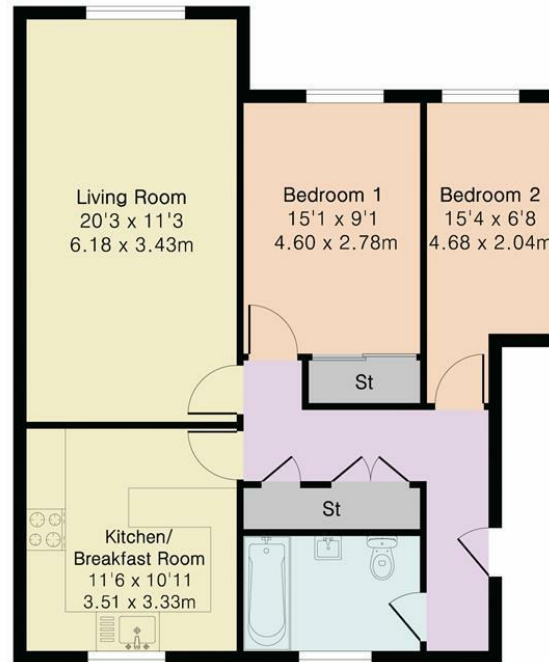
70 Fore Street, Hertford, Hertfordshire, SG14 1BY





70 Fore Street, Hertford, Hertfordshire, SG14 1BY

Approximate Gross Internal Area 724 sq ft - 67 sq m



Second Floor



Floor plan produced in accordance with RICS Property Measurement 2nd Edition. Although Pink Plan Ltd ensures the highest level of accuracy, measurements of doors, windows and rooms are approximate and no responsibility is taken for error, omission or misstatement. These plans are for representation purposes only and no guarantee is given on the total square footage of the property within this plan. The figure icon is for initial guidance only and should not be relied on as a basis of valuation.



These particulars, whilst believed to be accurate are set out as a general outline only for guidance and do not constitute any part of an offer or contract. Intending purchasers should not rely on them as statements of representation of fact, but must satisfy themselves by inspection or otherwise as to their accuracy. No person in this firm's employment has the authority to make or give any representation or warranty in respect of the property.



stevenoates.com