



## Chatsworth Road, NW2

£750,000

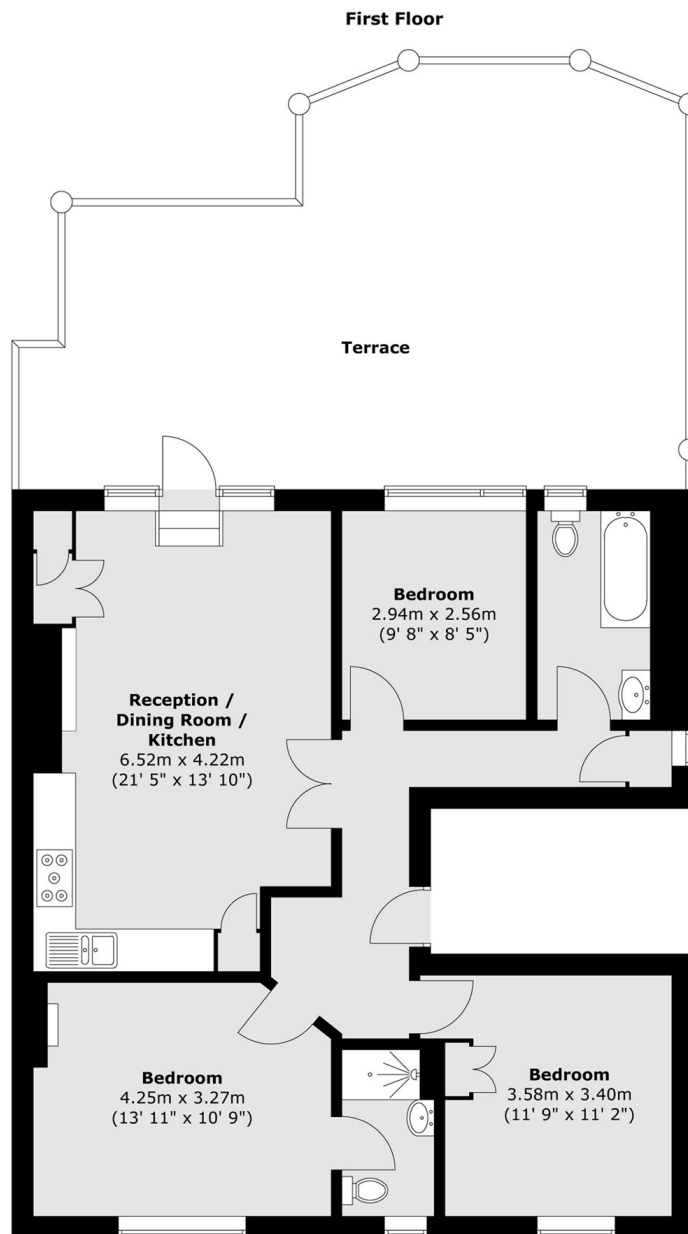
A beautifully presented three double bedroom first floor period conversion with a large private roof terrace offering a superb space. The property has an open plan living and kitchen area, two bathrooms and ample storage, including a shed. Further benefits include access to communal gardens and off street parking.

Chatsworth Road is ideally situated in the Mapesbury Estate and borders Brondesbury, Queens Park and West Hampstead. With easy access to Brondesbury Park station (Overground), Kilburn station (Jubilee line) and West Hampstead station (Thameslink)

### Features

- First Floor Flat
- Three Double Bedrooms
- Two Bathrooms
- Share Of Freehold
- Large Private Roof Terrace
- Off Street Parking

# Chatsworth Road, London, NW2



Total area (approx.) : 80.1 sq. m (862 sq. ft)  
Total terrace area (approx.) : 43.8 sq. m (471 sq. ft)