



Primrose Lodge, Cambridge

+44 (0) 1223 508050

lettings@cookecurtis.co.uk

www.cookecurtis.co.uk

A smart, studio flat in a purpose-built block just off of Victoria Road. Available for single occupancy for a full-time student only*
Inclusive of utilities. With convenient access to Cambridge City Centre as well as both

£1,050 pcm

Primrose Lodge, Cambridge
CB4 3EH



This flat is available to a single occupant who must be a full-time student at one of the universities in Cambridge, including ARU.

Primrose Street is a quiet road just off of Victoria Road. Primrose Lodge is a block of 30 flats, there is a communal living area, communal garden, bike store, bin store and social room.

This particular flat is basement level but incredibly light. It's fully furnished and includes a double bed, a desk, fitted wardrobes, bedside table, chest of drawers, TV, kitchen table and four chairs, washing machine, fridge and microwave oven. There is a modern and private ensuite shower room and a small private terrace which is accessible via glass doors in the kitchen area.



Water, electricity, internet are all included in the rent and capped at £150pcm. Any additional usage is to be reimbursed to the Landlord, by the Tenant.

Available 19 January 2026. Student only

Please refer to the 'Tenant Guide' brochure, for more information regarding the tenancy application process, referencing, terms and conditions of the holding fee and payments due before the start of the tenancy.





24sqm / 260sqft

1 bed, 1 bath, 0 recep

EPC - B / 81

Council tax band - A

Electric heating

Permit on road parking

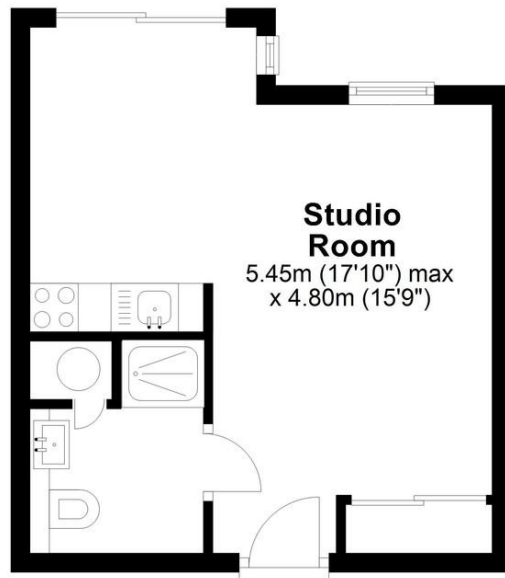
Furnished

Available January 2026

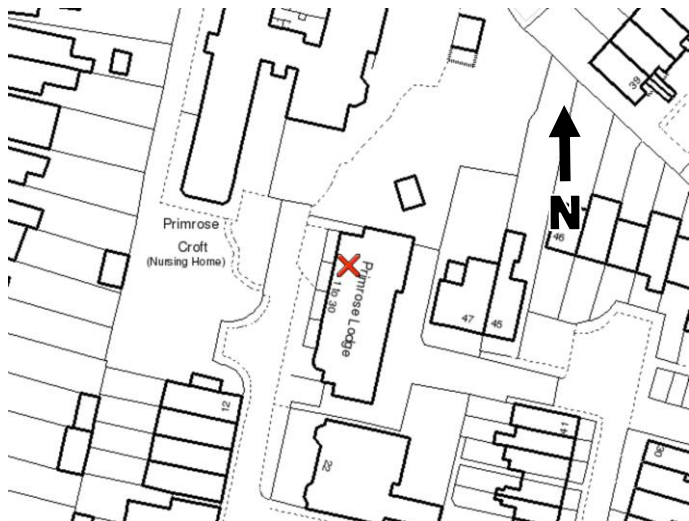


Ground Floor

Approx. 24.2 sq. metres (260.3 sq. feet)



Total area: approx. 24.2 sq. metres (260.3 sq. feet)



Victoria Road is a pleasant road within easy reach of the City centre. With many local amenities, various shops and supermarkets only a stone's throw away including the two Michelin starred Midsummer House restaurant. Castle Hill's restaurants and public houses are about half a mile away, Magdalene Street and the bustling historic City centre full of boutique shops and eateries are only around a mile away. There are a variety of cycle and bus routes on the road itself, including links to Cambridge Railway Station and the newly opened Cambridge North Station, Science Park and Biomedical Campus. Access out to the M11 and A14 is very straightforward along neighbouring Huntingdon Road or Histon Road and The University of Cambridge and Anglia Ruskin University sites are only around a mile away.

COOKE
CURTIS
& CO