



Fahren
ESTATE AGENTS

Flat 1 St Georges Court , 4 Queens Park South Drive, Bournemouth, BH8 9BL
Offers Invited £250,000 Share of Freehold

AUTHENTIC ~ PASSIONATE ~ PROFESSIONAL
Tel: 01202 551022 | Email: castlelane@fahren.co.uk | Web:
www.fahren.co.uk

Queens Park South Drive, Bournemouth

Offers Invited

Ground floor apartment in an Edwardian development | Private entrance | Character living room | Modern fitted kitchen | Two double bedroom | En-suite shower room plus modern bathroom | Double-glazed windows & gas central heating | Allocated outside parking space | Garage in a block (ideal for storage) | Sought-after Queens Park location near golf course & Wessex Way



1



Flat



2



Share of Freehold



2





Queens Park South Drive, Bournemouth
Offers Invited £250,000 Share of Freehold

Fahren

St George`s Court

Queens Park South Drive, Bournemouth

Ground Floor Apartment | Edwardian Development | Own Entrance

Fahren Estate Agents are delighted to present this beautifully appointed ground floor apartment, situated within the highly regarded Edwardian development of St George`s Court, located in the heart of the renowned Queens Park area of Bournemouth.

The apartment benefits from its own private entrance, providing a sense of independence rarely found in apartment living, and combines period character with modern convenience throughout.

Accommodation

The well-planned accommodation comprises:

- Characterful living room featuring period charm and excellent natural light
- Modern fitted kitchen, finished to a contemporary standard
- Two spacious double bedrooms
- En-suite shower room to the principal bedroom

- Modern family bathroom

Further benefits include double-glazed windows, gas-fired central heating, and well-maintained presentation throughout.

Outside & Parking

Externally, the property enjoys an allocated parking space, access to a communal area to the rear, and the added advantage of a garage in a block. The garage is ideal for storage, as vehicle access is limited.

Location

Queens Park South Drive is widely regarded as one of Bournemouth`s most desirable residential locations. The area is centred around the Queens Park Golf Course, offering beautiful green surroundings, woodland walks, and open recreational spaces.

The property is ideally positioned for easy access to Wessex Way, providing direct routes to Bournemouth Town Centre, the beach, and onward travel to the A31 and surrounding areas. Local amenities, transport links, and schooling are all conveniently close by, making this an excellent location for both owner-occupiers and downsizers alike.

Share of Freehold

Service Charge : As & when Required



If you would like to book a viewing or find out how much your property is worth please contact us

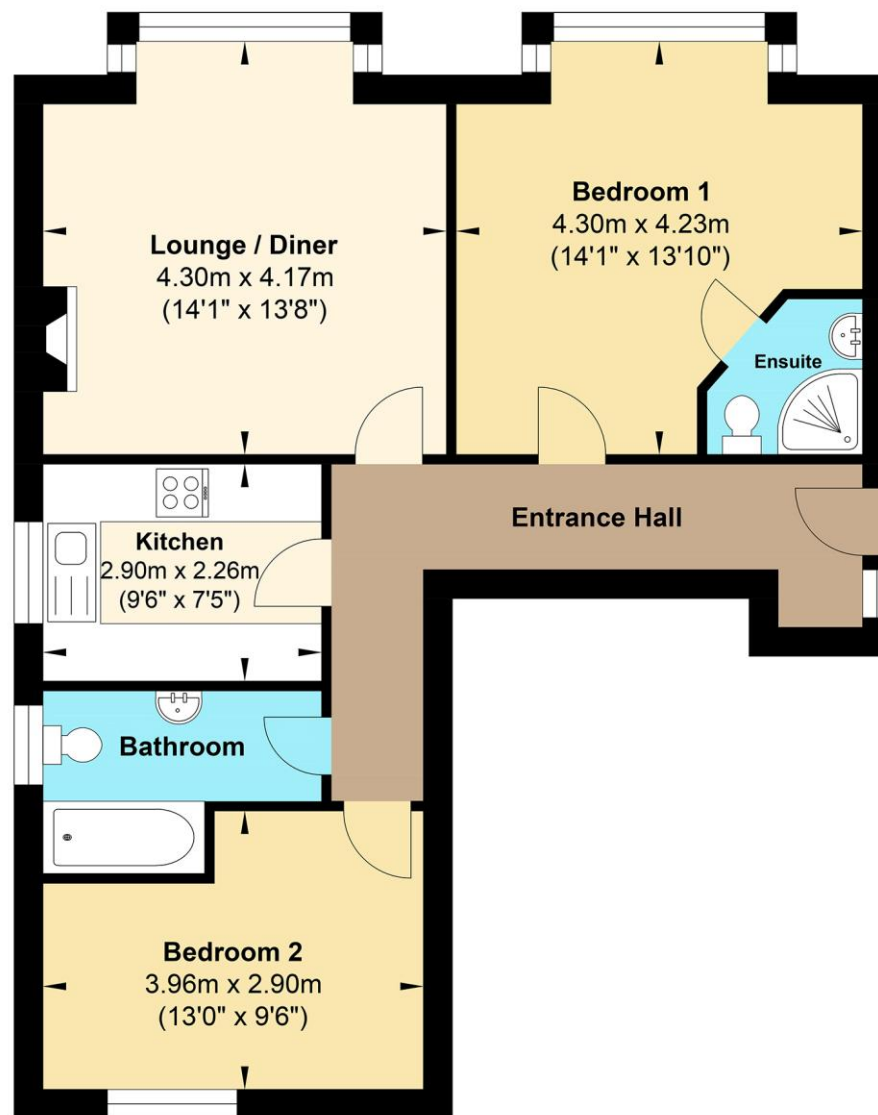
Tel: 01202 551022

Email: inf@fahren.co.uk

Web: www.fahren.co.uk







Gross Internal Floor Area : 66.26 m2 ... 713.21 ft2

This floor plan is for illustrative purposes and layout guidance only. It is not drawn to scale.
Dimensions should not be used for carpet or flooring sizes and are not intended to form part of any contract.