





£800,000



Features

- Sought After Location with Open Views and Overlooking Fields
- Three Double Bedrooms Plus Study
- Large Private South Facing Gardens
- Extended Detached and Versatile Family Home
- 23ft Open Plan Living Dining Kitchen with Underfloor Heating
- Superb Decked Sun Terrace
- Double Garage and Large Driveway
- Beautiful Fitted Kitchen with Island, Quartz Worktops and Integrated Appliances
- Separate Sitting Room and Conservatory

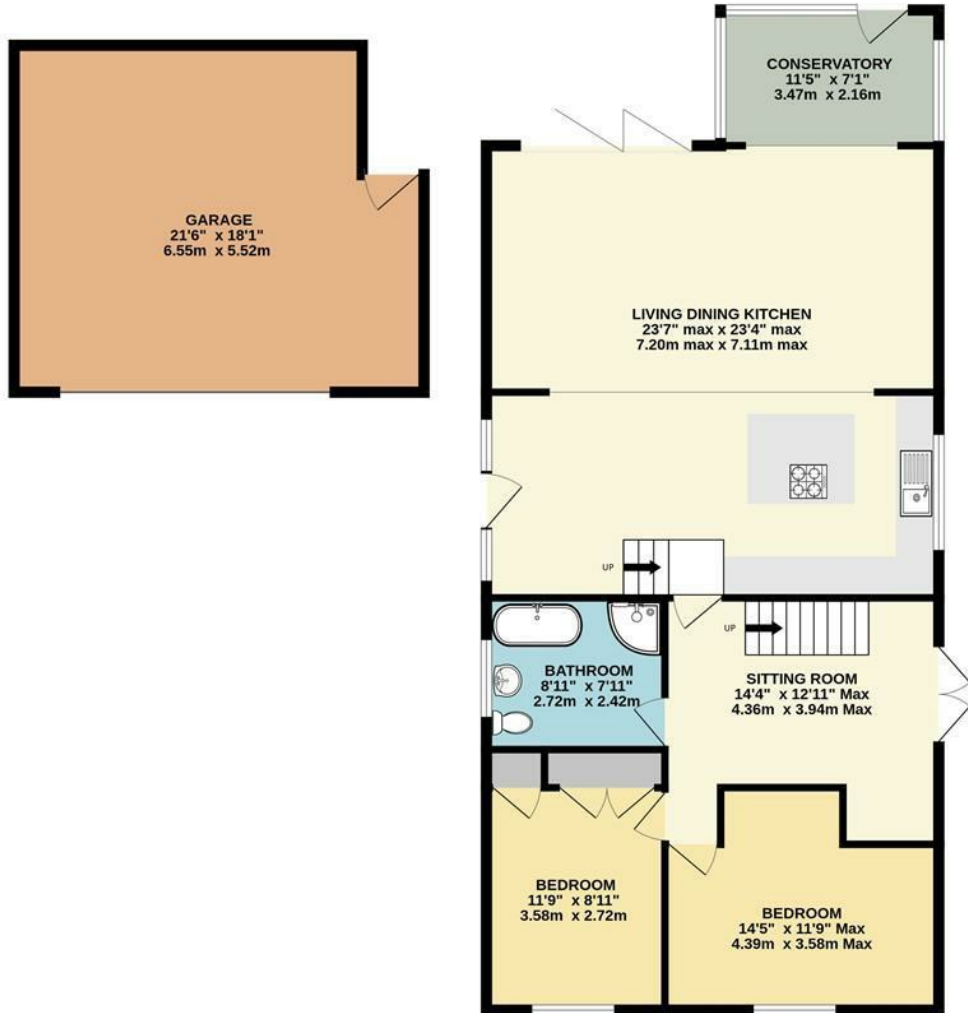
Location, Location, Location!! Standing in a generous, private, plot within a highly sought after area close to Disley Village Centre, a spacious and extended, beautifully presented detached family home. Featuring a stunning 23ft x 23ft open plan living dining kitchen with high level ceilings, underfloor heating and bi-fold doors opening onto a delightful, south facing decked sun terrace. Also comprising: sitting room, conservatory, two ground floor double bedrooms, family bathroom with separate shower, first floor study and master bedroom with en-suite and stunning views. Overlooking open fields with a fantastic, enclosed, private rear garden and plenty of driveway parking leading to double garage with EV charger. Viewing highly recommended.



Disley is situated on the east of Cheshire and is the gateway to the Peak District. It lays claim to the famous National Trust owned Lyme Park which offers the largest house in Cheshire and was used for filming part of Pride and Prejudice. Disley maintains the charming village feel with many amenities including the local infant school, independent shops, public houses and restaurants. Ideally placed on the Manchester Piccadilly to Buxton railway line and the recently completed new relief road to Manchester airport, make the village ideal for the commuter of today. With the High Peak on our doorstep, those wanting the escape to outdoors wont have to travel too far!



GROUND FLOOR
1514 sq.ft. (140.7 sq.m.) approx.

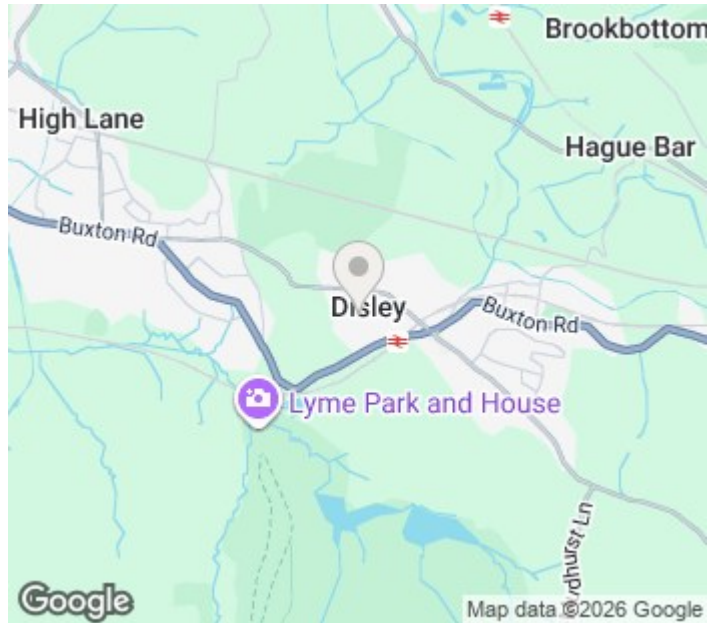


1ST FLOOR
473 sq.ft. (44.0 sq.m.) approx.



TOTAL FLOOR AREA : 1988 sq.ft. (184.7 sq.m.) approx.

Whilst every attempt has been made to ensure the accuracy of the floorplan contained here, measurements of doors, windows, rooms and any other items are approximate and no responsibility is taken for any error, omission or mis-statement. This plan is for illustrative purposes only and should be used as such by any prospective purchaser. The services, systems and appliances shown have not been tested and no guarantee as to their operability or efficiency can be given.
Made with Metropix ©2026



IMPORTANT: we would like to inform prospective purchasers that these sales particulars have been prepared as a general guide only. A detailed survey has not been carried out, nor the services, appliances and fittings tested. Room sizes should not be relied upon for furnishing purposes and are approximate. If floor plans are included, they are for guidance only and illustration purposes only and may not be to scale. If there are any important matters likely to affect your decision to buy, please contact us before viewing the property.