



60, EAST CRAWFORD
STREET, GREENOCK, PA15 2EA





Description

Offering a generous sized family home this three bedroom, two public room SEMI DETACHED VILLA features a spacious enclosed lawned garden with monoblock path and greenhouse. Additional benefits include a floored and lined loft with "Velux", basement accessed by internal stair offering two storage areas plus a further rear cellar reached by an external door at the rear of the property.

Specification includes: double glazing and gas central heating with new double glazing, gas boiler and four piece bathroom suite installed in recent years. Lies close to local amenities, primary schooling and transport facilities.

Impressive apartments comprise: Entrance Vestibule by UPVC double glazed door. The Hallway is reached a by single glazed door. There is a bright front facing Lounge with alcove which features sliding doors leading to the rear facing Dining Room overlooking the garden. An Inner Hall has door giving access to the basement and also leads to the kitchen.

The Kitchen is a bright apartment with windows to the side and rear plus UPVC double glazed door to the garden. There are fitted blue toned units and oak style work surfaces. Appliances include: extractor hood, gas hob and electric oven.

Stairs lead to the Mezzanine Landing with inbuilt cupboard and spacious quality refitted Bathroom featuring a four piece suite including: bath, vanity wash hand basin set within white high gloss unit, wc and double sized shower cubicle. Additional benefits include: partial wooden panelling and heated towel rail.

A short stair leads to the Upper Landing. There are three double sized Bedrooms.

Early viewing is recommended for this family home. EPC = D.

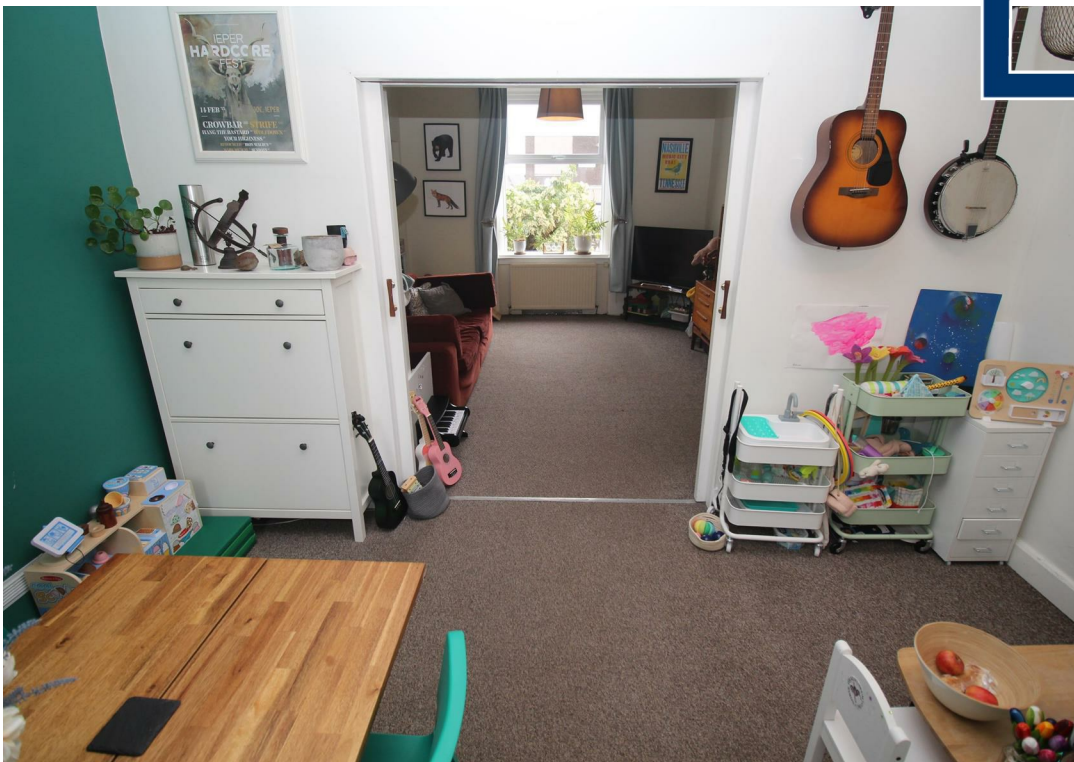
Measurements

Entrance Vestibule
Hallway
Lounge
4.39m x 3.76m (14'5 x 12'4)
Dining Room
3.86m x 2.90m (12'8 x 9'6)
Inner Hall
Kitchen
Mezzanine Landing
Bathroom
Upper Landing
Bedroom 1
3.51m x 2.97m (11'6 x 9'9)
Bedroom 2
2.03m x 3.76m (6'8 x 12'4)
Bedroom 3
2.72m x 2.74m (8'11 x 9'0)
Floored & lined Loft
4.37m x 3.05m (14'4 x 10'0)

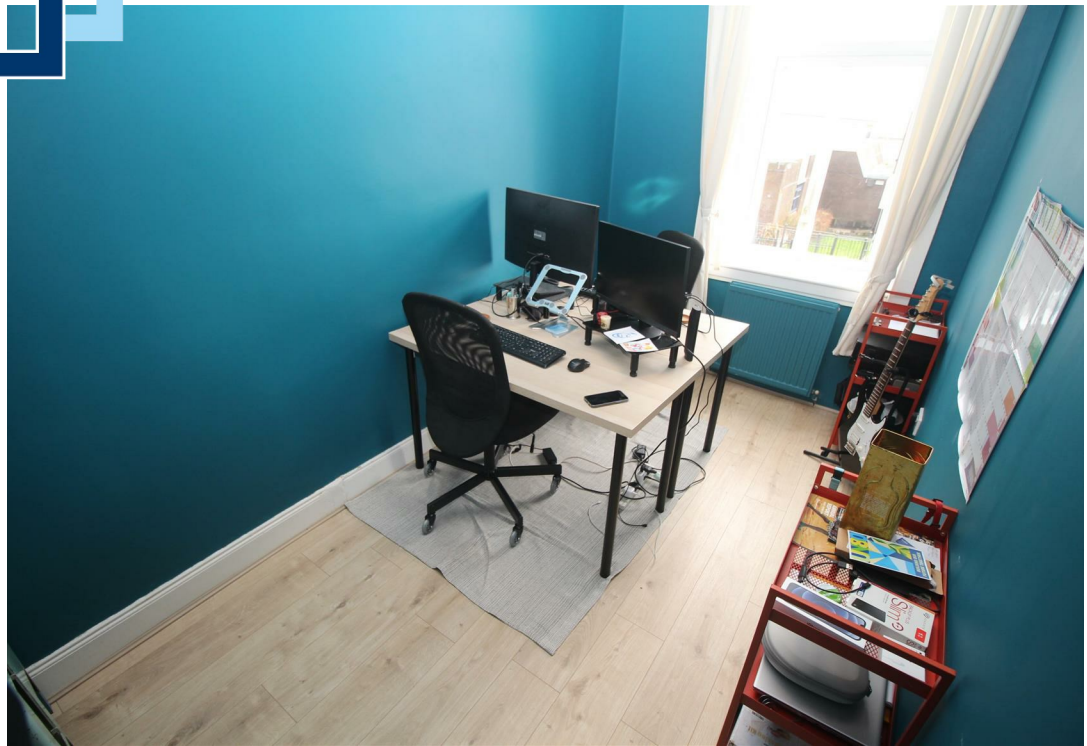


Floorplans are indicative only - not to scale
Produced by Plushplans 











The next step..



To view call 01475 888400. Speak to us 7 days a week until 11pm every day to book your viewing appointment.

House to sell or rent?

Call 01475 888400 to book your free market appraisal.

Require a solicitor?

Ask us to supply a free legal quotation from Neill Clerk & Murray, Solicitors.
www.neillclerkmurray.co.uk

Stay fully up-to-date by following Neill Clerk on:



**60 West Blackhall Street
Greenock
Renfrewshire
PA15 1UY**

t: 01475 888400

e: sales@neillclerk.co.uk

w: www.neillclerk.co.uk



Agents Notes:

These sales particulars are set out as a general outline only, issued in good faith, but do not constitute representations of fact and do not form part of any offer or contract. Any services, equipment, appliances, fittings or central heating systems have not been tested and no warranty is given or implied that these are in working order. All measurements are approximate and for guidance only.

Neither Neill Clerk Estate Agents nor any of its employees or agents has any authority to make or give any representation or warranty whatever in relation to this property.