



Queen's Club Gardens, W14
£825,000

Dexters



Queen's Club Gardens, W14

Situated in the ever popular Queen's Club Gardens a bright and spacious three bedroom apartment.

The property is situated within Gainsborough Mansions on the raised ground floor, offering you excellent natural light and space throughout. The property benefits from a large living room with a bay window, a spacious eat-in kitchen, a modern family bathroom and a separate w.c. This sought after development is extremely popular as you have access to well-maintained communal gardens and tennis courts.

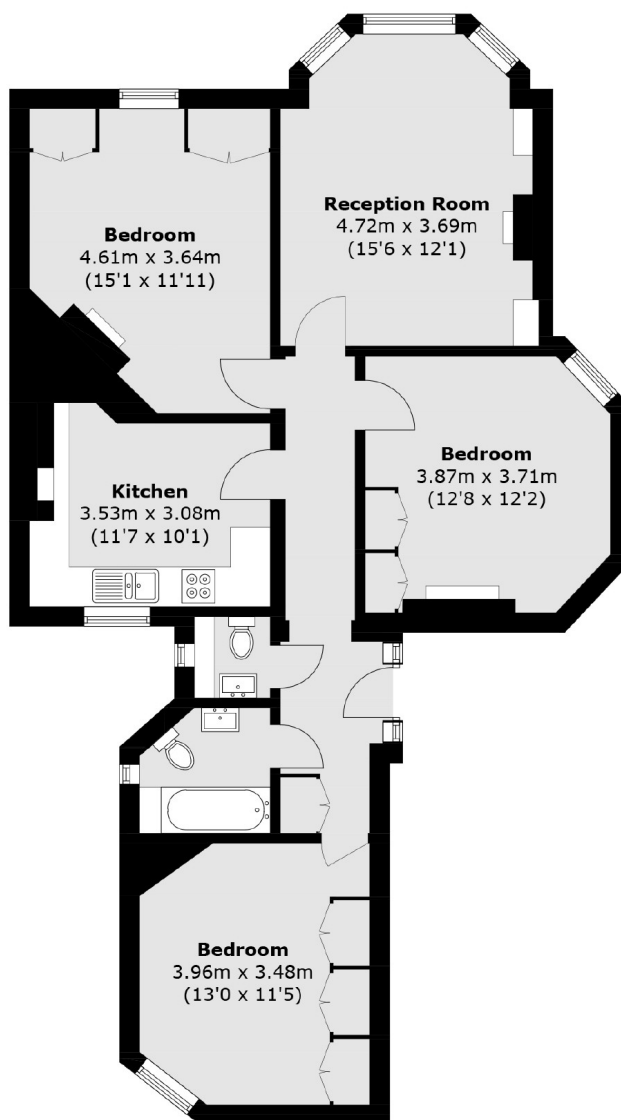
Queen's Club Gardens is located adjacent to the Queen's Club tennis, close to shops, cafes, bars and restaurants and is only a short walk to Barons Court and West Kensington underground stations.

Features

- 999 Year Lease
- No Onward Chain
- Popular Development
- Communal Gardens & Tennis Courts
- Three Bedrooms



Queen's Club Gardens, London, W14



Total area (approx.): 86.7 sq. m (933.2 sq. ft)