



Brady Street, London, E1

BUTLER & STAG



Modern and spacious one bedroom apartment set in a vibrant Whitechapel location.



- One Bedroom Apartment
- Own Private Entrance
- Ultra Convenient Whitechapel Location
- Furnished
- Modern and Spacious
- Direct Access to Communal Gardens
- Moments from Whitechapel Station
- Available from 7th February 2026

Situated within a popular and secure development, this property defines convenience, being just moments from Whitechapel station and a wealth of local amenities, including a large supermarket and the eclectic street market. The City, Shoreditch and historic central London are all within touching distance.

The apartment itself enjoys its own private entrance and features a spacious open-plan kitchen / living area, large contemporary bathroom and a generously-proportioned double bedroom with direct access out to well-maintained communal gardens.

Perfectly suited to a single professional or a couple, this property is offered furnished and is available from 7th February 2026.

EPC Rating C
Council Tax Band C

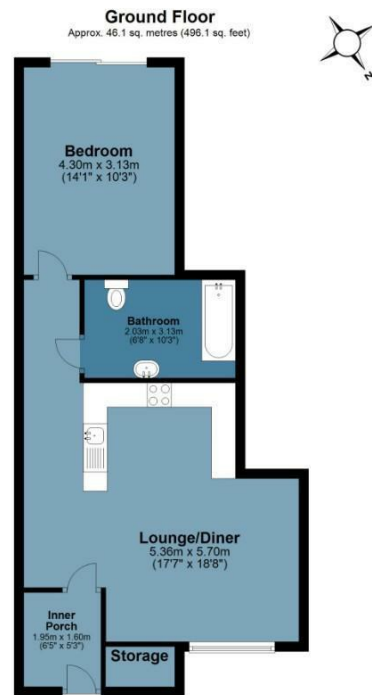




Brady Street

Approx. Gross Internal Area 46.1 Sq M (496.1 Sq Ft)

BUTLER & STAG



Floor plan is for illustrative purposes only and is not to scale. Every attempt has been made to ensure the accuracy of the floor plan shown, however all measurements, fixtures, fittings and data shown are an approximate interpretation for illustrative purposes only.

IMPORTANT NOTICE - These particulars have been prepared in good faith and they are not intended to constitute part of an offer or contract. We have not performed a structural survey on this property and the services, appliances and specific fittings have not been tested. All photographs, measurements, floor plans and distances referred to are given as a guide and should not be relied upon.

BUTLER & STAG

☎ 020 8102 1236

🏠 508 Roman Road, Bow, London, E3 5LU

✉ bow@butlerandstag.com

www.butlerandstag.uk