

Landor Road, SW9

£425,000

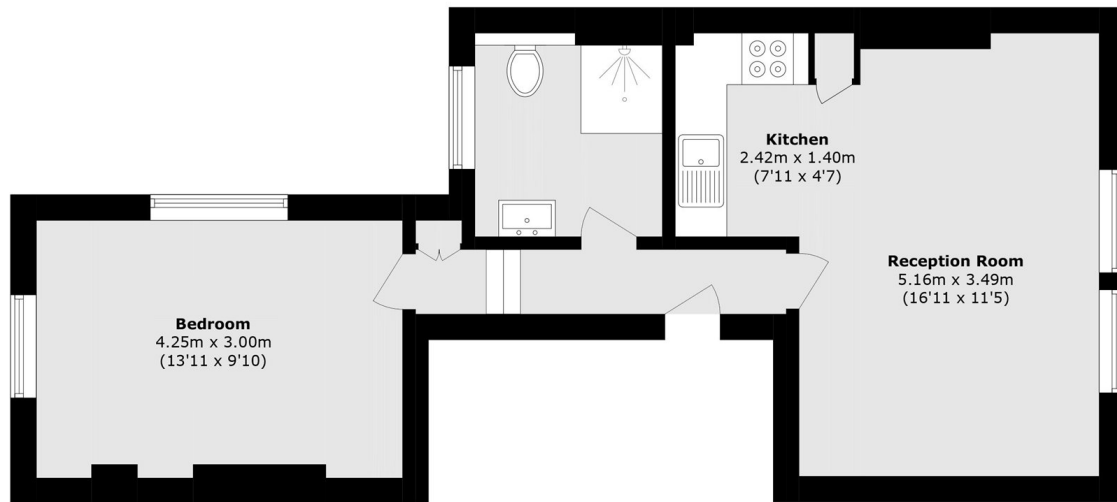
An exceptionally well presented one double bedroom first-floor apartment set within a charming Victorian building. The accommodation comprises a bright and spacious open plan kitchen/reception room with ample space for dining, a modern bathroom, and a generous double bedroom with built in storage.

Landor Road is located moments from the shops, restaurants and bars of Clapham High Street, with excellent transport links into central London from Clapham North and Brixton stations.

Features

- Open Plan Kitchen
- Excellent Condition
- Convenient Location
- Period Features
- One Double Bedroom
- First Floor Apartment

Landor Road, London, SW9



Total area (approx.): 44.0 sq. m (473.6 sq. ft)