



Coldershaw Road, W13

£461 Per week

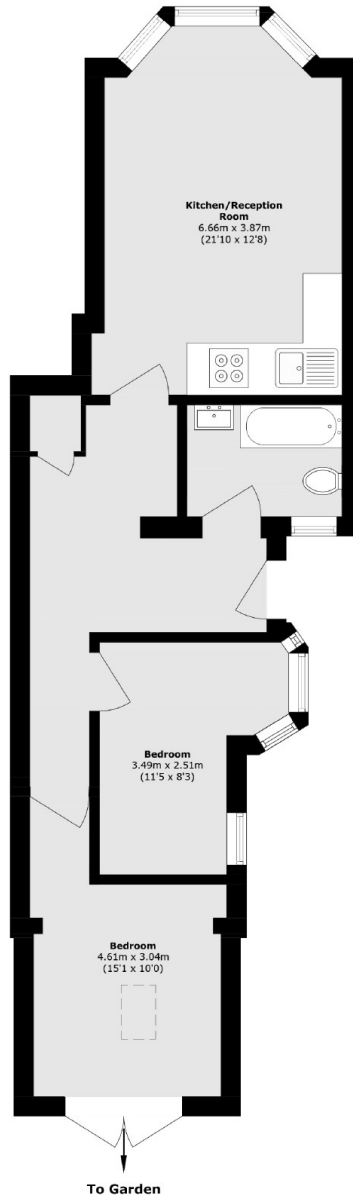
This large two double bedroom apartment is in excellent condition and offers two double bedrooms, a spacious open-plan reception and private garden.

Well located, just under a mile away from West Ealing station and also just over a mile from Northfields station. Also ideally located for the local parks and shopping facilities of West Ealing's Broadway.

Features

- Two Double Bedrooms
- Ground Floor
- Private Garden
- Open-Plan Kitchen
- Semi Detached
- Modern Bathroom

Coldershaw Road, London, W13



Total area (approx.): 58.3 sq. m (627.5 sq. ft)