

FREEHOLD



House - Semi-Detached

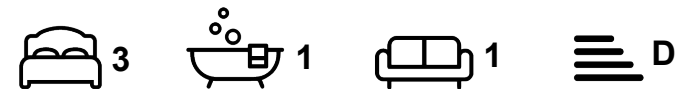
MOOR VIEW ROAD, SHEFFIELD, S8

Asking price

£275,000

FEATURES

- Immaculately presented three-bedroom semi-detached home
- Bright open-plan kitchen diner opening onto the garden
- Beautifully maintained rear garden with patio seating area
- Private driveway providing off-road parking




HIGHGATES
SALES & LETTINGS

3 Bedroom House - Semi-Detached located in Sheffield

A beautifully presented three-bedroom semi-detached home that gets the fundamentals exactly right. Well balanced, filled with natural light and offering practical family living throughout, this is the kind of house that's proving increasingly difficult to find.

For many buyers, the appeal is immediate. There's nothing demanding attention, no renovation project waiting in the wings and no compromises to make. It's simply a house that's been well cared for and thoughtfully updated, ready to be enjoyed from day one.

At the heart of the home is the open-plan kitchen diner, a space designed around the way people live today. Bright, sociable and effortlessly practical, it connects directly to the rear garden, allowing the whole ground floor to flow naturally between inside and out. Whether it's family life during the week or friends gathered on a summer evening, the layout just works.

Outside, the garden feels like a natural extension of the house. Beautifully maintained and easy to enjoy, it provides a private, inviting setting without becoming another weekend project. Driveway parking to the front is another significant advantage, an increasingly valuable feature in this part of Sheffield.

Call us on

0114 312 4994

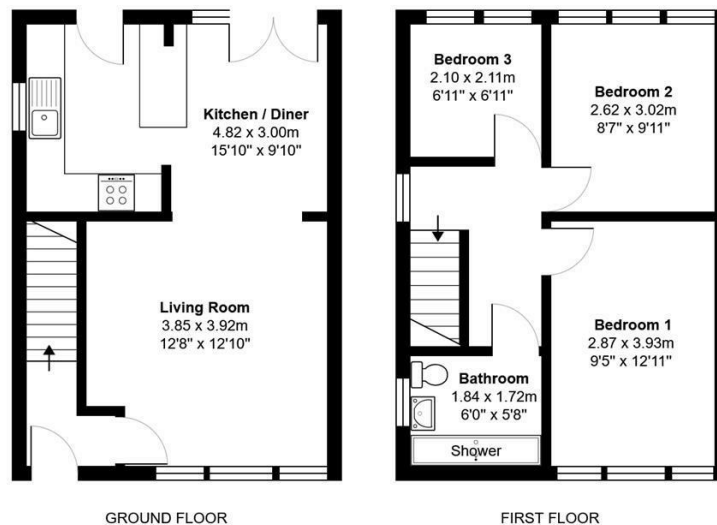
info@highgatesstates.co.uk

www.highgatesstates.co.uk

Council Tax Band

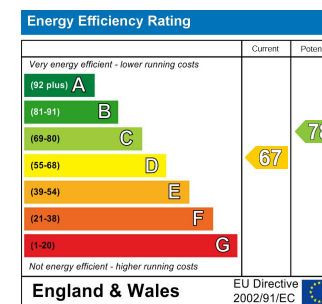
B

Moor View Road, SHEFFIELD, S8



Total Area: 68.7 m² ... 739 ft²

All measurements are approximate and for display purposes only



Agents Note: Whilst every care has been taken to prepare these particulars, they are for guidance purposes only. All measurements are approximate and are for general guidance purposes only and whilst every care has been taken to ensure their accuracy, they should not be relied upon and potential buyers are advised to recheck the measurements.