



**POOLE
TOWNSEND**

Park Road, Swarthmoor

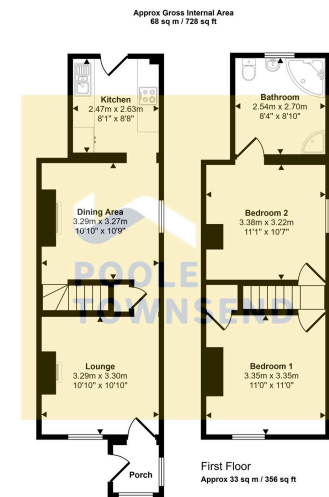
£159,000

🛏️ 2 🚿 1 🚗 2



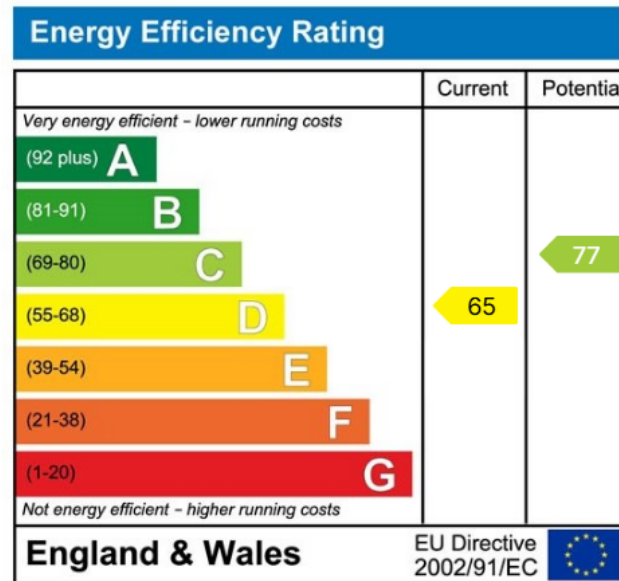
- End Terrace Home with Generous Proportions
- Two Large Double Bedrooms
- Low Maintenance Rear Patio With Large Outbuilding
- Views To The Front
- Freehold
- Lounge and Separate Dining Room
- Large Bathroom
- Walking Distance To Ulverston Town Centre
- Council Tax Band A
- Roof Recently Replaced





This floorplan is only for illustrative purposes and is not to scale. Measurements of rooms, doors, windows, and any items are approximate and no responsibility is taken for any error, omission or mis-statement. Items of items such as bathroom suites are representations only and may not look like the real items. Made with Made Snippy 360.

Situated in the popular village of Swarthmoor, this modernised and upgraded two-bedroom property on Park Road offers tastefully finished accommodation. Boasting two reception rooms, a smartly presented kitchen, and an enclosed patio-style garden with large outbuilding, this home provides comfortable and stylish living.



Visit us at
www.pooletownsend.co.uk
enquiries@pooletownsend.co.uk

We are open
 Monday – Friday 9.00 – 5.00
 Saturday 9.00 – 1.00

Barrow 01229 811811
 Ulverston 01229 588111
 Grange 015395 33316
 Kendal 01539 734455
 Milnthorpe 015395 62044