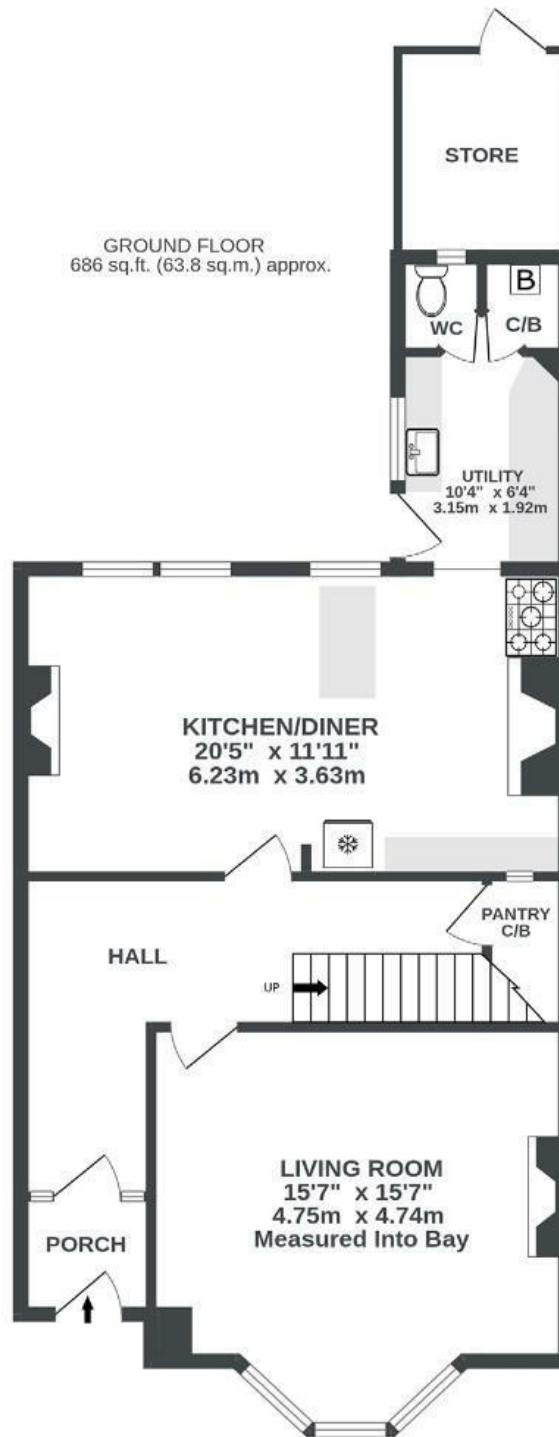


# Fishponds Road

EASTVILLE

APPROXIMATE FLOOR AREA  
118.7 SQM / 1277 SQFT



Illustrations are for reference purposes only, measurements are approximate, not to scale.

Boardwalk

# Fishponds Road

EASTVILLE, BRISTOL



£425,000



4 Bedrooms



BS5 6SF



2 Bathrooms

*"I will always have such fond memories of this house - I've loved hosting big dinner parties which overflow into the garden, the kitchen has been the heart of this home"*

