



Rosebery Avenue, EC1R
£960,000

Dexters



Rosebery Avenue, EC1R

A recently refurbished two bedroom apartment in the famous New River Head development on Rosebery Avenue. This lovely home comes with off street parking, stunning communal gardens, a communal gym and use of the exquisite Oak Room.

This Edwardian building formerly used as the London Metropolitan Water Board Headquarters sits within beautifully manicured gardens.

New River Head is located in the heart of London's Clerkenwell neighbourhood, with Angel Station on the Northern Line just 0.3 miles away and the vibrant Exmouth Market with its bars and restaurants even closer. Additionally, both the City and West End are within easy reach.

Features

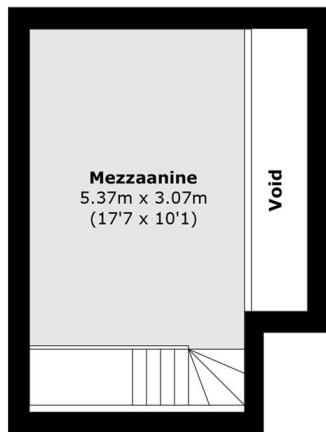
- Two Bedrooms
- Recently Refurbished
- Concierge
- Gym
- Off Street Parking
- Manicured Gardens



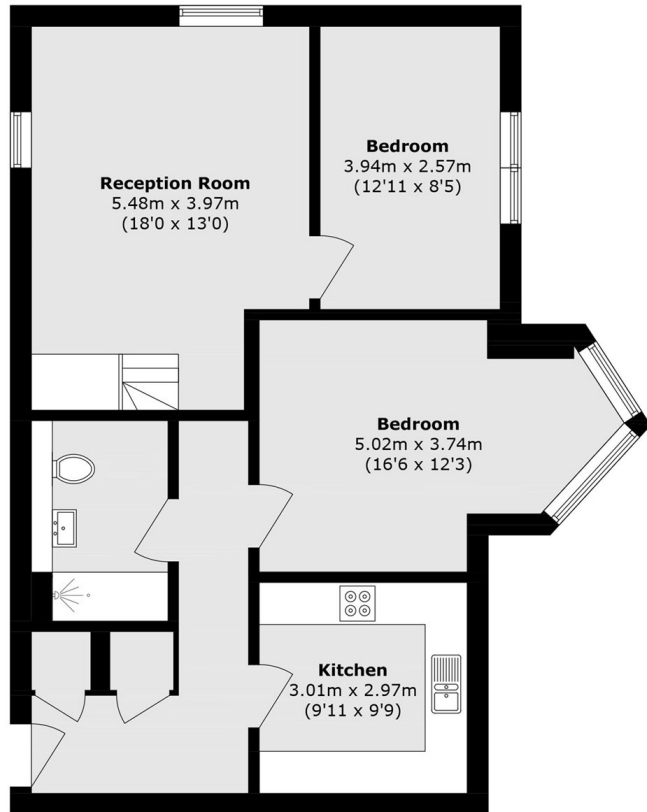




Rosebery Avenue, London, EC1R



Mezzanine Floor



Ground Floor

Total area (approx.): 81.1 sq. m (872.9 sq. ft)
(Excluding Void)