



Walton Drive, Choppington, NE62 5EG

£60,000

**Harpers** | POWERED BY **exp**™ UK  
property people

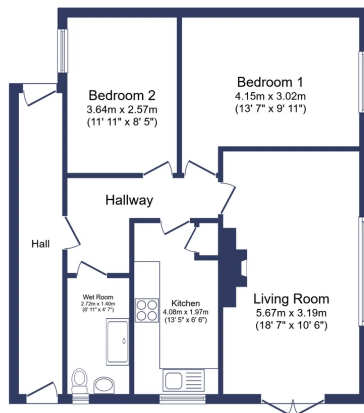
**Bedrooms: 2 | Bathrooms: 1 | Receptions: 1**

Discover the potential of this spacious two-bedroom ground floor maisonette, conveniently situated on a corner plot within a desirable residential area. This property offers a fantastic opportunity to personalise and create a home tailored to your tastes. You enter via your own private entrance and internal access hall. From there, there is a bright reception space boasting direct access to the garden, creating a seamless indoor-outdoor flow. The accommodation features two comfortable double bedrooms, a practical wet room and a galley-style kitchen, ready for your modernising touch. Outside, the property benefits from its own front garden and convenient on-street parking. With 731 sqft of living space, this home provides a comfortable foundation for a new beginning. Offered with no onward chain, this property is ready for its next chapter, allowing you to add your unique stamp throughout.

- Ground Floor Maisonette
- Two Double Bedrooms
- Wet Room
- Spacious Living Room With Direct Garden Access
- Galley-Style Kitchen
- Own Front Garden
- Private Entrance & Internal Access Hall
- Add Your Own Stamp
- No Onward Chain
- Great Residential Location







**Floor Plan**  
Floor area 67.9 sq.m. (731 sq.ft.)

Total floor area: 67.9 sq.m. (731 sq.ft.)

This floor plan is for illustrative purposes only. It is not drawn to scale. Any measurements, floor areas (including any total floor area), openings and orientations are approximate. No details are guaranteed, they cannot be relied upon for any purpose and do not form any part of any agreement. No liability is taken for any error, omission or misstatement. A party must rely upon its own inspection(s). Powered by [www.propertybox.co](http://www.propertybox.co)



## Harpers Property People

80 Windsor Gardens, Bedlington, NE22 5SY

07813 673 606

ali@harpersproperty.com

<https://harpersproperty.com>

