



Greenfell Mansions, SE8

£325,000

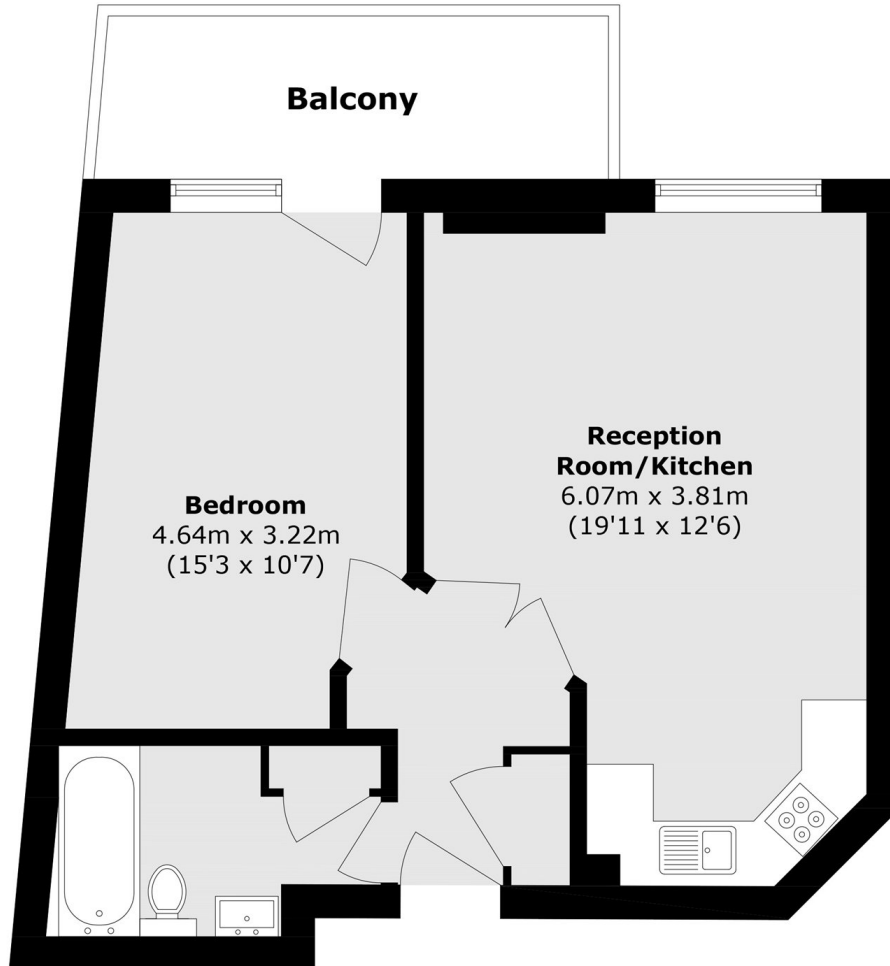
A well presented one bedroom flat which benefits from a spacious open-plan living-dining area and large balcony, providing plenty of natural light throughout the day. The property further benefits from being offered chain-free.

Excellently located just minutes away from Greenwich DLR and overground stations that take you into London Bridge, Cannon Street and Canary Wharf in a matter of minutes. There are also plenty of restaurants, bars and shops located a short walk away along the river. Situated on the Thames river path, taking you through Greenwich past the Cutty Sark and onto the o2 .

Features

Riverside Development
Video-Entry With On-Site
Porter
Resident And Visitor Permit
Parking Within Grounds.
Well Kept Communal Gardens.
South-Facing Balcony

Greenfell Mansions, London, SE8



Total area (approx.): 43.5 sq. m (468.2 sq. ft)
Balcony area (approx.): 7.5 sq. m (80.7 sq. ft)