

12 St. Marys Way,

Guide Price £500,000

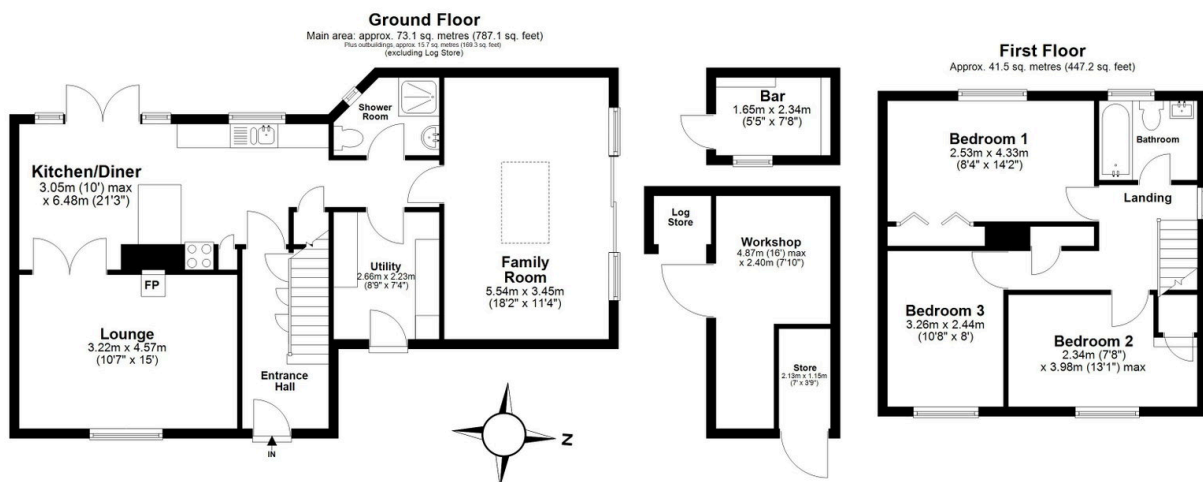


Mary's Way, Baldock, Hertfordshire, SG7 6JF

Set within a popular and well-established residential area of Baldock, this beautifully extended three-bedroom family home occupies an impressive corner plot and offers over 1,230 sq. ft. of versatile living accommodation, ideal for growing families and commuters alike.

Key Features

- Extended three-bedroom family home
- Large rear extension completed in 2021
- Approx. 1,234 sq. ft. of accommodation
- Generous wrap-around corner plot
- Spacious kitchen/diner and separate lounge
- Impressive 18ft family room
- Ground-floor utility room and shower room
- Detached workshop, bar area and log store
- Close to highly regarded schools and local amenities
- Excellent commuter links via A1(M) and Baldock station



Main area: Approx. 114.7 sq. metres (1234.4 sq. feet)
Plus outbuildings, approx. 15.7 sq. metres (169.3 sq. feet)

Every attempt has been made to ensure the accuracy of this floor plan, however no responsibility is taken for errors, omissions or mis-measurements. This plan is for illustrative purposes and is a guideline only and should be used as such by any prospective purchaser.
Copyright 2025 - RobSpicerPhoto.com
Plan produced using PlanUp.