

Barley Lane, Hastings TN35 5NU

Offers in excess of £300,000



3



1



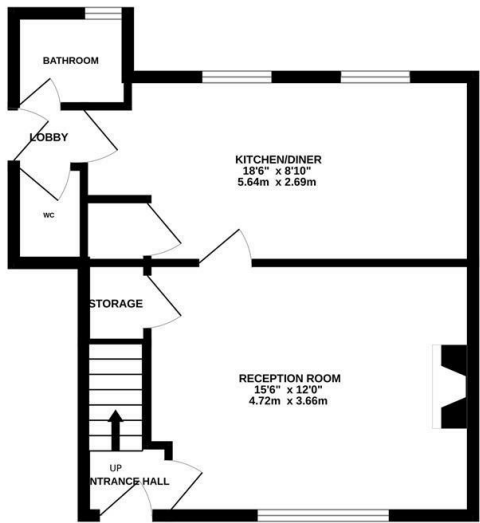
1



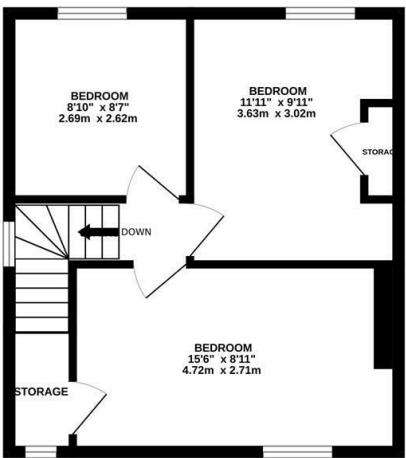
D

A charming three bedroom SEMI-DETACHED HOUSE with OFF ROAD PARKING set in an unrivalled location ADJACENT TO HASTINGS COUNTRY PARK and the East Hill. It's enviably placed just a leisurely stroll from Hastings Old Town where there are a range of independent stores, pubs and eateries along with the seafront and beach. The accommodation here is arranged as a bright living room which is positioned at the front of the property and benefits from a BUILT-IN STORAGE CUPBOARD while the EAT-IN KITCHEN is separate offering ample storage and plenty of room for a dining table to create the ideal sociable setting. There is also a family bathroom on this floor together with a separate W/C. The first floor houses three bedrooms, two of which are double rooms with the principal bedroom enjoying a GENEROUS STORAGE SPACE. Externally, the enclosed rear garden offers multiple areas of patio, perfect for DINING AL-FRESCO followed by an expanse of lawn bordered by mature shrubs and trees, while to the front of the property there are tiers of garden and a DRIVEWAY. Being sold with NO ONWARD CHAIN, this fantastic property would make the PERFECT FAMILY HOME and is not to be missed.

GROUND FLOOR
425 sq.ft. (39.5 sq.m.) approx.



1ST FLOOR
381 sq.ft. (35.4 sq.m.) approx.



TOTAL FLOOR AREA : 806 sq.ft. (74.8 sq.m.) approx.

Whilst every attempt has been made to ensure the accuracy of the floorplan contained here, measurements of doors, windows, rooms and any other items are approximate and no responsibility is taken for any error, omission or mis-statement. This plan is for illustrative purposes only and should be used as such by any prospective purchaser. The services, systems and appliances shown have not been tested and no guarantee as to their operability or efficiency can be given.

Made with Metropix ©2025

