

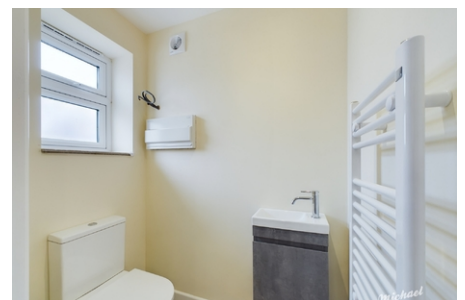
**11 Newman Close,
 Aylesbury, Buckinghamshire**

£1,650 PCM



****Available with a Zero Deposit Guarantee****

Michael Anthony Aylesbury Lettings are pleased to present to the market this brand new three bedroom semi-detached home. The property is situated in an exclusive cul-de-sac location comprising, entrance hallway, cloakroom WC, kitchen/diner with fitted appliances, a lounge, three bedrooms and family bathroom. The property also benefits from double glazing, solar panels, heat source pump heating, EV car charging point, generous garage, block paved driveway parking for 2 vehicles, enclosed turfed rear garden with patio.



- ****Available Zero Deposit Guarantee****
- **UNFURNISHED**
- **NEW BUILD**

- **3 BED SEMI-DETACHED**
- **KITCHEN WITH APPLIANCES**
- **LIVING ROOM**