



Hampstead Way, Hampstead Garden Suburb, NW11
Freehold
£1,799,500



800 Finchley Road, Hampstead Garden Suburb, London, NW11 7TJ
020 8458 5000
sales@litchfields.com
www.litchfields.com

Offices also in Highgate



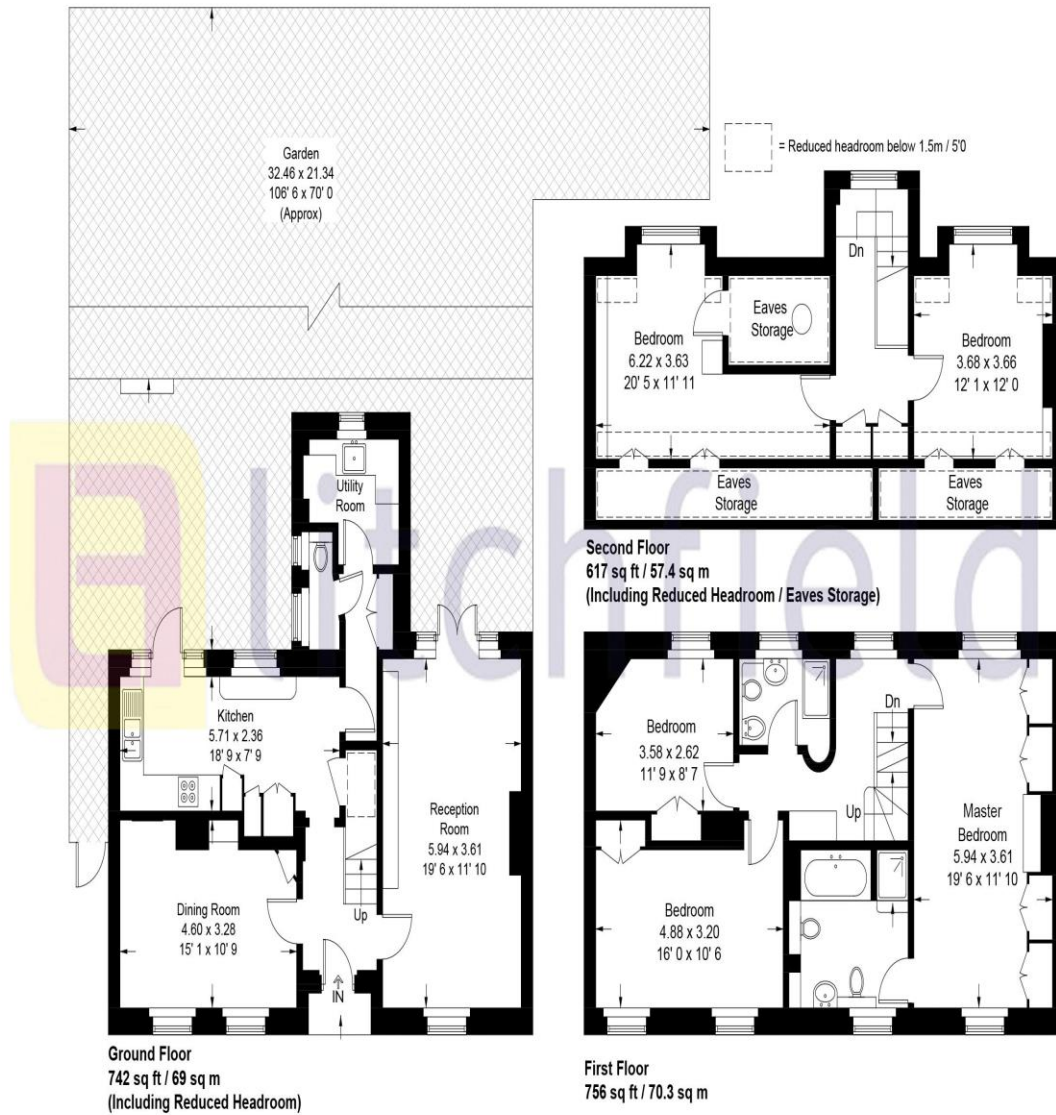
A superb character five bedroom Grade II Listed double fronted link terraced family home, placed in this stunning picturesque and quiet square on Hampstead Way. Close to the extensive shops, boutiques, supermarkets, cafes & restaurants of Temple Fortune and a short walk to the Heath Extension. This exceptional home features a very large garden to the rear, ideal for children to play in and has the added benefit of a parking space to the front of the house. Viewing of this distinguished property is highly recommended.



Character Link Terraced Family Home in quiet garden square | Five Bedrooms | Two Receptions | Two Bathrooms (1 en-suite) | Fitted Kitchen | Guest Cloakroom & Utility Room | Wood floors to ground floor | Short walk amenities & buses on Temple Fortune | Parking space | Stunning and large rear garden | EPC-D

Hampstead Way

Approximate Gross Internal Area = 1879 sq ft / 174.8 sq m
 (Excluding Reduced Headroom / Eaves Storage)
 Reduced Headroom / Eaves Storage = 236 sq ft / 21.9 sq m
 Total = 2115 sq ft / 196.7 sq m



Not to scale, for guidance only and must not be relied upon as a statement of fact
 All measurements and areas are approximate only and have been prepared in
 accordance with the current edition of the RICS Code of Measuring Practice

For similar properties please visit our website www.litchfields.com

Or call us on 020 8458 5000