



TO LET

Eleanor Way, Waltham Cross
£2,000 pcm + security deposit

****Spacious 3 / 4 Bedroom Apartment with Balcony in Waltham Cross – Eleanor Way****

- **Apartment - Unfurnished**
- **3 Beds + 2 Receptions**
- **1 Bathroom**
- **Energy Rating: D**
- **Council Tax Band C**
- **Accessibility: Lift**
- **Communal Parking**
- **Balcony**



£2,000 pcm +
security deposit

Eleanor Way,
Waltham Cross,
Herts
EN8 7SH

****Spacious 3 / 4 Bedroom
Apartment with Balcony in
Waltham Cross – Eleanor Way****

Located in a sought-after area of Waltham Cross, this unfurnished three / four bedroom apartment offers a comfortable and versatile living space, ideal for families or professionals.

Featuring a generous reception room, the property provides ample space for both relaxing and entertaining. Leading onto a private balcony where you can enjoy fresh air and views of the surrounding area. The well-proportioned kitchen complements the layout with separate dining space.

The accommodation is versatile which includes three good-sized bedrooms and a further room from the lounge which can be used as a Study/Playroom or fourth bedroom. Modern fitted bathroom, all finished to a practical standard. Benefiting

>> Key Features

- Apartment - Unfurnished
- 3 Beds + 2 Receptions
- 1 Bathroom
- Energy Rating : D
- Council Tax Band C
- Accessibility: Lift
- Communal Parking
- Balcony

£2,000 pcm +
security deposit

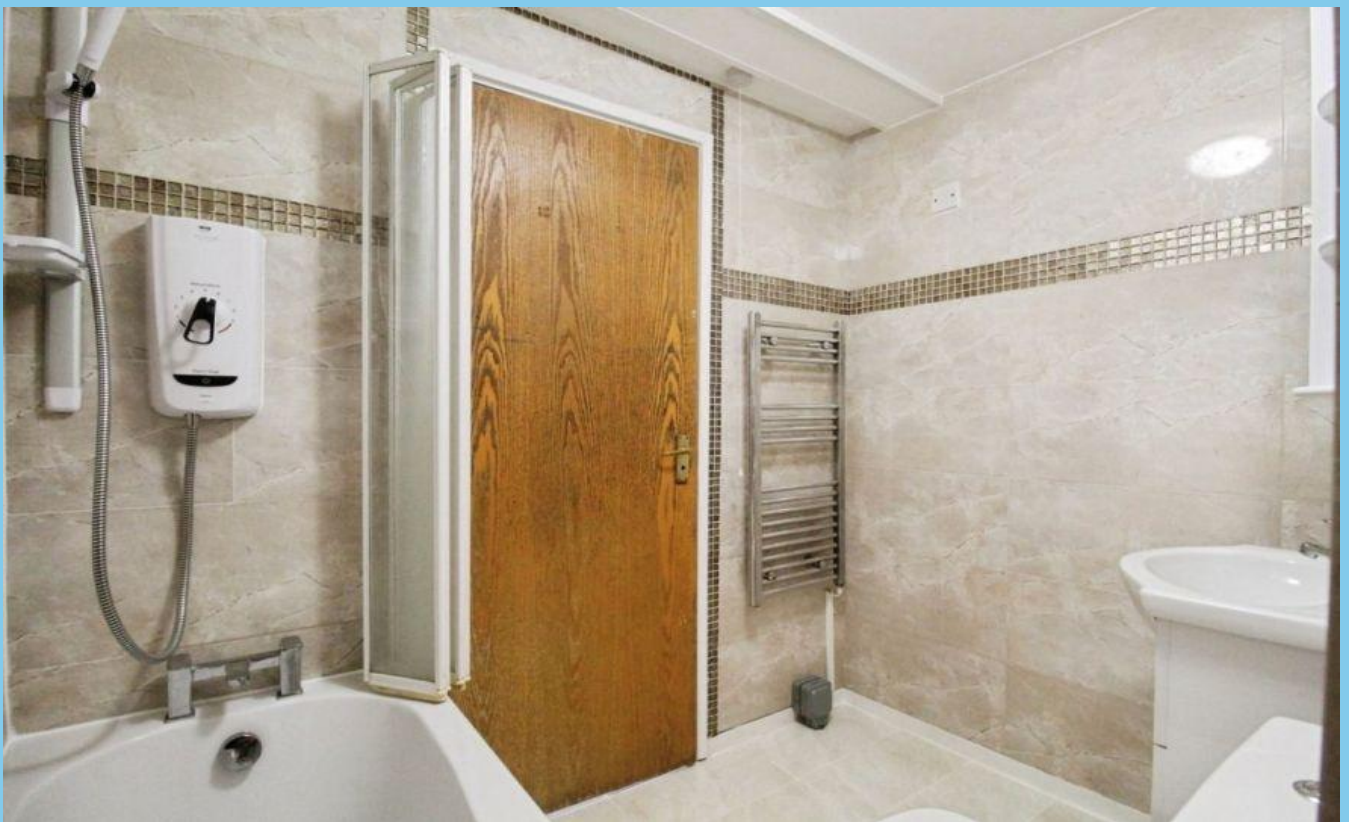
from an Energy Rating of D, the apartment promises reasonable energy efficiency.

Residents have convenient access to communal parking and the building is served by a lift, ensuring ease of access for all. Situated in Council Tax Band C, the property presents excellent value within a well-connected neighbourhood.

Don't miss this opportunity to secure a versatile apartment in Eleanor Way – get in touch to arrange a viewing today.







Directions



Certificate Number : 0255-0214-3904-1005-8804

Score	Energy rating	Current	Potential
92+	A		
81-91	B		
69-80	C		77
55-68	D	66	
39-54	E		
21-38	F		
1-20	G		

<https://find-energy-certificate.digital.communities.gov.uk/energy-certificate/0255-0214-3904-1005-8804>