



UPPER TOOTING ROAD, SW17

£500,000

Two Double Bedrooms

Tooting Bec

Split Level

Fitted Kitchen

894 sq.ft

EPC: C

ABOUT THE PROPERTY

A very spacious two double bedroom flat located in Tooting Bec.

This split level property benefits from having its own private entrance. On the first floor, you are presented with a large kitchen with double glazed windows providing natural light throughout. You are then welcomed with a separate reception room. The second floor holds two double bedroom as well as a generous family bathroom and a separate W/C.

The property is located on Upper Tooting Road just moments from the Underground station providing access to the Northern line (zone 3) and the plentiful amenities

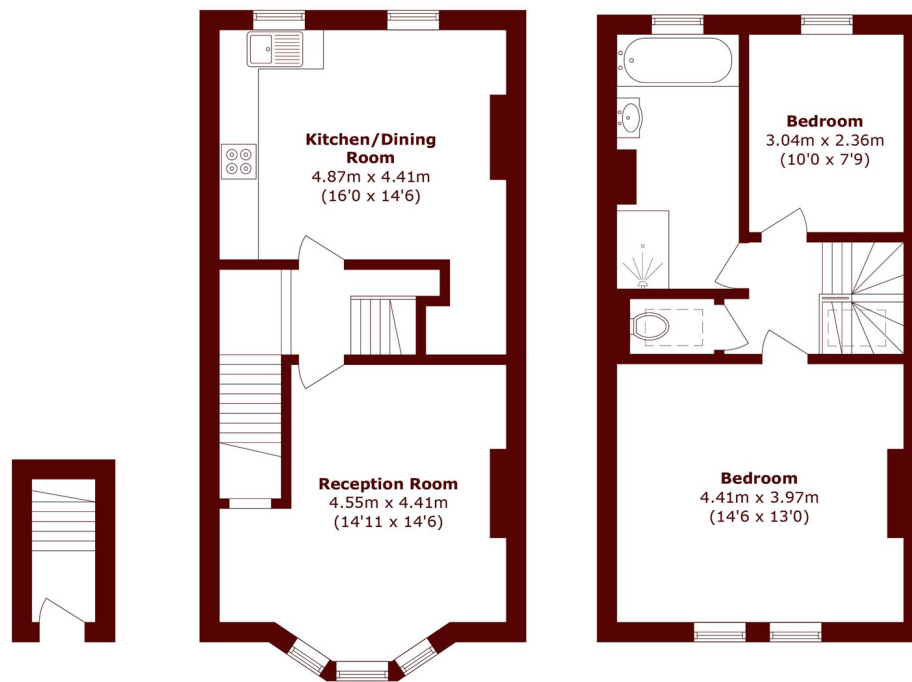








STEP INSIDE UPPER TOOTING ROAD



Ground Floor

First Floor

Second Floor

Total area (approx.): 83.1 sq. m (894.4 sq. ft)

Tooting
020 8767 3655

Energy Rating: C We aim to make our particulars both accurate and reliable. However, they are not guaranteed; nor do they form part of an offer or contract. If you require clarification on any points then please contact us, especially if you're traveling some distance to view. Please note that appliances and heating systems have not been tested and therefore no warranties can be given as to their good working order

**MARSH &
PARSONS**