



11 Swan Court, Askern , Doncaster, DN6 0QT

Offered to the market with no onward chain, this three-storey, three-bedroom town house is situated in a popular residential location, conveniently close to all local amenities.

The accommodation is arranged over three floors and comprises a ground floor W/C, and a well-proportioned lounge room providing comfortable living space. To the rear, the property benefits from access to an enclosed rear garden, ideal for outdoor dining and low-maintenance enjoyment.

The first floor offers two bedrooms along with a family bathroom, while the second floor is dedicated to the master bedroom, which further benefits from a useful storage cupboard, creating a private and versatile principal suite.

Externally, the property includes allocated parking for two vehicles. Additional benefits include Council Tax Band B and an EPC rating to follow.

This property would make an ideal purchase for first-time buyers, families, or investors, and early viewing is recommended to appreciate the space and layout on offer.

Offers in the region of £160,000

11 Swan Court, Askern , Doncaster, DN6 0QT



- Three-bedroom three-storey town house
- No onward chain
- Master bedroom on the second floor with storage cupboard
- Two further bedrooms on the first floor
- Family bathroom to the first floor
- Ground floor W/C
- Enclosed rear garden
- Allocated parking for two vehicles
- Popular residential location close to local amenities
- Council tax band: A & EPC rating: C

Lounge/Diner

13'4" x 15'3" (4.08 x 4.66)

Bedroom 3

13'4" x 9'0" (4.08 x 2.76)

Kitchen

9'8" x 9'10" (2.97 x 3.01)

W/C

3'3" x 5'8" (1.00 x 1.74)

Storage room

3'1" x 3'0" (0.96 x 0.92)

Bathroom

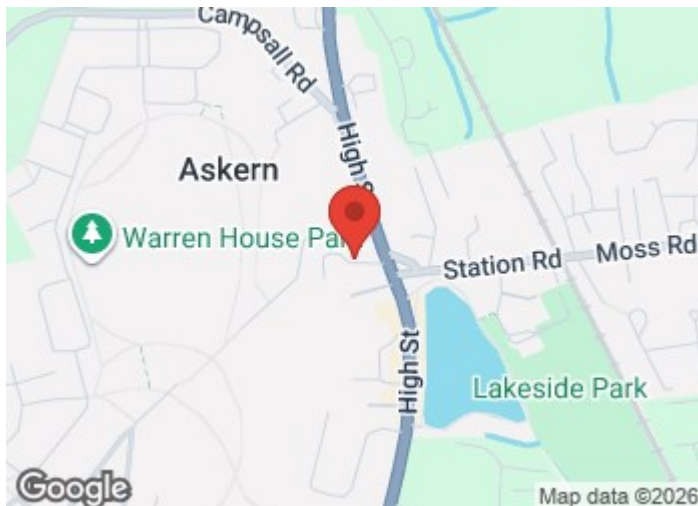
6'4" x 6'7" (1.95 x 2.03)

Master bedroom

9'7" x 20'11" (2.93 x 6.38)

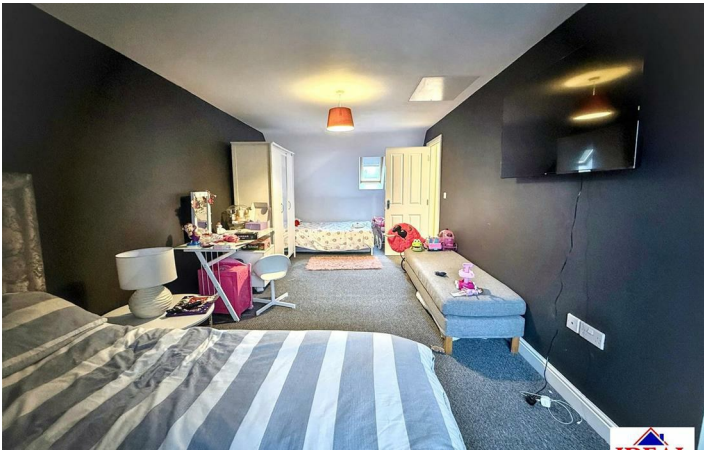
Bedroom 2

13'7" x 7'6" (4.15 x 2.30)



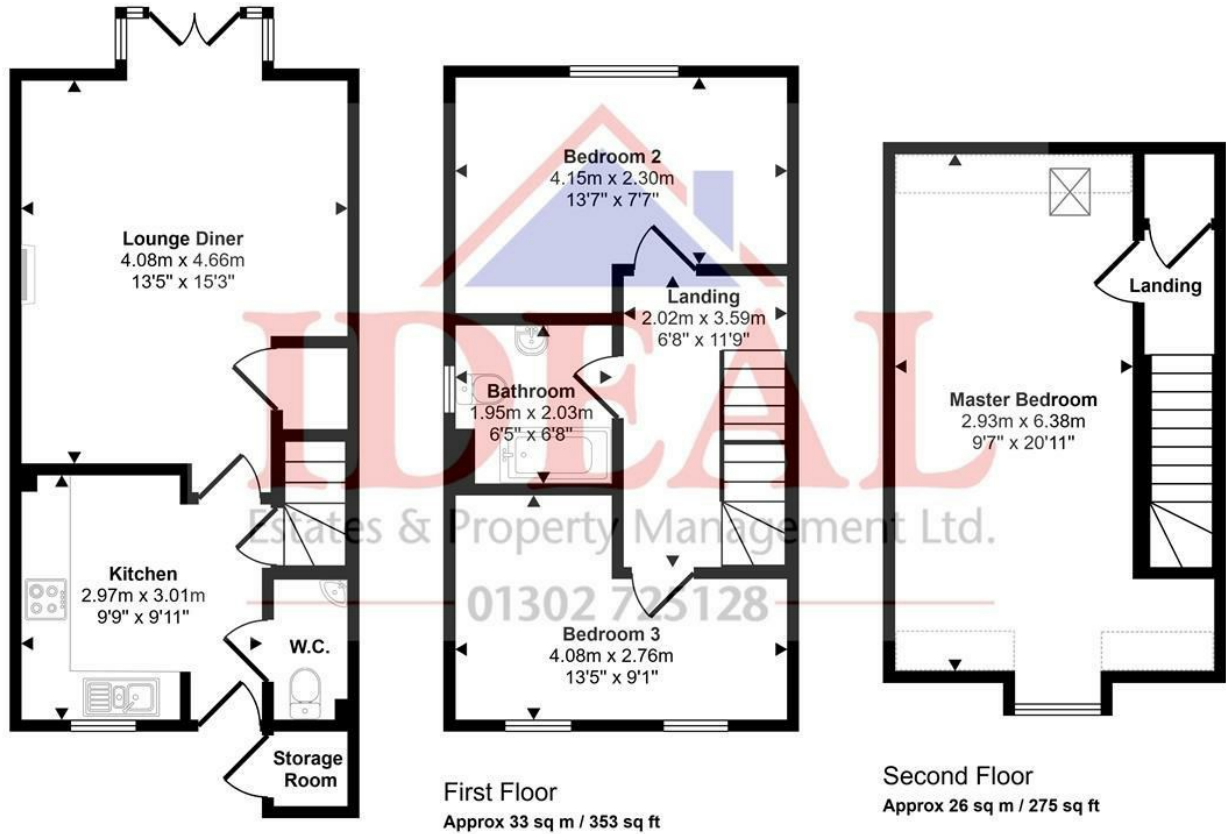
Directions

The village lies 9 miles (14 km) south of Pontefract, and 7 miles (11 km) north of Doncaster. The village offers an array of local amenities, schools, doctors and supermarket. The focal point is Askern lake, offering a lovely walk and cafe stop.



Floor Plan

Approx Gross Internal Area
93 sq m / 996 sq ft



Ground Floor
Approx 34 sq m / 369 sq ft

Denotes head height below 1.5m

This floorplan is only for illustrative purposes and is not to scale. Measurements of rooms, doors, windows, and any items are approximate and no responsibility is taken for any error, omission or mis-statement. Icons of items such as bathroom suites are representations only and may not look like the real items. Made with Made Snappy 360.

These particulars, whilst believed to be accurate are set out as a general outline only for guidance and do not constitute any part of an offer or contract. Intending purchasers should not rely on them as statements of representation of fact, but must satisfy themselves by inspection or otherwise as to their accuracy. No person in this firm's employment has the authority to make or give any representation or warranty in respect of the property.

